

TAG SALE OF CHAMPIONS

MARCH 25 & 26, KAUKAUNA, WI



Supreme Champion \$1,500.00
Pay to the order of: One Thousand Five Hundred and 00/100 Dollars
World Dairy Expo 2015
BoMatic Robotics

HONDA
Pay to the Order of: Reserve Supreme Champion
In the Amount of: One Thousand and 00/100 Dollars
\$1,000.00
Date: (02)Mar 6, 2015
World Dairy Expo 2015

**2016 TAG
EVENT
MARCH 25 & 26
milksource.com**

SCHEDULE OF EVENTS

THURSDAY, MARCH 24

Cattle Viewing All Day

FRIDAY, MARCH 25

Cattle Viewing All Day

Tag Sale & Grilled Cheese Social 4-9 PM

SATURDAY, MARCH 26

Tag Sale Resumes: 8 AM-1 PM

Youth Fitting & Feeding Clinic 9:30 AM

Tour of Tidy View Dairy 9:30 AM (bus loads at Milk Source Genetics)

Youth Judging Contest 10 AM Registration, 11 AM Judging, 1 PM Awards

- Official Judge: Perry Phend

HOTEL ACCOMODATIONS

Radisson Hotel and Conference Center, Green Bay: 920.494.7300

Green Bay Airport Settle Inn: 920.499.1900

Cambria Suites, Appleton: 920.733.0101

Days Inn & Suites, Kaukauna: 920.766.0088

TERMS OF SALE

Payments in full on sale day by cash or good check unless prior written arrangements have been made with Milk Source Genetics, LLC sale staff/management. For buyers not in attendance, full payment for purchases is due to the sale manager within 5 business days of the sale. No exceptions. Any special terms must have prior approval by Milk Source Genetics, LLC. All animals going out of state may stay at sale location, free of charge, one week past health paper completion. Health testing for animals exiting the state will begin the first business day after sale completion. Lots will sell on 'First Come, first served' basis. First person to pay full price is the buyer.

ABSENTEE BIDDING

If you are unable to attend the sale, please feel free to contact the sale management or any member of the sales staff. They will be happy to assist and represent you at the sale. The sale staff is available to assist potential buyers unable to attend as well as anyone in attendance.

TRUCKING

The sale management will make every effort to assist you with trucking arrangements for your purchases.

IN THE EVENT OF A TIE BID

In the event that there should be a tie bid, each of the participating bidders will be given the opportunity to increase their bid and submit it to the staff/management.

LOWER BIDS

Bids that are submitted below listed price will be reviewed and are subject to approval by sale staff/management after 1 p.m. on March 26, 2016.

SALES FORCE

Kevin Jorgenson.... kejo@powerweb.net..... 920.210.3992
Lynn Harbaugh..... harbaughl@nscooperative.com... 920.420.1524
Chad Ryan..... amyryanajr@hotmail.com..... 920.960.1449
Joel Kietzman..... kietzr@gmail.com..... 608.289.0096
Paul Trapp..... paul.trapp@genusplc.com..... 608.332.0079
Brandon Ferry..... smlurvey@gmail.com..... 608.335.8861
Ryan Krohlow..... showtime5500@gmail.com..... 920.639.5500
Tom DeGroot..... laurydegroot@yahoo.com..... 608.819.2879
Perry Phend..... phendp@nscooperative.com..... 715.533.0608
Brian Behnke..... bbehnke@semex.com..... 608.279.2016
Jamie Endvick..... jendvick@milksource.net..... 608-566-9096

Cattle Preparation

Jason Danhoff..... 715.305.0522
Brandon Smith..... 715.509.0025
Cody Schultz..... 920.209.6789
Alan Kruse..... 563.451.9952
Ben Powers..... 715.440.5397



LOVHILL GOLDWYN KATRYSHA EX-96
Supreme Champion International Holstein Show 2015
DAM OF LOT 1

KATRYSHA!

- *All-American Aged Cow 2015*
- *Res All-Canadian Mature Cow 2015*
- *Supreme Champion World Dairy Expo 2015*
- *Grand Champion WI Championship Show 2015*
- *Unanimous All-American 5-Yr-Old Cow 2014*
- *All-Canadian 5-Yr-Old Cow 2014*
- *HM Global Cow of Year 2014*
- *Res Grand Champion Royal Winter Fair 2014*
- *Res Grand Champion International Show 2014*
- *Nom All-American 4-Yr-Old Cow 2013*

Lot 1

FIRST CHOICE FEMALE

Mutually Agreeable Sire

Lovhill Goldwyn Katrysha

CAN 108547761 Excellent-96 EEEEE *TR *TL *TV
 12K GTPI +1614G 12/15
 4-09 2x 305d 30590 4.8 1465 2.9 886
 5-09 2x 307d 28310 4.4 1246 3.1 886
 3-05 2x 365d 27700 5.0 1390 5.0 1360
 2-05 2x 305d 20080 4.1 830 3.1 616

Braedale Goldwyn

CAN 10705608 GP-CAN GM 12/11 *TV *TL
 PTA -371M +13F +1P 99R 12/15
 PTA +1.81T +1.51UDC +1.53FLC GTPI +1882G

Bienert Encounter Kim

CAN 8707653 EX-90 EEEE-4E-CAN
 9-01 2x 365d 21333 4.5 961 3.3 696
 6-00 2x 311d 20150 4.8 972 3.5 703
 8-00 2x 349d 19687 4.8 941 3.4 665
 4-09 2x 365d 19640 4.7 919 3.5 679
 6-11 2x 329d 18681 5.2 972 3.6 667
 Life: 2244d 125742 4.7 5956 3.4 4261

3rd Dam

Bienert Inspiration Kesha VG-87 VVEV *1 STAR
 8-02 2x 365d 21688 4.2 917 3.5 756
 Life: 2769d 159594 4.3 6802 3.5 5525

4th Dam

Bienert Sheik Katherine-ET VG-86 VG-MS-CAN
 11-4 2x 365d 25179 3.7 937 3.1 747
 Life: 9 Lact 198870 3.8 7626 3.2 6356

5th Dam

Bienert Starlite Kimmy VG-85 VG-MS-CAN *2 STAR
 8-08 2x 365d 22465 3.8 853
 Life: 8 Lact 151381 3.9 5917

6th Dam

Hor-Mar Kim Supreme EX-90 EVEV-CAN *4 STAR
 6-11 2x 365d 27445 4.0 1091
 Life: 8 Lact 183297 3.9 7101

7th Dam

Hor-Mar Karen Queen VG-CAN
 6-11 2x 365d 21797 3.5 761



CHARWILL ATTIC MARCY EX-95
Unanimous All-Canadian 4-Yr-Old Cow 2015
DAM OF LOT 2

MARCY!

- Res All-American 4-Yr-Old Cow 2015
- Unanimous All-Canadian 4-Yr-Old Cow 2015
- Grand Champion Canadian National Show 2015
- All-Canadian Sr 3-Yr-Old Cow 2014
- Res Int Champion, Royal Winter Fair 2014
- All-American Sr 3-Yr-Old Cow 2014
- Int Champion International Holstein Show, 2014

Lot 2

FIRST CHOICE FEMALE

Mutually Agreeable Sire

Charwill Attic Marcy

CAN 11034616 Excellent-95 EEEEE *TR *TV *TL
 4-05 2x 332d 32650 4.5 1482 3.3 1082
 2-11 2x 365d 32357 4.2 1358 3.5 1122
 1-11 2x 301d 18640 4.4 816 3.7 697

Allyndale-I Attic-ET

CAN 8956386 GP-83-CAN *TV *TL *TY
 PTA -818M +13F -11P 98R 12/15
 PTA +2.19T +1.84UDC +1.42FLC GTPI +1710G

Dixellen Leduc Mavis

CAN 9292508 VG-88 VVEV-CAN *2 STAR
 5-09 2x 365d 24065 3.8 908 3.2 774
 6-11 2x 305d 23095 3.9 901 3.0 692
 8-00 2x 344d 22892 3.4 771 3.0 688
 3-04 2x 353d 22273 3.5 784 3.1 694
 4-06 2x 365d 21840 3.6 789 3.2 699
 Life: 2051d 129352 3.7 5834 3.1 4025

3rd Dam

Dixellen Prelude Mavis EX-EEEE-CAN

5-05 2x 365d 28239 3.9 1098 3.2 902
 Life: 5 Lact 126498 4.1 5238 3.4 4255

4th Dam

Hanoverhill Designer Miss EX-CAN *12 STAR

4-03 2x 365d 27227 4.3 1168 3.4 924
 Life: 8 Lact 176736 4.4 7771 3.4 5933

5th Dam

Monteith Miss Kanada VG-87 *2 STAR

4-07 2x 325d 21252 4.1 864 3.1 653

6th Dam

A Helens Astronaut Kay VG-85-CAN *4 STAR

5-00 2x 365d 30902 3.3 1027
 Life: 7 Lact 204036 3.4 6850

- HM All-Canadian Sr Heifer Calf 1980

7th Dam

Miss Dreamstreet Fond Helen EX-90

9-04 2x 305d 20289 4.1 836
 Life: 8 Lact 128462 3.9 5024

8th Dam

Vetamere Proud Harriet VG-86

4-05 2x 283d 15571 3.9 604

9th Dam

Mooreline Reflection Bell VG-85

8-01 2x 305d 16810 3.6 604



STRANS-JEN-D TEQUILA-RED-ET EX-95

Unanimous All-American R&W 4-Yr-Old Cow 2015
DAM OF LOT 3

TEQUILA!

- *Unan All-American R&W 4-Yr-Old Cow 2015*
- *Grand Champion International R&W Show 2015*
- *Nom All-Canadian 4-Yr-Old Cow 2015*
- *Unan All-American R&W Sr 3-Yr-Old Cow 2014*
- *Nom All-American B&W Sr 3-Yr-Old Cow 2014*
- *Nom All-Canadian B&W Sr 3-Yr-Old Cow 2014*
- *Grand Champion International R&W Show 2014*
- *Res All-American R&W Sr 2-yr-Old Cow 2013*
- *Grand Champion MN State Holstein Show, 2013*
- *Nom All-American R&W Fall Yearling, 2012*

Lot 3

FIRST CHOICE FEMALE

Mutually Agreeable Sire

Strans-Jen-D Tequila-Red-ET

141024338 Excellent-95 EEEEE
 9K GTPI +1572G 12/15
 2-05 2x 365d 24550 4.7 1145 3.4 831
 3-09 2x 306d 23990 4.4 1048 3.3 793
 4-10 2x 171d 17340 4.3 742 3.0 525 RIP

Scientific Director-Red

138551069 Excellent-90 *TV *TL *TD
 PTA -1661M -6F -27P 97R 12/15
 PTA +1.70T +1.78UDC +.77FLC GTPI +1591G

Jen-D Devil Tiffany-Red-ET

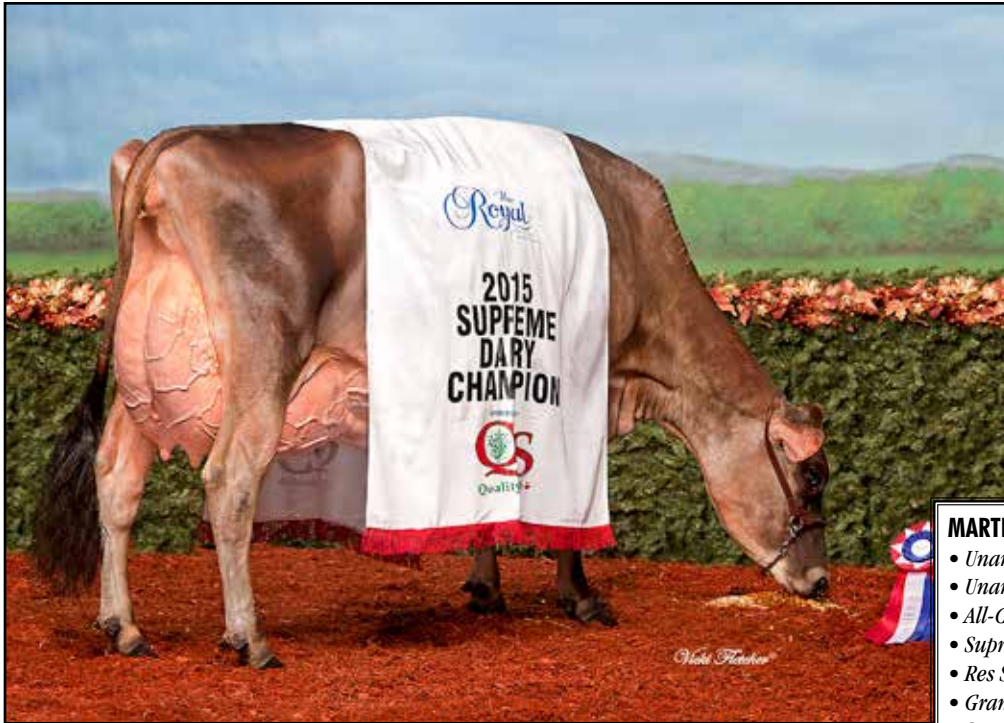
62918023 Excellent-95 EEEEE 2E
 6-06 2x 365d 36140 4.1 1472 3.3 1196
 4-01 2x 365d 29830 4.3 1292 3.1 934
 5-04 2x 316d 27120 3.9 1048 3.1 846
 2-04 2x 365d 26840 4.1 1095 3.1 843
 Life: 1750d 142000 4.2 5987 3.3 4661

Tiffany!

- *Seven time R&W All-American Nominee!*
- *Nom All-American R&W 125,000LB Cow 2015*
- *Sr Champion Mid-West Fall/Nat 2015*
- *Nom All-American R&W Aged Cow 2014*
- *Grand Champion MN State Fair R&W Show 2014*
- *Grand Champion Mid-West Sprg/Nat R&W 2014*
- *Nom All-American R&W 5-Yr-Old Cow 2012*
- *Grand Champion Mid-East Fall/Nat R&W 2012*
- *Grand Champion MN State Fair R&W Show 2012*
- *Grand Champion MN State R&W Show 2012*
- *Nom All-American 4-Yr-Old Cow 2011*
- *Supreme Champion MN State Fair 2011*
- *Nom All-American Sr 2-Yr-Old Cow 2009*
- *Int & HM Grand Champion MN State Show 2009*
- *HM All-American R&W Winter Yrlg Heifer 2008*
- *All-American R&W Winter Calf 2007*

3rd Dam

Jen-D Pred Tosha-Red VG-88 EX-MS
 4-07 2x 365d 31470 2.7 859 3.4 1057



MUSQIE IATOLA MARTHA-ET EX-93%
Unanimous All-American & All-Canadian 4-Yr-Old Cow 2015
DAM OF LOT 4

MARTHA!

- *Unanimous All-American 4-Yr-Old Cow 2015*
- *Unanimous All-Canadian 4-Yr-Old Cow 2015*
- *All-Canadian Champion Cow 2015*
- *Supreme Champion, Royal Winter Fair, 2015*
- *Res Supreme Champion World Dairy Expo 2015*
- *Grand Champion International Jersey Show 2015*
- *Supreme Champion WI State Fair Jr Show 2015*
- *Grand Champion WI Spring Jersey Show 2015*
- *Nominated All-American Sr 3-Yr-Old Cow 2014*

Lot 4

FIRST CHOICE FEMALE

Mutually Agreeable Sire

Musqie Iatola Martha-ET

JECAN 11000764 Excellent-93% 4-08
 4-03 2x 335d 27240 4.6 1249 3.6 975

SC Gold Dust Paramount Iatola-ET

112118277 29JE3301
 CDCB GTPA 12/15 99%R -381M .12% +6F .06% -3P
 AJCA 12/15 GPTAT 99%R +1.2 GJPI 99%R +22

Avonlea Jed Maxie-ET

JECAN 8833800 EX-90 4E *4 STAR
 8-07 2x 305d 23503 6.2 1459 3.5 816
 5-03 2x 305d 21991 5.2 1142 3.6 785
 7-00 2x 305d 20555 5.4 1118 3.5 711
 • *Grand Champion All Atlantic Jersey Show 2009*

3rd Dam

Avonlea Renaissance Mischief VG-88 *6 STAR

3-01 2x 305d 16408 4.6 750 3.8 625

- *Nom All-Canadian Jr 3-Yr-Old Cow 1999*
- *1st Jersey Futurity World Dairy Expo 1999*
- *Nom All-Canadian Jr 2-Yr-Old Cow 1998*
- *1st Jr 2-Yr-Old Cow Stratford 1998*
- *Nom All-Canadian Jr Yrlg Heifer 1997*
- *Jr Champion Ontario Dairy Discovery 1997*

4th Dam

Avonlea Mct Maxine VG-86-CAN

3-05 2x 305d 13140 5.0 660 4.0 524

- *Nom All-Canadian Sr Calf 1993*

5th Dam

Avonlea Title's Milady VG-86-CAN

3-01 2x 283d 8565 5.7 484 4.3 397

6th Dam

Avonlea J I S Amity EX-CAN

8-05 2x 305d 14770 4.7 689 3.6 535

Life: 8 Lact 102335 4.8 4965 3.8 3885

7th Dam

Avonlea Master's Annette EX-91-CAN *1 STAR

5-10 2x 14505 5.1 733

8th Dam

Avonlea Advance Amy VG-85-CAN

7-01 2x 305d 12364 5.4 667



BLONDIN REDMAN SEISME-RED-ET EX-97 2E
International R&W Cow of the Year 2013
DAM OF LOTS 5 & 6

SEISME!

- *Unanimous All-American R&W 125,000 Lb Cow 2014*
- *1st Mature Cow Royal Winter Fair 2014*
- *HM Champion International R&W Show 2014*
- *International R&W Cow of Year 2013*
- *2012 Red & White Cow of Year*
- *Unanimous All-American R&W Aged Cow 2012*
- *Grand Champion Grand International 2012*
- *Grand Champion NY Sprg R&W Show 2012*
- *Grand Champion Midwest R&W Sprg Show 2012*
- *All-Canadian R&W Mature Cow 2010 & 2011*
- *Res Sup Champion Royal Winter Fair 2010 & 2011*
- *Grand Champion Grand International 2010*

Lot 5

MILKSOURCE RT SECRET-RED-ET

72230098 Good Plus-83 @ 2-09 *TL *TD
 Born: October 31, 2012
 9K GTPI +1740G 12/15
 2-03 2x 322d 18200 4.0 720 3.6 651
 3-02 2x 23d 1810 4.1 74 3.4 62 RIP

Fresh: January 30, 2016

Scientific Destry-ET

138122625 Excellent-92 *RC *TV *TL *TY
 PTA -675M -21F +0P 99R 12/15
 PTA +2.04T +2.18UDC +.51FLC GTPI +1958G

Regancrest MB Breyell-ET

63606863 VG-87 VG-MS-CAN *3 STAR *RC
 2-03 2x 365d 31876 3.1 994 3.1 992
 4-03 2x 365d 29672 3.3 990 3.1 915

Valleyriver Ruben Redmn-Red-ET

CAN 10646281 EX-CAN *TV *TL
 PTA -1093M -27F -17P 99R 12/15
 PTA +.56T +1.26UDC -.89FLC GTPI +1473G

Blondin R Marker Supra

CAN 9355514 VG-89 EVEE-CAN *11 STAR *RC
 3-06 2x 364d 30256 4.2 1281 3.2 959
 2-03 2x 365d 22564 4.1 915 3.2 728
 • *Grand Champion Lachute 2004*

Maternal sister to Supra

Blondin James Supra EX-CAN *9 STAR

• *Res All-Canadian 4-Yr-Old Cow 2004*

Lookout P Redburst-ET

CAN 106030980 *TV *TL *TY
 PTA -150M -6F +7P 98R 12/15
 PTA +2.2PL 3.00SCS +4.2DPR 6.4%DCE
 PTA +2.22T +2.02UDC +1.57FLC 98R 12/15
 GTPI +2086G

Blondin Redman Seisme-Red-ETS

CAN 104241337 Excellent-97 EEEEE 2E *TL *TD
 3-09 2x 365d 43763 3.6 1585 2.9 1272
 7-07 2x 365d 40460 4.0 1599 3.2 1312
 6-00 2x 365d 35047 4.0 1411 3.3 1160
 5-00 2x 255d 28104 3.6 1002 3.0 835
 2-00 2x 353d 22341 3.5 793 3.3 738
 Life: 1764d 165294 3.9 6391 3.3 5404

LOT 6 - MILKSOURCE SYMP SHAY-RED-ET

313923817 • Born: October 26, 2013 *TL *TD
 9K GTPI +1867G 12/15 • *Donor Dam*
 2-02 2x 35d 2890 4.3 123 3.0 88 RIP
 Fresh: January 18, 2016

Dymentholm S Sympatico-ET x Seisme-Red

LOT 7 - MILKSOURCE LTS SALLY-RED-ET

3130676004 • Born: September 20, 2015

Blondin Lotus-ET x Symp Shay-Red-ET

LOT 8 - MILKSOURCE ARMANI SILVER *RC

3130676039 • Born: January 18, 2016

Mr Apples Armani-ET x Shay-Red-ET

LOT 9 - MILKSOURCE DEFINT SILLY-RED

3130676041 • Born: January 31, 2016

Scientific B Defiant-ET x Secret-Red-ET

3rd Dam

Blondin Skychief Supra EX-93-3E-CAN *24 STAR

9-04 2x 365d 42758 4.1 1733 3.1 1305

Life: 6 Lact 263796 3.9 10207 3.4 8955

• *Grand Champion Papineau 2000*

• *Grand Champion Berthier 2001*



IDEE SHOTTLE LALIA EX-95 EEEEE 2E
 HM All-Canadian Milking Yrlg 2009
 DAM OF LOTS 11, 12 & 13 AND 2ND DAM OF LOT 10

LALIA!

- Star of Breed - Holstein USA 2013
- 3rd Sr 2-Yr-Old Cow Quebec Sprg/Show 2010
- HM All-Canadian Milking Yrlg 2009
- Res All-Quebec Milking Yrlg 2009
- 3rd Milking Yrlg Royal Winter Fair 2009

Lot 10

MILKSOURCE DOORMAN LASHES

3130675969 99%RHA-I
 Born: June 8, 2015

LOT 11 - MILKSOURCE DMAN LEGEND-ET

3130675998 • Born: September 10, 2015 99%RHA

Val-Bisson Doorman-ET x Lalia

LOT 12 - MILKSOURCE ARCH LINKEDIN-ET

3130676011 • Born: December 1, 2015

Eclipse Atwoods Archrival-ET x Lalia

PTA +3.84T 77R 12/15

LOT 13 - MILKSOURCE ARCHRIVL LEGO-ET

3130676015 • Born: December 2, 2015

Eclipse Atwoods Archrival-ET x Lalia

3rd Dam

Idee Durham Lalika-ET VG-88 EX-MS-CAN

5-01 2x 365d 29650 4.4 1305 3.5 1049

• HM All-Atlantic Jr Yrlg Heifer 2005

4th Dam

Idee Leduc Lydie-ET EX-91 EVEE *6 STAR

3-06 2x 365d 30875 4.8 1481 3.4 1047

Life: 4 Lact 136052 5.3 7227 3.7 5101

5th Dam

Ravenswell Lydia EX-92 EEEEE DOM *19 STAR

5-01 2x 365d 24579 4.6 1124 3.4 827

Val-Bisson Doorman-ET

CAN 107281711 VG-87-CAN *TV *TL *TY *TD

PTA -49M +27F +21P 93R 12/15

PTA +3.0PL 2.58SCS -0.6DPR 5.2%DCE

PTA +3.26T +2.23UDC +1.96FLC 90R 12/15

GTPI +2262G

Milksource Gold Laiken-ET

72230169 Very Good-88 VG-MS @ 2-06

1-11 2x 253d 20220 3.7 746 3.1 619 RIP

De-Su 521 Bookem-ET

66636657 Very Good-88 GM 8/15 *TR *TV *TL *TY

PTA +1347M +29F +50P 99R 12/15

PTA +1.66T +1.12UDC +1.15FLC GTPI +2341G

Val-Bisson Shottle Imelda

CAN 106173432 VG-89 EVEV-CAN

1-11 2x 365d 25531 4.2 1076 3.7 957

Braedale Goldwyn

CAN 10705608 GP-CAN GM 12/11 *TV *TL

PTA -371M +13F +1P 99R 12/15

PTA +1.81T +1.51UDC +1.53FLC GTPI +1882G

Idee Shottle Lalia

CAN 8933339 Excellent-95 EEEEE 2E

5-03 2x 365d 48240 4.5 2191 3.1 1484

6-06 2x 266d 39800 4.5 1773 3.0 1207

3-09 2x 338d 36340 3.6 1308 3.1 1129

2-00 2x 365d 28311 3.6 1016 3.2 893

Life: 1025d 119321 4.3 5100 3.1 3686



MORSAN MISS WONDER-ET VG-87
SELLS AS LOT 14 & DAM OF LOT 15

MISS WONDER!

- 1st Jr 2-Yr-Old Cow WI District 7 Show 2015
- 4th Jr 2-Yr-Old Cow WI Championship Show 2015
- 3rd Spring Yrlg Heifer Midwest Sprg/Nat 2014

Lot 14

MORSAN MISS WONDER-ETS

CAN 11556508 Very Good-87 VG-MS @ 2-04 99%RHA-1

Born: March 16, 2013

77K GTPI +1853G 12/15

2-00 2x 331d 27970 3.8 1049 3.0 844

Due: April 10, 2016 to Lirr Drew Dempsey 7H09264

Sandy-Valley Bolton-ET

131823833 Excellent-90 GM 4/11 *BY *TV *TL

PTA +1355M +46F +33P 99R 12/15

PTA +1.38T +1.45UDC +1.04FLC GTPI +1908G

Zani O-Man-Oriella-ET

ITA 17990238458 GP-84-2YR-ITA

2-00 2x 305d 31363 4.0 1243 4.1 1276

Braedale Goldwyn

CAN 10705608 GP-CAN GM 12/11 *TV *TL

PTA -371M +13F +1P 99R 12/15

PTA +1.81T +1.51UDC +1.53FLC GTPI +1882G

Stadacona Outside Abel

CAN 8077661 VG-88-CAN *29 STAR

3-03 2x 365d 36599 4.6 1695 3.0 1093

4-06 2x 365d 34035 4.3 1448 2.9 1003

2-02 2x 330d 22240 3.4 752 3.1 686

Life: 3 Lact 107117 4.2 4447 3.0 3263

• HM All-Atlantic Winter Yrlg Heifer 2001

• 1st Int. Heifer Calf Drummond Show 2000

Zani Bolton Mascalse-ET

ITA 17990516801 *TV *TL *TY

PTA +1094M +31F +39P 95R 12/15

PTA -19PL 2.87SCS -1.4DPR 8.1%DCE

PTA +1.43T +1.43UDC +.36FLC 93R 12/15

GTPI +2002G

Eastside Lewisdale Gold Missy

CAN 7808378 EX-95 EEEE 2E *17 STAR

5-00 2x 315d 36479 4.2 1532 3.0 1095

7-01 2x 349d 35362 4.8 1713 3.2 1119

3-01 2x 308d 31837 4.4 1407 3.2 1016

2-00 2x 338d 25723 4.6 1190 3.3 844

Life: 1463d 139690 4.5 6311 3.1 4310

LOT 15 - MILKSOURCE NUMERO UNO WISH

3130675942 • Born: March 28, 2015

Amighetti Numero Uno-ET x Miss Wonder

MISSY!

- All-American 5-Yr-Old Cow 2011
- Supreme Champion World Dairy Expo 2011
- 1st 5-Yr-Old Cow International Show 2011
- All-Canadian 5-Yr-Old Cow 2011
- Supreme Champion Royal Winter Fair 2011
- 1st 5-Yr-Old Cow Royal Winter Fair 2011
- All-American Jr 3-Yr-Old Cow 2009
- Res Int Champion International Show 2009
- 1st Jr 3-Yr-Old Cow International Show 2009
- Unanimous All-American Jr 2-Yr-Old Cow 2008
- 1st Jr 2-Yr-Old Cow International Show 2008
- Unanimous All-Canadian Jr 2-Yr-Old Cow 2008
- 1st Jr 2-Yr-Old Cow Royal Winter Fair 2008
- All-Western Jr 2-Yr-Old Cow 2008
- Res Grand Champion Western Fall/Nat 2008
- HM Grand Champion Westerner Showcase 2008

3rd Dam

Stadacona Progress Anibel VG-85-CAN *2 STAR

4-03 2x 365d 38186 3.4 1312 3.2 1208

Life: 8 Lact 266137 3.4 9034 3.1 8311



KHW REGMENT APPLE B-RED-ETN EX-90
SELLS AS LOT 16 AND DAM OF LOTS 17 & 18

Lot 16

KHW REGMENT APPLE B-RED-ETN

70244493 Excellent-90 EEEEE @ 4-03 *TL *TD
Born: September 27, 2010 • Donor Dam
13K GTPI +1932G 12/15
3-09 2x 341d 31990 5.1 1621 3.9 1253
2-09 2x 320d 29740 4.8 1428 3.5 1054

STBVQ Rubens-ET

CAN 5844883 VG-88-CAN GM 8/04 *RC *TV *TL
PTA -823M -32F -10P 99R 12/15
PTA +.37T +1.10UDC -.51FLC GTPI +1376G

Stelbro Renita Ranger-Red

CAN 6019019 Excellent-94 EEEEE 3E *8 STAR
7-04 2x 365d 29760 3.9 1168 3.1 924
• All-American R&W 2001, 1998, 1996, 1995

Regancrest Elton Durham-ET

2250783 Excellent-90 GM 8/01 *TR *CV *TL
PTA -694M -50F -8P 99R 12/15
PTA +1.49T +1.30UDC +1.29FLC GTPI +1527G

Clover-Mist Alisha-ET

15149329 Excellent-93 EEEEE 3E GMD DOM *RC
8-07 2x 365d 36920 4.2 1553 3.4 1258
5-03 3x 365d 34670 4.8 1654 3.5 1220
5-03 3x 365d 32750 4.2 1388 3.5 1136
3-01 3x 365d 30690 4.9 1495 3.6 1110
Life: 2999d 226470 4.7 10659 3.6 8149

Carrousel Regiment-Red-ET

128891296 *TV *TL
PTA -900M -16F -16P 99R 12/15
PTA -1.6PL 3.17SCS -2.4DPR 13.2%DCE
PTA +.48T +.23UDC +-.26FLC 98R 12/15
GTPI +1297G

Kamps-Hollow Altitude-ET

129136431 Excellent-95 EEEEE 2E DOM *RC *CV *TL
7-00 2x 365d 39690 4.7 1849 3.5 1385
4-03 2x 365d 30430 4.2 1267 3.1 956
2-00 2x 365d 28830 3.8 1097 3.5 1013
Life: 1844d 144460 4.4 6295 3.7 5288

LOT 17 - MILKSOURCE DT AMAZON-RED-ET

31306760350 • Born: December 21, 2015

Scientific B Defiant-ET x Apple B-Red

LOT 18 - MILKSOURCE DEFIANT ANDY-ET

3130676038 • Born: December 23, 2015 *RC

Scientific B Defiant-ET x Apple B-Red

3rd Dam

Clover-Mist Augy Star-ET EX-94 4E DOM *RC

7-10 3x 365d 43140 5.0 2136 3.3 1421

Life: 2486d 206250 4.7 9793 3.5 7187

4th Dam

D-R-A August EX-96 EEEE 4E DOM

8-05 2x 365d 27460 4.3 1187 3.2 871

Life: 3443d 190200 4.4 8281 3.3 4457

• Nominated All-American Aged Cow 1986

• All-Wisconsin Aged Cow 1987

5th Dam

D-R-A Ideal Precious Leader EX-90 2E

7-06 2x 358d 20090 3.9 787 3.4 675

6th Dam

D-R-A Princess Lad Leader EX-90 3E

9-05 2x 305d 19160 4.2 809



JOLIBOIS FLORIA CONTEND-RED-ET EX-90
Nominated All-American R&W Sr 2-Yr-Old Cow 2015
SELLS AS LOT 19

FLORIA!

- Nom All-American R&W Sr 2-Yr-Old Cow 2015
- 4th Sr 2-Yr-Old Cow International R &W Show 2015
- All-American R&W Fall Yearling in Milk 2014
- 1st Yearling in Milk, International R&W Show 2014
- HM All-Canadian R&W Senior Calf, 2013
- 1st Sr Calf QC International R&W Show 2013
- 2nd Sr Calf Royal Winter Fair, 2013

Lot 19

JOLIBOIS FLORIA CONTEND-RED-ET

CAN 107918419 Excellent-90 EEEEE @ 3-03
Born: September 15, 2012
1-11 2x 297d 20760 4.3 886 3.2 657
2-10 2x 217d 17160 3.8 653 3.1 524 RIP

Due: Aug. 14, 2016 to KHW Kite Advent-Red-ET
Ultrasound Female

Valleyriver Ruben Redmn-Red-ET

CAN 10646281 EX-CAN *TV *TL
PTA -1093M -27F -17P 99R 12/15
PTA +.56T +1.26UDC -.89FLC GTPI +1473G

Sunspark R Marker Dolly

CAN 9309434 VG-86-CAN *2 STAR *RC
4-03 2x 365d 28205 4.0 1139 3.2 901

KHW Kite Advent-Red-ET

133002953 Excellent-94 *TV *TL *TD
PTA -1218M -23F -29P 99R 12/15
PTA +1.66T +1.34UDC +.90FLC GTPI +1562G

Nuttingdale Rubens Fire-Red

132436063 Excellent-90 EX-MS
3-10 2x 365d 29395 4.0 1187 3.2 947
2-07 2x 365d 20595 4.0 815 3.1 645
5-03 2x 305d 21890 3.8 841 3.3 733

Patience Showline Contender-Red

CAN 7483577 EX-95-CAN ST'10 *TV *TL
PTA -2379M -53F -63P 98R 12/15
PTA +3.2PL 2.69SCS +2.6DPR 8.3%DCE
PTA +1.70T +2.12UDC +1.05FLC 99R 12/15
TPI +1473M

Dala-Star-RL Feather-Red-ET

63539917 VG-88 EVVV-CAN * 2 STAR
4-06 2x 365d 31089 3.9 1210 3.2 994
2-11 2x 365d 29725 4.0 1186 3.2 952
1-11 2x 321d 22740 3.5 807 3.3 747

3rd Dam

Nuttingdale Mardi Fiona-Red VG-88 EEEVV

4-06 2x 365d 27830 3.6 992 2.9 797

4th Dam

Nuttingdale J Logic Feather VG-86

5-08 2x 341d 28200 3.4 997 2.9 815
Life: 1417d 100920 3.6 3583 2.9 2944

5th Dam

Masal Feathers Charm-ET EX-90 EEEVE 2E *RC

5-02 2x 365d 28300 3.9 1091 3.1 874
Life: 2392d 147430 4.0 5842 3.3 4224

6th Dam

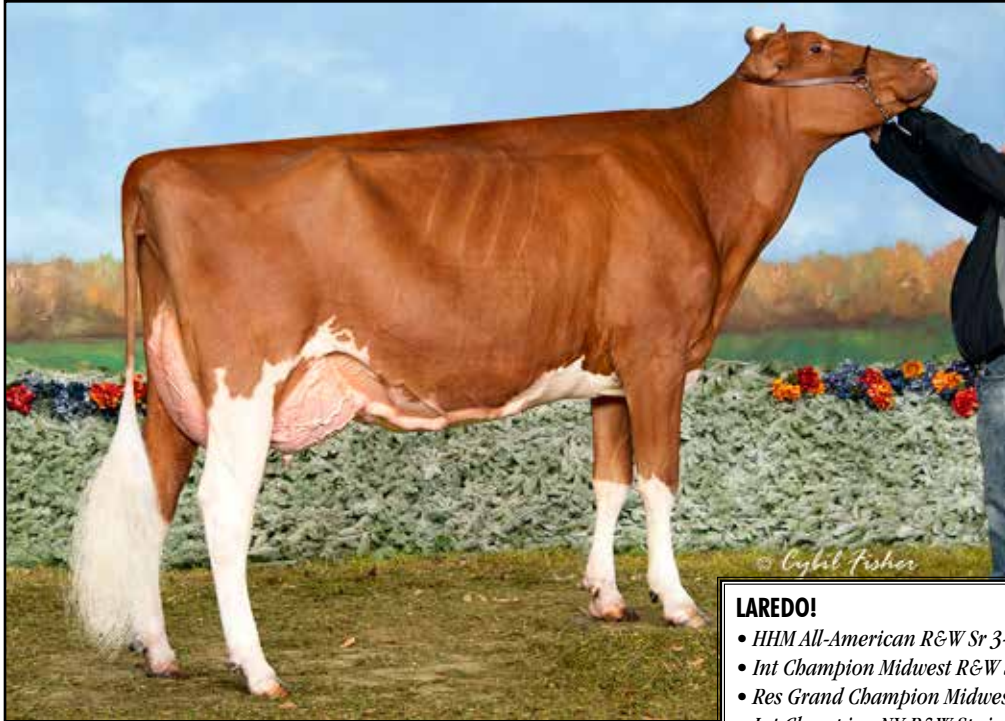
Ren-Bow Enhancer Feather-Red EX-92 2E GMD DOM

3-09 2x 365d 27587 4.2 1171 3.3 910

7th Dam

Maple-G Fire Fancy Red EX-90 EX-MS 2E

4-05 2x 289d 13971 3.9 547 3.5 494



REYNCREST REAL LAREDO-RED EX-92
HHM All-American R&W Sr 3-Yr-Old Cow 2015
DAM OF LOT 20

LAREDO!

- *HHM All-American R&W Sr 3-Yr-Old Cow 2015*
- *Int Champion Midwest R&W Spring Show 2015*
- *Res Grand Champion Midwest R&W Show 2015*
- *Int Champion NY R&W Spring Show 2014*
- *Grand Champion NY R&W Jr Show 2014*
- *Res Int Champion Midwest R&W Spring Show 2014*

Lot 20

MILKSOURCE DESTIND LUCK-RED

72300983
 Born: March 3, 2015

Curr-Vale Destined-ET

66401838 *RC *TY *TY
 PTA +423M +15F +28P 95R 12/15
 PTA +5.2PL 2.75SCS +2.2DPR 5.4%DCE
 PTA +1.57T +1.72UDC +.22FLC 91R 12/15
 GTPI +2240G

Reyncrest Real Laredo-Red

7-735744 Excellent-92 VEEEE @ 3-10
 2-03 3x 351d 27990 4.0 1131 3.3 910

De-Su Observer-ET

65917481 Excellent-90 GM 12/14 *TR *TV *TL *TY
 PTA +1023M +19F +29P 99R 12/15
 PTA +1.51T +2.15UDC -.59FLC GTPI +2199G

Curr-Vale Goldwyn Delicious

62717592 Excellent-94 VEVEE 2E DOM *RC *CV
 3-02 3x 305d 27870 4.4 1216 3.1 858
 2-02 3x 334d 27100 3.4 909 3.1 831

Hurtgen-Vue Reality-Red

134690997 Very Good-88 *TV *TL
 PTA -508M +46F +0P 99R 12/15
 PTA +1.38T +.88UDC +1.90FLC TPI +2015M

Reyncrest Advent Laurel-ET

65972716 Very Good-85 @ 4-06 *RC
 4-00 3x 365d 29900 3.2 965 2.9 862
 5-07 3x 311d 28750 3.3 959 2.9 820
 2-11 3x 330d 25480 3.3 800 2.9 701
 1-11 3x 311d 19170 3.4 646 2.9 563
 Life: 1329d 103870 3.3 3436 2.9 3004

3rd Dam

Reyncrest Talent Layna-ET EX-93 EEEEE 2E

6-01 3x 355d 32060 3.8 1228 3.2 1031
 Life: 1634d 130380 3.6 4685 3.2 4167

4th Dam

Mis Co-Vista Rubens Layla EX-94 2E DOM

5-09 3x 365d 42700 4.4 1864 3.0 1289
 Life: 1316d 132300 4.4 5801 3.2 4233

- *HM All-American Sr 2-Yr-Old Cow 2005*
- *Jr All-American Sr 2-Yr-Old Cow 2005*

5th Dam

Miss Co-Vista RM Lara-TW EX-92 EEEVE *B/R

4-05 2x 305d 25850 3.6 933 2.9 741

6th Dam

Wea-Land Juror Lulu EX-91 EEEVE

6-07 2x 305d 31430 3.8 1209 3.1 976
 Life: 1448d 117440 3.8 4429 3.2 3734

7th Dam

Stonehurst WL Love Lace VG-86 VG-MS

3-04 2x 303d 21390 4.2 889 3.4 725

8th Dam

Vio-Net Jethro Linda VG-85

5-04 3x 365d 36900 3.7 987 3.0 817

9th Dam

Delmona Sexation Sally VG-88

5-11 2x 365d 27240 3.7 1006 3.0 809



MILKSOURCE WIRE RACKET-RED
Unanimous All-American R&W Fall Calf 2015
SELLS AS LOT 21

RACKET!

- *Unanimous All-American R&W Fall Calf 2015*
- *Res Jr Champion International R&W Show 2015*
- *1st Fall Calf International R&W Show 2015*
- *3rd Fall Calf WI R&W Championship Show 2015*

Lot 21

MILKSOURCE WIRE RACKET-RED

73200951
 Born: September 6, 2014

Hylite Barbwire-Red-ET

9748330C Very Good-87 *TV *TL *TY *TD
 PTA -819M -11F -14P 98R 12/15
 PTA -1.9PL 2.91SCS -1.3DPR 10.7%DCE
 PTA +1.75T +1.03UDC +1.90FLC 97R 12/15
 GTPI +1559G

Oneeda Cntnd Rachelrae-Red

70288267 Excellent-92 EEEEE-CAN
 1-11 2x 312d 21020 4.2 840 3.3 697
 • *Nom All-American R&W Sr 2-Yr-Old Cow 2014*
 • *5th Sr 2-Yr-Old Cow International R&W 2014*

Deslacs Shaquille-ET

103512991C GP-82-CAN *RC *TV *TY
 PTA -315M -21F -21P 99R 12/15
 PTA +.95T +.76UDC +1.17FLC GTPI +1501G

Rainyridge Talent Barbara

7543170C Excellent-95 *RC
 3-04 2x 365d 34465 3.6 1257 3.3 1133
 • *All-American 5-Yr-Old Cow 2010*

Patience Showline Contender-Red

CAN 7483577 EX-95-CAN ST*10 *TV *TL
 PTA -2379M -53F -63P 98R 12/15
 PTA +1.70T +2.12UDC +1.05FLC TPI +1473M

Oneeda Advent Rudy Rae

138658412 Very Good-87 VG-MS *RC
 6-00 3x 215d 22870 4.7 1078 3.1 716
 5-00 3x 303d 20290 4.6 932 3.4 697
 2-01 3x 206d 20480 4.6 940 3.3 680
 4-00 3x 271d 18770 5.0 930 3.3 617
 3-00 3x 263d 17380 5.2 903 3.5 614

3rd Dam

Ms R-Way Starlite Rae-ET VG-88 VG-MS
 6-02 3x 365d 36900 4.5 1674 3.2 1169
 Life: 2130d 176270 4.5 7862 3.2 5705

4th Dam

Scientific Skyler Rae-ET EX-93 EEEVE
 4-04 2x 335d 32290 3.2 1047 3.1 1017
 • *Sr Champion Western Sprg/Nat 2000*

5th Dam

C Hanoverhill Tony Rae EX-96 3E GMD DOM
 6-11 2x 365d 40220 4.1 1661 3.3 1331
 Life: 2247d 166396 4.1 6904 3.4 5612

6th, 7th & 8th Dams

C Hanoverhill TT Roxette-ET EX-94 2E GMD
 10-0 3x 365d 35040 4.3 1519 3.0 1063
 Life: 2104d 164789 4.1 6760 3.1 3587

Mil-R-Mor Roxette EX-CAN *30 STAR

7-01 2x 365d 24531 4.7 1153
 Life: 6 Lacs 121418 4.7 5728

C Glenridge Citation Roxy EX-97 4E GMD

10-1 2x 365d 25280 4.2 1061
 Life: 3620d 209784 4.5 9471

'Queen of the Breed I & II'



OVALTOP RLTY RONNIE-RED-ET VG-88
Res All-American R&W Fall Yrlg Heifer 2014
SELLS AS LOT 22

RONNIE!

- *Res All-American R&W Fall Yrlg Heifer 2014*
- *2nd Fall Yrlg Heifer, International R&W Show 2014*
- *Junior Champion WI R&W Championship Show 2014*
- *Res Junior Champion Midwest Sprg/Nat R&W Show 2014*
- *Junior Champion NY Spring R&W Show 2014*

Lot 22

OVALTOP RLTY RONNIE-RED-ET

142128772 Very Good-88 EVEV @ 3-00
 Born: September 14, 2012
 2-11 2x 176d 15610 4.5 710 3.5 551 RIP

Due: Sept. 2, 2016 to Elmbridge Lookout Rambo-Red
 CAN 11344358 Ultrasound Male

Hurtgen-Vue Reality-Red

134690997 Very Good-88 *TV *TL
 PTA -508M +46F +0P 99R 12/15
 PTA +2.3PL 3.09SCS +1.5DPR 6.3%DCE
 PTA +1.38T +.88UDC +1.90FLC 99R 12/15
 TPI +2015M

Jon-Lu Advent Rona-Red-ET

139892527 Excellent-91 EEEVE
 3-08 2x 365d 34070 4.1 1408 3.2 1102
 5-03 2x 365d 32450 3.8 1227 3.0 973
 2-03 2x 365d 29060 4.3 1239 3.1 914
 Life: 1438d 115770 4.2 4810 3.2 3700

Pursuit September Storm-ET

CAN 6820564 EX-CAN ST'02 GM 2/07 *TV *RC *TL
 PTA -475M +19F -20P 99R 12/15
 PTA +.97T +.52UDC +2.08FLC GTPI +1520G

Hurtgen-Vue HHR Vanessa-Red

17321694 Excellent-93 3E DOM
 7-11 2x 365d 37230 3.7 1394 3.2 1179
 Life: 2786d 193130 3.9 7613 3.2 6235

KHW Kite Advent-Red-ET

133002953 Excellent-94 *TV *TL *TD
 PTA -1218M -23F -29P 99R 12/15
 PTA +1.66T +1.34UDC +.90FLC GTPI +1562G

Ridgedale Rhoda-Red-ET

137558308 Excellent-91 EEEVE 2E
 3-09 2x 305d 28900 4.8 1373 3.1 883
 2-02 2x 305d 24000 4.6 1092 3.1 735
 5-08 2x 322d 22770 5.2 1175 2.7 616

3rd Dam

Ridgedale-T Rehema-Red-ET EX-93 EEEVE 2E
 2-06 3x 365d 24010 3.4 819 3.0 724

4th Dam

Hanover-Hill-R Mi Rochelle EX-93 EVEEE *RC
 5-10 3x 365d 24980 4.6 1154 3.6 887

- *1st Winter Yrlg Eastern Sprg/Nat 1996*

5th Dam

Hanover-Hill-R Rhonda-TW EX-94 4E GMD DOM
 6-02 2x 365d 38820 4.0 1562 2.9 1141

Life: 2823d 196650 4.3 8448 3.2 6215

6th Dam

C Hanoverhill Star Roxy-ET EX-92 2E GMD DOM
 4-05 2x 365d 31780 4.4 1394 3.1 994

- *Nom All-American Fall Calf 1987*
- *Nom All-American Fall Yearling 1988*

7th Dam

Mil-R-Mor Roxette EX-CAN *30 STAR
 7-01 2x 365d 24531 4.7 1153

Life: 6 Lact 121418 4.7 5728

8th Dam

C Glenridge Citation Roxy EX-97 4E GMD
 10-1 2x 365d 25280 4.2 1061

Life: 3620d 209784 4.5 9471

'Queen of the Breed I & II'



SILVERMINE ADV TALLY-RED-ET EX-93 2E
HHM All-American R&W 4-Yr-Old Cow 2011
DAM OF LOTS 23, 25, 26, 27, 28 29, & 30

TALLY!

- *HHM All-American R&W 4-Yr-Old Cow 2011*
- *Grand Champion Midwest Spring R&W Show 2011*
- *Nom 2010 Red & White Cow of the Year*
- *Nom All-American R&W Sr 3 -Yr-Old Cow 2010*
- *Res Grand Champion Grand International 2010*
- *Int Champion Grand International 2010*
- *All-American Sr 2-Yr-Old R&W Cow 2009*
- *All-Canadian R&W Sr 2-Yr-Old Cow 2009*
- *Int Champion Royal R&W Winter Fair 2009*

Lot 23

MILKSOURCE CT TASMIN-RED-ET

71251991 Very Good-85 @ 2-09
 Born: October 10, 2012
 9K GTPI +1481G 12/15

Bred: Sept. 11, 2016

Aggravation Lawn Boy P-Red

133080890 Excellent-93 GM 8/08 *PO *TV *TL *TY
 PTA -155M -21F +9P 99R 12/15
 PTA +.07T +.55UDC +.04FLC GTPI +1749G

Sandy-Valley-W B Crystal-ET

63114952 Very Good-86 VG-MS *RC *TY
 2-01 2x 365d 36350 2.8 1005 3.3 1202

KHW Kite Advent-Red-ET

133002953 Excellent-94 *TV *TL *TD
 PTA -1218M -23F -29P 99R 12/15
 PTA +1.66T +1.34UDC +.90FLC GTPI +1562G

Spungold R-M Tammy-Red-ET

132725446 Excellent-93 EEEEE 2E GMD
 3-04 2x 365d 42690 3.4 1446 2.9 1235
 5-03 2x 305d 39110 3.2 1255 2.8 1100
 2-05 2x 311d 27700 3.2 885 2.8 772
 Life: 1262d 135110 3.3 4459 2.9 3951

Sandy-Valley Colt P-Red-TW

68731810 *PC *TV *TL *TY *TD
 PTA +168M -50F +4P 99R 12/15
 PTA +4.9PL 2.78SCS +2.5DPR 6.7%DCE
 PTA +.27T +.98UDC +.38FLC 99R 12/15
 GTPI +1788G

Silvermine Adv Tally-Red-ET

138294193 Excellent-93 EX-MS 2E *TD
 5-05 2x 365d 38700 4.2 1621 3.2 1254
 3-05 2x 365d 32920 4.3 1426 3.2 1042
 2-06 2x 308d 23680 4.1 978 3.2 762
 Life: 1266d 108890 4.3 4730 3.3 3564

LOT 24 - MILKSOURCE RODDIE TESSA

3130675946 • Born: June 1, 2015 *RC
Deervue-Acres Gld Roddie-ET x Tasmin

LOT 25 - MILKSOURCE DEFNT TIFFANY-ET

73200966 • Born: December 23, 2014 *RC
Scientific B Defiant-ET x Tally-Red-ET

LOT 26 - MILKSOURCE DEFNT TIERNEY-ET

73200967 • Born: December 24, 2014 *RC
Scientific B Defiant-ET x Tally-Red-ET

LOT 27 - MILKSOURCE DT TICTAC-RED-ET

73200972 • Born: December 31, 2014

Scientific B Defiant-ET x Tally-Red-ET

LOT 28 - MILKSOURCE DEF TALLADEGA-ET

73200974 • Born: January 2, 2015 *RC

Scientific B Defiant-ET x Tally-Red-ET

LOT 29 - MILKSOURCE GOLDWYN TEA-ET

3130676024 • Born: December 7, 2015 *RC

LOT 30 - MILKSOURCE G TRAVERSE-TW-ET

3130676031 • Born: December 19, 2015 *RC

Braedale Goldwyn x Tally-Red-ET



BRACKLEYFARM CHELIOS CHEERIO EX-95
All-American 4-Yr-Old Cow 2015
DAM OF LOT 31

CHEERIO!

- All-American 4-Yr-Old Cow 2015
- HM All-Canadian 4-Yr-Old Cow 2015
- HM Grand Champion International Show 2015
- Nom All-American Sr 3-Yr-Old Cow 2014
- HM All-American Fall Milking Yrlg 2012
- HM All-Canadian 4-H Sr Calf 2011

Lot 31

MILKSOURCE BARRY CHELSEA-TW

3130675977 *TR *TL *TD
 Born: July 24, 2015

Askew-Janes Barry-ET

137205947 *TR *TV *TL *TY
 PTA -313M +8F -7P 96R 12/15
 PTA -1.7PL 2.87SCS -1.3DPR 8.6%DCE
 PTA +.46T +.78UDC +.29FLC 86R 12/15
 TPI +1587

Brackleyfarm Chelois Cheerio

CAN 10848075 Excellent-95 EEEEE *TL *TD
 13K GTPI +1842G 12/15
 3-09 2x 327d 32360 4.3 1387 3.2 1044
 4-10 2x 213d 21140 4.3 918 3.1 656 RIP

Picston Shottle-ET

GBR 598172 EX-95-GBR GM 12/11 *TV *TL
 PTA +511M +27F +11P 99R 12/15
 PTA +1.22T +.88UDC +.72FLC GTPI +1937G

Diamond-Oak Bwm Amanda-ET

132046756 Very Good-85 VG-MS GMD DOM *TL
 2-03 3 365d 37520 4.4 1665 3.3 1229

Domicole Chelios-ET

CAN 7927543 VG-86-CAN EXTRA'12 *B/R *TV *TY
 PTA +170M +47F +13P 97R 12/15
 PTA +2.53T +1.73UDC +2.40FLC GTPI +2005G

Brackleyfarm Goldwyn Corine

CAN 7647932 VG-88 VVVV-CAN
 6-00 2x 319d 25999 4.6 1208 3.6 933
 4-06 2x 365d 25188 4.9 1228 3.6 908

3rd Dam

Brackleyfarm Co Star VG-88 VVVV-CAN
 5-05 2x 365d 26155 4.4 1153 3.5 904
 Life: 4 Lact 109209 4.2 4634 3.6 3931

4th Dam

Brackleyfarm Marks Stripper GP-82-CAN
 3-05 2x 365d 20765 4.8 990 3.7 772

5th Dam

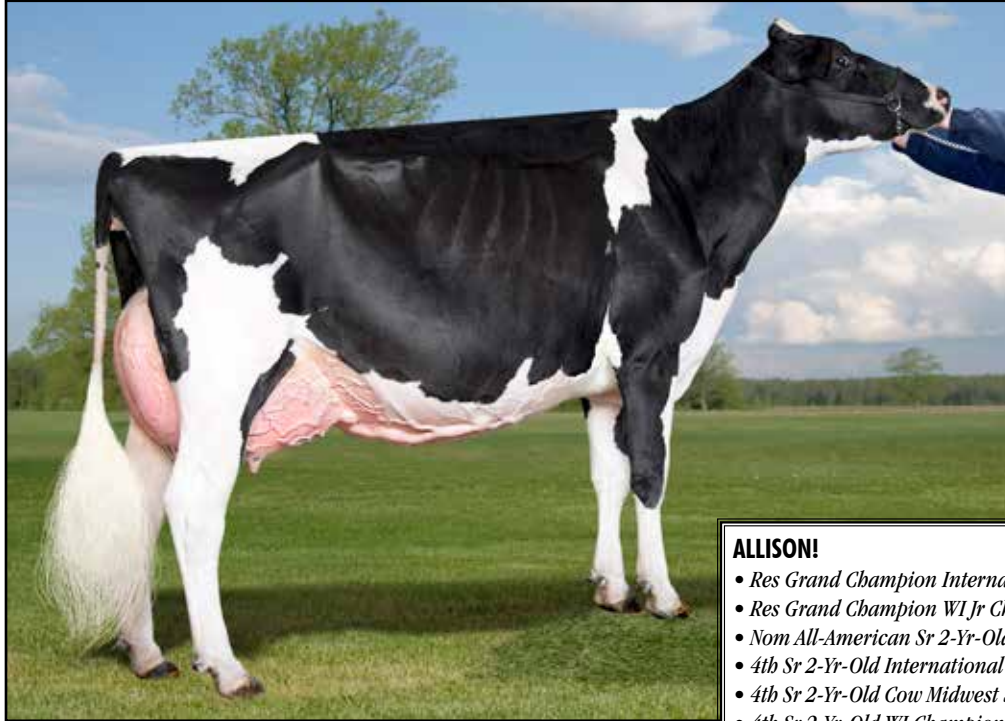
Brackleyfarm Aero Stripe VG-85 VG-MS-CAN
 3-07 2x 365d 28380 4.5 1279 3.5 994

6th Dam

Diamond Hill Lancer Star VG-88 VG-MS *2 STAR
 5-03 2x 365d 23893 4.0 1012 3.0 758
 Life: 8 Lact 165246 4.0 6656 3.1 5176

7th Dam

Holmesland Star Lancer-Red VG-85 VG-MS-CAN
 7-02 2x 305d 21182 4.1 860 3.2 688
 Life: & Lact 107265 4.1 4387 3.2 3466



KINGSMILL ATWOOD ALLISON-ET EX-92
Nominated All-American Sr 2-Yr-Old Cow 2013
DAM OF LOTS 32 & 33

ALLISON!

- *Res Grand Champion International Jr Show 2015*
- *Res Grand Champion WI Jr Championship 2015*
- *Nom All-American Sr 2-Yr-Old Cow 2013*
- *4th Sr 2-Yr-Old International Show 2013*
- *4th Sr 2-Yr-Old Cow Midwest Sprg/Nat 2013*
- *4th Sr 2-Yr-Old WI Championship Show 2013*
- *1st Fall Yrlg Heifer Midwest Sprg/Nat 2012*
- *2nd Fall Heifer Calf Midwest Sprg/Nat 2011*

Lot 32

MILKSOURCE ASK ME OUT-ET

73200945
 Born: September 2, 2014

Pine-Tree Sid-ET

62175895 VG-86-CAN ST'10 *TV *TY
 PTA -464M +5F -8P 99R 12/15
 PTA -1.5PL 2.84SCS -3.9DPR 6.3%DCE
 PTA +2.15T +1.97UDC +.08FLC 99R 12/15
 GTPI +1621G

Kingsmill Atwood Allison-ET

69453202 Excellent-92 EEEVE
 9K GTPI +1606G 12/15
 3-09 2x 365d 38310 4.2 1593 2.9 1127
 2-03 2x 365d 26160 4.0 1044 3.0 790

Regancrest-MR Drham Sam-ET

207184639 GM 8/06 ST'08 *TR *TV *TL
 PTA -459M +3F -10P 99R 12/15
 PTA +.48T +.33UDC +.89FLC GTPI +1477G

Pine-Tree Finley Minnie-ET

61733050 Excellent-90 VVEVE DOM *5 STAR
 6-10 2x 354d 38565 4.0 1541 3.1 1179
 Life: 3 Lact 103596 3.5 3706 3.2 3322

Maple-Downs-I G W Atwood-ET

CAN 8956379 Excellent-90 *TR *TV *TL *TY
 PTA -34M +29F +3P 99R 12/15
 PTA +3.78T +2.64UDC +2.97FLC GTPI +1952G

Ernest-Anthony Alison-ET

134318424 Very Good-86 VVEVV @ 2-10
 3-01 2x 305d 28320 3.5 980 3.0 861
 2-01 2x 312d 19540 3.0 585 3.1 611

LOT 33 - MILKSOURCE SID APRIL-ET

73200947 • Born: September 2, 2014

Pine-Tree Sid-ET x Allison

Due: Aug. 29, 2016 to Mr Chassity Gold Chip-ET
 7H010920 Ultrasound Female

3rd Dam

Tri-Day Ashlyn-ET EX-96 2E GMD DOM

4-09 2x 365d 43090 4.8 2079 3.5 1503
 Life: 1374d 144770 4.6 6665 3.5 5135

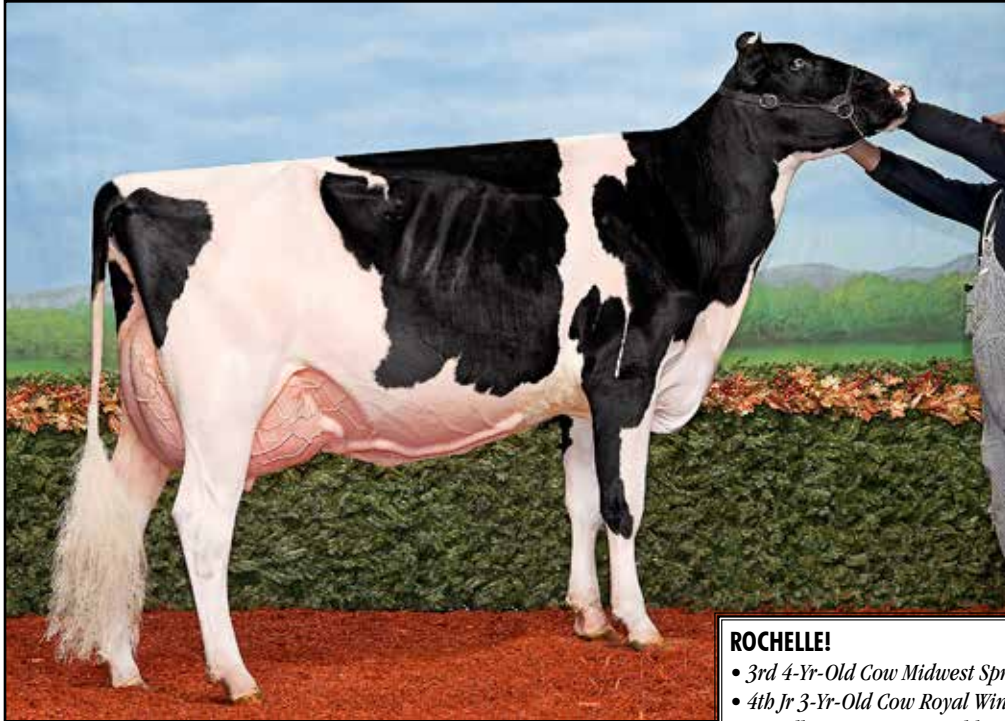
- *All-Time All-American 4-Yr-Old Cow*
- *HHM All-Time All-American Sr 3-Yr-Old Cow*
- *All-American & All-Canadian 4-Yr-Old Cow 2001*
- *Supreme Champion World Dairy Expo 2001*
- *All-American Sr 3-Yr-Old Cow 2000*
- *Res All Canadian Sr 3-Yr-Old Cow 2000*

4th Dam

Bendy-Brook Odyssey Favorite EX-92 2E DOM

6-01 2x 337d 22670 3.4 770 3.1 706

- *Res All-American Produce of Dam 2001*
- *Nom Jr All-American Aged Cow 1995*



KINGSWAY TENACIOUS ROCHELLE EX-94
SELLS AS LOT 34 & DAM OF LOT 35

ROCHELLE!

- 3rd 4-Yr-Old Cow Midwest Sprg/Nat Show 2015
- 4th Jr 3-Yr-Old Cow Royal Winter Fair 2014
- Res All-Ontario Jr 2-Yr-Old Cow 2013
- 2nd Jr 2-Yr-Old Cow Ontario Summer Show, 2013
- Res Grand Champion Carleton-Russell, 2013

Lot 34

KINGSWAY TENACIOUS ROCHELLE

CAN 11087190 Excellent-94 EEEEE @ 4-07
Born: May 19, 2011 • Donor Dam
3-04 2x 293d 25230 3.9 985 3.3 822
2-00 2x 314d 20059 4.0 811 3.1 621
4-03 2x 173d 18560 4.4 816 3.2 590 RIP

Fresh: September 2, 2015

Mesland Duplex-ET

ESP 9201683779 *TV *TL
PTA -257M -41F +2P 99R 12/15
PTA +1.81T +.71UDC +1.34FLC GTPI +1443G

Salem Goldwyn Teresa-ET

CAN 7665977 EX-94 EEEE-CAN
3-05 2x 365d 40840 4.1 1687 3.0 1219
• All-Canadian 2009, 2007

Silky Gibson-ET

6215479C EX-96-CAN ST'99 *TV *TL
PTA -1055M +3F -23P 99R 12/15
PTA +.63T +.24UDC -.37FLC GTPI +1343G

Kingsway Charles Ray Anne

CAN 10537216 VG-88 VEVV-CAN
3-02 2x 338d 24609 4.2 1038 3.4 839
4-03 2x 306d 23688 4.2 989 3.3 783
5-02 2x 313d 23000 4.3 978 3.2 729
8-02 2x 365d 22833 4.2 956 3.4 779
Life: 1922d 130756 4.3 5600 3.3 4308

LOT 35 - MILKSOURCE GOLD RING

3130675986 • Born: September 2, 2015

Mr Chassity Gold Chip-ET x Rochelle

Futurecrest Tenacious

CAN 10831129 EX-90-CAN ST'14 *TV *TL *TY
PTA -638M -52F -24P 93R 12/15
PTA -4.2PL 3.05SCS -.9DPR 7.4%DCE
PTA +1.06T +.05UDC +.70FLC 90R 12/15
GTPI +1230G

Kingsway Gibson Rhonda

CAN 7388645 VG-88 VVEV-CAN *1 STAR
5-05 2x 308d 22422 3.6 798 3.1 688
6-08 2x 308d 20670 4.4 912 3.3 686
2-02 2x 354d 19821 4.4 877 3.4 667
4-05 2x 291d 19614 4.0 778 3.3 639
Life: 1553d 101422 3.9 3982 3.2 3261

3rd Dam

Kingsway Starbuck Raven EX 2E-CAN *2 STAR

6-02 2x 365d 25432 4.0 1010 3.3 849
Life: 13 Lact 249631 3.7 9234 3.3 8324

4th Dam

Kingsway Legend Rita VG-88 VG-MS-CAN

8-11 2x 308d 24021 3.8 910 3.0 714
Life: 9 Lact 186625 3.6 6726 3.0 5671

5th Dam

Kingsway Royal Star VG-86 VG-MS-CAN

5-11 2x 305d 22923 4.5 1030 3.3 747



EHRHARDT GOLD BEAUTY-ET EX-92
Unanimous All-American Jr 3-Yr-Old Cow 2013
DAM OF LOTS 36 & 37

GOLD BEAUTY!

- *Unanimous All-American Jr 3-Yr-Old Cow 2013*
- *1st Jr 3-Yr-Old Cow International Show 2013*
- *Res Grand Champion WI Championship 2013*
- *Int Champion WI Championship 2013*
- *1st Jr 3-Yr-Old Cow WI Championship 2013*
- *1st Jr 2-Yr-Old Cow Quebec Spring 2012*
- *2nd Jr 2-Yr-Old Cow Canada Convention Show 2012*

Lot 36

MILKSOURCE DOORMAN BRANDY-ET

3130675992 99%RHA-I
 Born: September 7, 2015

Val-Bisson Doorman-ET

CAN 107281711 VG-87-CAN *TV *TL *TY *TD
 PTA -49M +27F +21P 93R 12/15
 PTA +3.0PL 2.58SCS -0.6DPR 5.2%DCE
 PTA +3.26T +2.23UDC +1.96FLC 90R 12/15
 GTPI +2262G

Ehrhardt Gold Beauty-ET

66738363 Excellent-92 EEVEE @ 3-06
 3-01 2x 316d 26611 3.8 1017 3.2 852
 2-00 2x 313d 19400 3.6 698 3.6 689

De-Su 521 Bookem-ET

66636657 Very Good-88 GM 8/15 *TR *TV *TL *TY
 PTA +1347M +29F +50P 99R 12/15
 PTA +1.66T +1.12UDC +1.15FLC GTPI +2341G

Val-Bisson Shottle Imelda

CAN 106173432 VG-89 EVEV-CAN *2 STAR
 1-11 2x 365d 25531 4.2 1076 3.7 957

Braedale Goldwyn

CAN 10705608 GP-CAN GM 12/11 *TV *TL
 PTA -371M +13F +1P 99R 12/15
 PTA +1.81T +1.51UDC +1.53FLC GTPI +1882G

Stanhope Brea Starbuck-ET

CAN 6813573 Excellent-94 EEEEE 2E
 9-00 2x 305d 29430 5.3 1563 3.2 935
 5-11 2x 305d 27240 4.8 1307 3.1 837
 3-04 2x 362d 22410 3.9 882 3.5 781

Maternal sister to Brea

Rayverley Prelude Evelyn-ET EX 3E *7 STAR

8-08 2x 365d 25046 3.9 968 3.5 873

LOT 37 - MILKSOURCE DOORMAN BINGO-ET

3130675999 • Born: September 11, 2015

Val-Bisson Doorman-ET x Gold Beauty-ET

TONY BEAUTY!

- *All-Canadian Mature Cow 1992-93-95-99*
- *All-American Aged Cow 1992-95-99*
- *Supreme Champion World Dairy Expo 1995 & '99*
- *Res Grand Champion Royal Winter Fair 1999*
- *All-American People's Choice Winner 1999*
- *Holstein International Cow of Year 1999*
- *Res Grand Champion Royal Winter Fair 1995*
- *Grand Champion Royal Winter Fair 1993*
- *Nom All-Canadian Mature Cow 1991*
- *HM All-Canadian 4-Yr-Old Cow 1989*

3rd Dam

Rainyridge Tony BeautyEX-CAN 5E *9 STAR

10-5 2x 365d 29081 3.5 1005 3.1 913
 Life: 8 Lact 199869 3.3 6592 3.2 6455

4th Dam

Despics Temp Diane VG-85-CAN

8-01 2x 313d 17524 3.5 619 3.2 562
 Life: 7 Lact 109278 3.7 4032 3.3 1578



MD-DUN-LOAFIN LAUT ELLS-ET EX-91

7th Fall Milking Yearling International Holstein Show 2014

SELLS AS LOT 38 & DAM OF LOT 39

Lot 38

MD-DUN-LOAFIN LAUT ELLS-ET

Full sister to Ells

MD-Dun-Loafin Lauth Ellie-ET VG-88

- Res All-American Fall Yrlg Heifer 2013
- Junior Champion Midwest Sprg Nat'l 2013
- Unanimous All-American Fall Calf 2012
- Unanimous All-Canadian Fall Calf 2012
- Junior Champion Royal Winter Fair 2012
- Junior Champion Eastern Fall National 2012

Comestar Lauthory-ET

CAN 103455217 EXTRA'10 *TV *TL *TY
 PTA +240M +18F +8P 99R 12/15
 PTA -0.5PL 2.95SCS -0.1DPR 6.2%DCE
 PTA +2.55T +1.78UDC +1.23FLC 98R 12/15
 GTPI +1963G

Ma-Tom-Ba Rubens Elly-ET

61192774 Excellent-90 EEVEE 3E *RC
 5-08 2x 365d 41630 4.5 1880 3.2 1352
 3-08 2x 365d 36330 4.2 1540 3.3 1190
 7-08 2x 305d 35500 4.4 1549 3.1 1107
 2-03 2x 365d 29070 4.3 1258 3.3 945
 Life: 1940d 180610 4.3 7851 3.4 6072

71246443 Excellent-91 EEEVE @ 3-00

Born: September 4, 2012

1-11 2x 365d 22820 3.9 888 3.3 761

3-00 2x 169d 16880 3.5 588 3.2 535 RIP

Due: July 21, 2016 to Regancrest Dundee-ET

94HO10276 Ultrasound Female

Braedale Goldwyn

CAN 10705608 GP-CAN GM 12/11 *TV *TL
 PTA -371M +13F +1P 99R 12/15
 PTA +1.81T +1.51UDC +1.53FLC GTPI +1882G

Comestar Lautelma Igniter-ET

CAN 100748831 VG-89-CAN 13*
 4-02 2x 365d 49804 4.7 2343 3.6 1728
 Life: 1125d 113927 4.5 5115 3.6 4083

STBVQ Rubens-ET

CAN 5844883 VG-88-CAN GM 8/04 *RC *TV *TL
 PTA -823M -32F -10P 99R 12/15
 PTA +.37T +1.10UDC -.51FLC GTPI +1376G

Budjon-JK Linjet Evalyn-ET

126082827 Excellent-91 EEEVV @ 4-01
 3-06 2x 365d 38510 4.2 1631 3.2 1216
 2-06 2x 357d 22890 3.8 881 3.4 768

LOT 39 - MILKSOURCE LAST EVENING

73200940 • Born: September 1, 2014

Lookout P Last Chance-ET x Laut Ells

3rd Dam

Krull Broker Elegance EX-96 3E GMD DOM

5-07 2x 365d 40950 3.7 1522 3.3 1350
 Life: 2356d 183710 3.7 6878 3.4 6267

• HM All-American Aged Cow 1999

• HM All-Canadian Mature Cow 1999

4th Dam

Krull Starbuck Excellency EX-90 GMD DOM

3-03 2x 365d 27140 3.5 937 3.4 930

5th Dam

Krull TT Excellency EX-90 VEEE DOM

3-02 2x 363d 24319 3.5 862 3.4 829
 Life: 1733d 109780 3.7 4077 3.3 3605

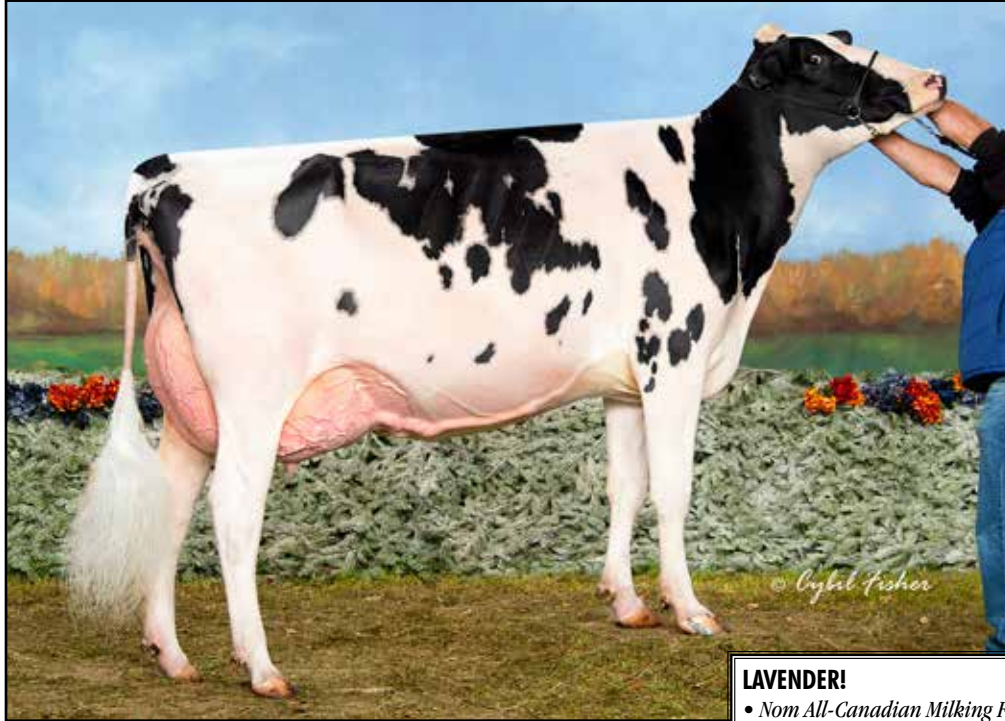
6th Dam

Krull Boot Mark Excellency EX-92 2E GMD

6-06 2x 365d 27410 3.8 1040 3.1 868
 Life: 3026d 201440 3.5 7105 3.0 4634

7th Dam

Krull Kingstead Excellency EX-92 4E GMD



PAVUE WINDBROOK LAVENDER EX-92
Nom All-Canadian Milking Yearling 2014
SELLS AS LOT 40

LAVENDER!

- *Nom All-Canadian Milking Fall Yrlg 2014*
- *2nd Sr Yrlg Heifer Expo Ormstown 2014*
- *5th Milking Fall Yrlg International Show 2014*
- *4th Sr 2-Yr-Old Cow International Show 2015*

Lot 40

PAVUE WINDBROOK LAVENDER

CAN 107442714 Excellent-92 EEEEE @ 3-03
 Born: September 1, 2012
 2-00 2x 326d 21140 3.5 744 3.3 701
 3-00 2x 168d 15960 3.9 630 3.2 509 RIP

Due: Aug. 10, 2016 to Mr Chassity Gold Chip-ET
 7H010920 Ultrasound Female

Gillette Brilea F B I-ET

CAN 8209524 EX-94-CAN EXTRA '05 *TV *TL *TY
 PTA +1030M +21F +21P 99R 12/15
 PTA +.89T +.29UDC +.72FLC GTPI +1797G

Gillette Blitz 2nd Wind-ET

CAN 7352248 VG-88-CAN *34 STAR
 2-02 3x 365d 39096 3.6 1422 3.0 1182

Calbrett-I H H Champion-ET

CAN 6961162 EX-CAN GM 1/08 *BY *TV *TL
 PTA +535M -1F +6P 99R 12/15
 PTA +.26T -.63UDC -.82FLC GTPI +1484G

PAVUE LASTING LADY-ET

CAN 9034655 VG-85 VG-MS-CAN *1 STAR
 3-01 2x 303d 21922 3.4 749 3.3 714
 2-01 2x 323d 19043 4.0 767 3.4 649

Gillette Windbrook-ETS

CAN 7816429 EX-97-CAN EXTRA'10 *TV *TL *TY
 PTA +184M +34F +16P 99R 12/15
 PTA +0.6PL 3.00SCS -2.3DPR 5.9%DCE
 PTA +2.29T +1.38UDC +2.13FLC 99R 12/15
 GTPI +2019G

PAVUE CHAMPION LORETTE

CAN 101669448 EX-91 EVEE 2E-CAN
 5-09 2x 354d 34220 3.6 1235 3.2 1081
 6-11 2x 365d 29908 3.5 1038 3.2 957
 3-05 2x 365d 29870 3.4 1019 3.2 966
 8-02 2x 312d 26854 3.5 946 3.2 855
 4-09 2x 328d 24958 3.7 926 3.5 870
 Life: 2075d 164565 3.5 5841 3.3 5352

3rd Dam

PAVUE LEADING LADY-ET EX VEEV 2E-CAN *15 STAR

3-07 2x 365d 34253 3.6 1226 3.4 1153
 Life: 5 Lact 150371 3.6 5493 3.2 5033

4th Dam

MALOYA AERO LADY-ET GP-84-CAN *3 STAR

5-03 2x 305d 27729 3.2 895 3.1 864
 Life: 4 Lact 111992 3.5 3889 3.2 3596

5th Dam

COMESTAR LASS VALIANT-ET EX-CAN *21 STAR

7-11 2x 365d 28605 4.1 1184 3.1 884
 Life: 4 Lact 138065 3.9 5429 3.1 4343

6th Dam

ELYSA ANTHONY LEA EX-CAN *15 STAR

6-02 2x 365d 35770 3.9 1398 2.9 1049
 Life: 3 Lact 109580 4.0 4334 3.1 3439



WALES VIBE CALAMITY EX-94 2E
Res All-Wisconsin Sr 2-Yr-Old Cow 2012
SELLS AS LOT 41

CALAMITY!

- *Res All-Wisconsin Sr 2-Yr-Old Cow 2012*
- *2nd Sr 2-Yr-Old Cow & BU WI Championship 2012*

Lot 41

WALES VIBE CALAMITY

CAN 106257315 Excellent-94 EEEEE 2E
 Born: October 21, 2009
 4-01 2x 365d 36960 3.7 1360 3.4 1274
 2-05 2x 365d 27703 4.3 1179 3.5 983
 5-10 2x 173d 19339 3.5 673 3.2 628 RIP

Due: Sept. 19, 2016 to Mr Atwood Brokaw-ET
 7H011118 Ultrasound Male

Emerald-Acr-VR Vibe

138502001 Very Good-85 *TR *TV *TL
 PTA -979M -38F -13P 90R 12/15
 PTA -1.6PL 2.98SCS +0.9DPR 7.7%DCE
 PTA +1.80T +2.64UDC +1.98FLC 85R 12/15
 GTPI +1669G

Wales Axiom Cassidy

CAN 103779086 GP-82 VG-MS-2YR-CAN
 3-08 2x 365d 26543 4.2 1124 3.3 869
 5-02 2x 354d 21332 4.2 899 3.3 714
 2-03 2x 365d 20772 4.6 948 3.3 686

Klumbs Durham Pontiac

131348369 Excellent-92 *TR *TV *TL
 PTA -328M -49F -28P 99R 12/15
 PTA +.86T +1.73UDC +.91FLC GTPI +1470G

Mayerlane-SA BWM Misty-ET

131583435 Excellent-94 EEEEE 3E GMD DOM *TV
 10-5 2x 365d 45970 5.5 2517 3.0 1374
 Life: 3078d 320150 5.1 16402 3.1 10059

Canyon-Breeze Axiom-TW

130599463 *CV *TL
 PTA +21M +4F +2P 99R 12/15
 PTA +.86T +.07UDC +.50FLC TPI +1398M

Wales Cousteau Contessa

CAN 102086288 GP-83-2YR-CAN
 2-03 2x 363d 21142 4.5 948 3.2 675

3rd Dam

Wales Almanach Micheala GP-84-CAN
 4-08 2x 311d 26657 4.2 1120 3.4 895

4th Dam

Wales Broker Divine VG-86 VG-MS *1 STAR
 3-05 2x 320d 18340 4.3 789 3.5 642

5th Dam

Wales Don Evie VG-85 VG-MS-CAN
 12-5 2x 323d 21124 3.8 811 3.3 692
 Life: 10 Lact 184770 3.9 7211 3.3 6166

6th Dam

Wales Vibration Eva VG-85 VG-MS-CAN *1 STAR
 8-03 2x 305d 20199 4.0 805 3.2 639
 Life: 12 Lact 222217 3.9 8724 3.2 7172



MILKSOURCE ALY LIMIT-RED-ET VG-88
DAM OF LOT 42 & MATERNAL SISTER TO LOTS 43, 44 & 45

LIMIT-RED!

- 2nd & BU Sr 2-Yr-Old Cow WI R&W Champ. 2015
- 2nd & BU Sr 2-Yr-Old Cow WI District 7 Show 2015

Lot 42

MILKSOURCE RODDIE LISA

3130675945 *RC
 Born: June 2, 2015

Deervue-Acres Gld Roddie-ET

71535933
 PTA +177M +29F +7P 78R 12/15
 PTA +2.2PL 2.74SCS -0.3DPR
 PTA +1.91T +1.76UDC +1.92FLC 78R 12/15
 GTPI +2031G

Milksource Aly Limit-Red-ET

72230117 Very Good-88 VEEV @ 2-07
 2-05 2x 365d 20330 3.6 739 3.2 649 RIP

Mr Chassity Gold Chip-ET

140145553 Excellent-94 *TR *TV *TL *TY *TD
 PTA -237M +2F -22P 99R 12/15
 PTA +2.46T +2.48UDC +2.24FLC GTPI +1904G

Deervue-Acres Raven-ET

62952835 Excellent-90 EVVVE 2E GMD DOM *TV *TL
 5-00 2x 365d 42170 4.6 1947 3.3 1403
 Life: 1769d 139580 5.0 6966 3.5 4899

Synergy Always-Red-ET

69096074 *TV *TL *TY
 PTA -790M -10F -18P 95R 12/15
 PTA +2.48T +2.94UDC +1.50FLC GTPI +1705G

Wilstar-RS Tlt Limited-Red

62371079 Excellent-94 EEEVE 2E
 3-07 2x 365d 37420 4.1 1519 3.3 1221
 5-09 2x 365d 35360 3.8 1327 3.2 1118
 1-11 2x 365d 24200 3.8 928 3.2 778
 Life: 1391d 116170 3.9 4562 3.3 3776

LIMITED!

- Res All-American R&W Aged Cow 2011
- Res All-Canadian R&W Mature Cow 2011
- HM Grand Champion Canadian/Nat R&W 2011
- Res Grand Champion Grand International 2011
- Res All-Wisconsin Aged Cow 2011
- Nom All-American R&W 4-Yr-Old Cow 2009
- Res Sr Champion WI Championship Show 2009
- All-Wisconsin 4-Yr-Old Cow 2009

3rd Dam

Wilstar-RS Kite Lover-Red EX-91 EEEVE 2E
 4-07 2x 365d 41700 3.9 1627 3.3 1376
 Life: 1258d 116740 3.9 4511 3.2 3703

4th Dam

Wilstar-RS Rub Lazer-Red-TW EX-91 VEEEE 2E
 4-02 2x 365d 40920 3.7 1532 3.3 1356
 Life: 1550d 135190 3.7 4954 3.3 4504

- 3rd 4-Yr-Old Cow Grand International 2005

5th Dam

WVA-Greystone M Lexus-ET EX-91 EEEEV 2E *RC
 4-04 2x 365d 28490 3.1 890 3.0 842

6th Dam

Hanover-Hill Charlylu-Red VG-85
 4-11 3x 365d 35320 4.1 1463 3.6 1280

7th Dam

Hanover-Hill-R Lulu-Red-ET EX-91 EEEEE 2E



WILSTAR-RS TLT LIMITED-RED EX-94 2E
Res All-American R&W Aged Cow 2011
DAM OF LOTS 43, 44 & 45

LIMITED!

- *Res All-American R&W Aged Cow 2011*
- *Res All-Canadian R&W Mature Cow 2011*
- *HM Grand Champion Canadian/Nat R&W 2011*
- *Res Grand Champion Grand International 2011*
- *Res All-Wisconsin Aged Cow 2011*
- *Nom All-American R&W 4-Yr-Old Cow 2009*
- *Res Sr Champion WI Championship Show 2009*
- *All-Wisconsin 4-Yr-Old Cow 2009*

Lot 43

MILKSOURCE DFNT LIFE-RED-ET

73200953
 Born: September 19, 2014

Scientific B Defiant-ET

141123484 Very Good-87 *RC *TV *TL *TY
 PTA +379M -17F +2P 92R 12/15
 PTA -2.4PL 3.12SCS -2.6DPR 6.3%DCE
 PTA +3.46T +2.41UDC +2.31FLC 88R 12/15
 GTPI +1712G

Wilstar-RS Tlt Limited-Red

62371079 Excellent-94 EEEVE 2E
 3-07 2x 365d 37420 4.1 1519 3.3 1221
 5-09 2x 365d 35360 3.8 1327 3.2 1118
 1-11 2x 365d 24200 3.8 928 3.2 778
 Life: 1391d 116170 3.9 4562 3.3 3776

Regancrest S Braxton-ET

61898423 Excellent-95 *TR *TV *TL *TY
 PTA +1050M -11F +3P 99R 12/15
 PTA +2.57T +1.07UDC +1.48FLC GTPI +1463G

Scientific Gold Dior Rae-ET

138328405 Excellent-92 EEEEE DOM *RC *CV
 4-02 2x 365d 31910 4.7 1495 3.3 1039
 2-02 2x 365d 31900 4.7 1484 3.5 1112

Ladino Park Talent-Imp-ET

930377AUS Excellent-90 ST*03 *RC *TV *TL
 PTA -565M -44F -9P 99R 12/15
 PTA +1.08T +1.25UDC +.27FLC GTPI +1368G

Wilstar-RS Kite Lover-Red

134370389 Excellent-91 EEEVE 2E
 4-07 2x 365d 41700 3.9 1627 3.3 1376
 3-03 2x 365d 32070 3.6 1170 3.3 1059
 2-03 2x 327d 26160 3.7 977 3.3 869
 Life: 1258d 116740 3.9 4511 3.2 3703

LOT 44 - MILKSOURCE DFNT LAVA-RED-ET

73200973 • Born: January 1, 2015
Scientific B Defiant-ET x Limited-Red

LOT 45 - MILKSOURCE LOTUS L.A.-ET *RC

3130675988 • Born: September 3, 2015
Blondin Lotus-ET *RC x Limited-Red

3rd Dam

Wilstar-RS Rub Lazer-Red-TW EX-91 VEEEE 2E
 4-02 2x 365d 40920 3.7 1532 3.3 1356
 Life: 1550d 135190 3.7 4954 3.3 4504
 • *3rd 4-Yr-Old Cow Grand International 2005*

4th Dam

WVA-Greystone M Lexus-ET EX-91 EEEVE 2E *RC
 4-04 2x 365d 28490 3.1 890 3.0 842

5th Dam

Hanover-Hill Charlylu-Red VG-85
 4-11 3x 365d 35320 4.1 1463 3.6 1280

6th Dam

Hanover-Hill-R Lulu-Red-ET EX-91 EEEEE 2E



EASTSIDE SS LINDSY EX-94 2E
Nominated All-American Sr 3-Yr-Old Cow 2008
DAM OF LOT 46

LINDSY!

- *Nom All-Canadian Sr 3-Yr-Old Cow 2008*
- *Nom All-American Sr 3-yr-Old Cow 2008*
- *HM Grand Champion Dufferin & Wellington 2007*

Lot 46

MILKSOURCE REGINALD MIAMI

7320098
Born: March 3, 2015

Regancrest Reginald-ET

62496439 *TY
PTA -40M +21F +8P 97R 12/15
PTA -2.5PL 2.06SCS -0.3DPR 6.8%DCE
PTA +2.39T +2.22USC +.87FLC 96R 12/15
GTPI +1905G

MilkSource Dunde McLovin-ET

70721241 Very Good-87 VG-MS @ 3-06
2-02 2x 315d 22270 3.8 854 3.0 679

Braedale Goldwyn

CAN 10705608 GP-CAN GM 12/11 *TV *TL
PTA -371M +13F +1P 99R 12/15
PTA +1.81T +1.51UDC +1.53FLC GTPI +1882G

Regan-Joy Durham Regenia-ET

207184723 Excellent-92 EEEEE GMD DOM *TV
3-05 2x 365d 37880 3.6 1374 3.5 1316
2-04 2x 365d 28260 4.1 1163 3.4 962

Regancrest Dundee-ET

127640114 Excellent-95 *TV *TL *TY
PTA -660M -36F 017P 99R 12/15
PTA +1.12T +1.40UDC +.09FLC GTPI +1382G

Eastside SS Lindsay

CAN 7497264 Excellent-94 EEEEE 2E *TR
7-03 2x 365d 41780 3.7 1545 2.9 1226
3-07 2x 365d 38820 3.6 1413 3.0 1152
2-05 2x 343d 24365 3.6 884 3.0 739

3rd Dam

Eastside J Lopez VG-85-CAN

3-07 2x 365d 27866 3.1 869 3.0 842
Life: 4 Lact 108047 3.5 3814 3.2 3430

4th Dam

Eastside Integrity Jenell VG-85 VG-MS-CAN

6-00 2x 293d 25348 4.2 1060 3.2 805

5th Dam

Eastside Matthew Janet VG-85 EX-MS-CAN

5-00 2x 317d 20364 4.3 873 3.3 670
Life: 11 Lact 197389 3.8 7588 3.3 6559

6th Dam

Crawford Chief Muriel VG-85 VG-MS-CAN

11-11 2x 303d 20326 3.8 767 3.4 692

Life: 9 Lact 156216 3.8 5862 3.5 4857

- *1st 4-Yr-Old Cow Maritime Spring 1983*



CHERRY CREST LYSTER GOLDEN EX-95 3E
Nom All-American & All-Canadian 5-Yr-Old Cow 2009
DAM OF LOTS 47, 48, 49 & 50

GOLDEN!

- National Elite Performer
- 2nd Aged Cow Midwest Sprg/Nat 2011
- 2nd 125,000 Lb Cow WI Championship 2011
- 6th 125,000 Lb Cow International Show 2011
- Nom All-American & All-Canadian 5-Yr-Old 2009
- 4th 5 Yr-Old Cow International Show 2009
- 7th 5-Yr-Old Cow Royal Winter Fair 2009
- 3rd 4-Yr-Old Cow Midwest Sprg/Nat 2008

Lot 47

MILKSOURCE DOORMAN GEM-ET

3130675981 99%RHA-I
 Born: September 1, 2015

Val-Bisson Doorman-ET

CAN 107281711 VG-87-CAN *TV *TL *TY *TD
 PTA -49M +27F +21P 93R 12/15
 PTA +3.0PL 2.58SCS -0.6DPR 5.2%DCE
 PTA +3.26T +2.23UDC +1.96FLC 90R 12/15
 GTPI +2262G

Cherry Crest Lyster Golden

CAN 9507324 Excellent-95 EEEEE 3E
 7-04 2x 365d 43610 4.6 2013 2.9 1284
 9-05 2x 365d 37040 5.2 1908 3.2 1187
 5-06 2x 305d 36420 4.3 1591 3.2 1174
 4-03 2x 365d 35360 4.1 1451 3.1 1086
 2-06 2x 365d 30000 4.1 1221 3.1 941
 Life: 1996d 201450 4.5 9041 3.1 6322

De-Su 521 Bookem-ET

66636657 Very Good-88 GM 8/15 *TR *TV *TL *TY
 PTA +1347M +29F +50P 99R 12/15
 PTA +1.66T +1.12UDC +1.15FLC GTPI +2341G

Val-Bisson Shottle Imelda

CAN 106173432 VG-89 EVEV-CAN *2 STAR
 1-11 2x 365d 25531 4.2 1076 3.7 957

TCET Lyster

CAN 6487689 EX-CAN ST'00 *TV *TL
 PTA -414M -37F -14P 99R 12/15
 PTA +.24T -.37UDC +.99FLC GTPI +1217G

Glenrapha Kaitland

CAN 7061549 VG-86 VG-MS-CAN *4 STAR
 7-08 2x 365d 30446 3.8 1162 3.0 922
 4-06 2x 365d 27952 4.2 1168 3.0 833
 5-08 2x 365d 26773 4.0 1078 3.0 807
 Life: 1768d 126954 4.2 5271 3.0 3846

LOT 48 - MILKSOURCE ATWOOD GAIL-ET

3130675971 • Born: July 1, 2015

Maple-Downs-I G W Atwood-ET x Golden

LOT 49 - MILKSOURCE DOORMAN GUESS-ET

31306756008 • Born: October 23, 2015

Val-Bisson Doorman-ET x Golden

LOT 50 - MILKSOURCE DM GINGERSNAP-ET

3130676028 • Born: December 8, 2015

Val-Bisson Doorman-ET x Golden

3rd Dam

Glenrapha Kacey VG-85-CAN

5-04 2x 353d 22152 3.9 869 3.3 730



HAMMERTIME NONIBERRY-RED
Nominated All-American R&W Fall Heifer Calf 2013
SELLS AS LOT 51

NONIBERRY!

- *Nom All-American R&W Fall Heifer Calf 2013*
- *Jr Champion WI Championship R&W Show 2013*
- *5th Fall Calf International R&W Show 2013*
- *Res Jr Champion WI District 5 Show 2013*

Lot 51

HAMMERTIME NONIBERRY-RED

142432640 Very Good-85 VG-MS @ 3-03
 Born: September 7, 2012
 2-07 2x 292d 17850 4.5 800 3.5 621

Due: April 10, 2016 to Blondin Lotus-ET
 534H018

Valleyriver Ruben Redmn-Red-ET

CAN 10646281 EX-CAN *TV*TL
 PTA -1093M -27F -17P 99R 12/15
 PTA +.56T +1.26UDC -.89FLC GTPI +1473G

Sunspark R Marker Dolly

CAN 9309434 VG-86-CAN *2 STAR *RC
 4-03 2x 365d 28205 4.0 1139 3.2 901

Orbe-View S Strm Hvezda-ET

52760801 *TV*TL*TY*TD
 PTA -96M -15F +3P 99R 12/15
 PTA +1.90T +.84UDC +1.85FLC GTPI +1570G

Mell-Wood Rubens Nicolette

136102269 Excellent-90 EEEV
 3-04 2x 305d 29710 3.6 1072 3.0 878
 4-08 2x 305d 27540 3.6 992 3.0 826
 5-11 2x 283d 24910 3.7 934 3.0 738
 8-09 2x 305d 20680 3.1 637 2.8 588
 2-05 2x 280d 20070 3.6 713 3.0 599
 Life: 2004d 161880 3.5 5696 3.0 4843

Patience Showline Contender-Red

CAN 7483577 EX-95-CAN ST'10 *TV*TL
 PTA -2379M -53F -63P 98R 12/15
 PTA +3.2PL 2.69SCS +2.6DPR 8.3%DCE
 PTA +1.70T +2.12UDC +1.05FLC 99R 12/15
 TPI +1473M

Mell-Wood Hvezda Nala-Red

141059334 Very Good-88 EX-MS @ 3-09
 3-06 2x 305d 34890 3.1 1093 3.3 1159

3rd Dam

Mell-Wood Leduc Nona GP-84
 6-01 2x 318d 26280 3.3 869 2.9 755
 Life: 1499d 116340 3.4 3963 2.9 3357

4th Dam

Mell-Wood Storm Nuisance VG-85 VG-MS
 2-06 2x 365d 32890 3.5 1159 2.9 956

5th Dam

Mell-Wood Luke Nelly GP-83
 3-00 2x 365d 31870 3.4 1082 2.9 940

6th Dam

Mell-Wood Thor Nettie VG-85
 4-05 2x 363d 31740 3.9 1235 3.0 960

7th Dam

Mell-Wood Elevation Nuttie EX-90 2E GMD
 5-04 2x 365d 29640 3.8 1131 2.7 808
 Life: 3163d 212910 3.8 8179 2.7 5126

8th Dam

Mell-Wood Pilot Nelly EX-90 2E DOM
 7-11 2x 365d 23540 3.9 916
 Life: 3376d 191950 4.0 7743

9th Dam

Mell-Wood Fobes Skokie VG-86 VVVV
 Life: 2523d 115940 3.8 4372



MILKSOURCE REDBRST ALMA-RED VG-86
SELLS AS LOT 52

ALMA!

- 4th Sr 2-Yr-Old Cow WI District 7 Show 2015
- 5th Sr 2-Yr-Old Cow WI Spring R&W Show 2015

Lot 52

MILKSOURCE REDBRST ALMA-RED

72230129 Very Good-86 VG-MS @ 2-06
Born: January 22, 2013
2-01 2x 297d 20560 4.3 856 3.2 668
3-00 2x 18d 1820 5.8 107 3.4 61 RIP

Fresh: February 4, 2016

Scientific Destry-ET

138122625 Excellent-92 *RC *TV *TL *TY
PTA -675M -21F +0P 99R 12/15
PTA +2.04T +2.18UDC +.51FLC GTPI +1958G

Regancrest MB Breyell-ET

63606863 VG-87-CAN *RC *3 STAR
2-03 2x 365d 31876 3.1 994 3.1 992
4-03 2x 315d 29672 3.3 990 3.1 915

Patience Showline Contender-Red

CAN 7483577 EX-95-CAN ST'10 *TV *TL
PTA -2379M -53F -63P 98R 12/15
PTA +1.70T +2.12UDC +1.05FLC TPI +1473M

Miss Advent Adoration

137629688 Excellent-90 EEVVE *RC
5-03 2x 365d 43230 3.7 1587 2.9 1261
2-01 2x 365d 30590 3.9 1194 3.0 925
3-05 2x 307d 27940 3.3 913 2.9 798
Life: 1141d 108380 3.7 3958 3.0 3201

Lookout P Redburst-Red-ET

CAN 106030980 *TV *TL *TY
PTA -150M -6F +7P 98R 12/15
PTA +2.2PL 3.00SCS +4.2DPR 6.4%DCE
PTA +2.22T +2.02UDC +1.57FLC 98R 12/15
GTPI +2086G

Milksource CR Annete-Red-ET

66681428 Very Good-87 VG-MS
4-07 2x 294d 24940 3.6 903 2.9 731
2-04 2x 268d 17180 4.0 688 2.9 496

3rd Dam

Ms BMS Durable Adorable-ET EX-93 2E
4-04 2x 348d 32647 4.5 1460 3.2 1058

4th Dam

BKB Alexis Lee-ET EX-91 EEEEE 2E *TL
5-04 2x 365d 33200 4.7 1559 3.4 1113

5th Dam

Shoremar S Alicia-ET EX-97 EEEEE 3E
6-10 2x 365d 35760 4.3 1544 3.4 1214
Life: 1596d 147400 4.3 6265 3.4 5012

- HHM All-Time All-American 5-Yr-Old Cow
- HHM All-American 125,000 Lb. Cow 2005

6th Dam

C Aitkenbrae Starbuck Ada EX-94 2E DOM
13-8 2x 365d 25150 3.0 764 3.4 843

- Res All-Time All-American Sr 3-Yr-Old
- All-American 3-Yr-Old Cow 1990



LUCK-E DUNDEE JENNA EX-95 3E
Nominated All-American & All-Canadian 4-Yr-Old Cow 2010
DAM OF LOTS 53 THRU 58 & 2ND DAM OF LOT 59

JENNA!

- *All-Wisconsin Aged Cow 2012*
- *1st Aged Cow Mid-West Sprg/Nat 2012*
- *Nom All-American 4-Yr-Old Cow 2010*
- *Nom All-Canadian 4-Yr-Old Cow 2010*
- *6th 4-Yr-Old Cow International & Royal 2010*
- *Int Champion NAILE 2009*
- *Nom All-American Winter Yrlg Heifer 2007*

Lot 53

MILKSOURCE SID JEWEL-ET

73200964
 Born: December 12, 2014

Pine-Tree Sid-ET

62175895 VG-86-CAN ST'10 *TV *TY
 PTA -464M +5F -8P 99R 12/15
 PTA -1.5PL 2.84SCS -3.9DPR 6.3%DCE
 PTA +2.15T +1.97UDC +.08FLC 99R 12/15
 GTPI +1621G

Luck-E Dundee Jenna

62637079 Excellent-95 EEEEE 3E
 4-09 2x 365d 36830 3.4 1243 3.1 1154
 6-03 2x 331d 36541 3.9 1434 3.0 1102
 3-10 2x 306d 32250 3.2 1046 2.9 945
 2-04 2x 289d 22750 3.5 798 2.8 644
 Life: 1443d 139000 3.6 5033 3.1 4249

Regancrest-MR Drham Sam-ET

207184639 GM 8/06 ST'08 *TR *TV *TL
 PTA -459M +3F -10P 99R 12/15
 PTA +.48T +.33UDC +.89FLC GTPI +1477G

Pine-Tree Finley Minnie-ET

61733050 Excellent-90 VVEVE DOM *5 STAR
 6-10 2x 354d 38565 4.0 1541 3.1 1179
 Life: 3 Lact 103596 3.5 3706 3.2 3322

Regancrest Dundee-ET

127640114 Excellent-95 *TV *TL *TY
 PTA -660M -36F 017P 99R 12/15
 PTA +1.12T +1.40UDC +.09FLC GTPI +1382G

Logganlane Leduc Jennifer-ET

CAN 8481342 Excellent-91 EEEVE 2E
 4-00 2x 346d 33100 3.7 1229 3.0 979
 5-02 2x 349d 30350 3.5 1069 3.1 943
 6-04 2x 305d 29700 3.6 1059 3.0 878
 Life: 1889d 158800 3.9 6241 3.1 4922

LOT 54 - MILKSOURCE SID JILLIAN-ET

73200985 • Born: March 3, 2015
Pine-Tree Sid-ET x Jenna

LOT 55 - MILKSOURCE SID JILL-ET

3130675982 • Born: September 2, 2015
Pine-Tree Sid-ET x Jenna

LOT 56 - MILKSOURCE SID JESSA-ET

313675989 • Born: September 3, 2015
Pine-Tree Sid-ET x Jenna

LOT 57 - MILKSOURCE DOORMAN JULIET-ET

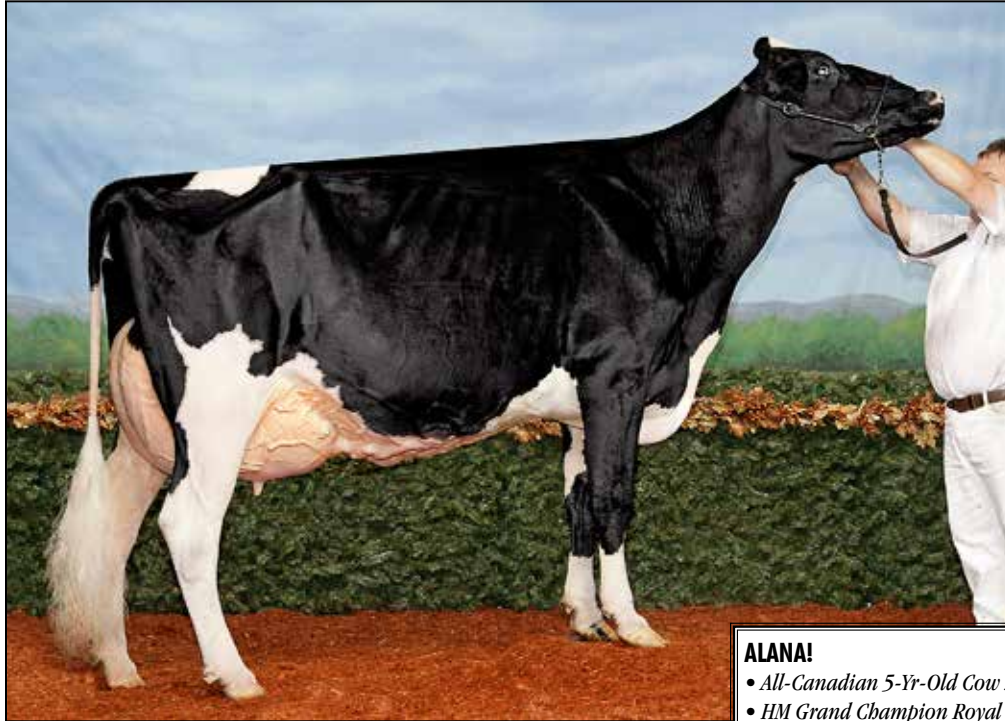
3130676000 • Born: September 11, 2015 99%RHA
Pine-Tree Sid-ET x Jenna

LOT 58 - MILKSOURCE DOORMAN JOSIE-ET

3130676002 • Born: September 13, 2015 99%RHA
Pine-Tree Sid-ET x Jenna

LOT 59 - MILKSOURCE MCCUTCHEN JACKIE

73200941 • Born: September 2, 2014
Dam: Milksource G Chip Janae-ET GP-82
 2-02 2x 325d 21650 4.1 885 3.1 664
 Bred: Feb. 18, 2016 to Mr Atwoods Brokaw-ET



MS GOLDWYN ALANA-ET EX-96-CAN
All-Canadian 5-Yr-Old Cow 2013
3RD DAM OF LOT 60

ALANA!

- *All-Canadian 5-Yr-Old Cow 2013*
- *HM Grand Champion Royal Winter Fair 2013*
- *1st 5-Yr-Old Cow Royal Winter Fair 2013*
- *Grand Champion Quebec International 2013*
- *All-Wisconsin Jr 3-Yr-Old Cow 2011*

Lot 60

MILKSOURCE DOORMAN ALI

3130675973 99%RHA-I
 Born: July 18, 2015

Val-Bisson Doorman-ET

CAN 107281711 VG-87-CAN *TV *TL *TY *TD
 PTA -49M +27F +21P 93R 12/15
 PTA +3.0PL 2.58SCS -0.6DPR 5.2%DCE
 PTA +3.26T +2.23UDC +1.96FLC 90R 12/15
 GTPI +2262G

Milksource Shamrock Angela

72230165 Very Good-87 VVVVE @ 2-06
 2-01 2x 219d 16320 4.5 740 3.3 543 RIP

De-Su 521 Bookem-ET

66636657 Very Good-88 GM 8/15 *TR *TV *TL *TY
 PTA +1347M +29F +50P 99R 12/15
 PTA +1.66T +1.12UDC +1.15FLC GTPI +2341G

Val-Bisson Shottle Imelda

CAN 106173432 VG-89 EVEV-CAN *2 STAR
 1-11 2x 365d 25531 4.2 1076 3.7 957

Ladys-Manor PL Shamrock-ET

68977120 Very Good-88 GM 12/14 *TR *TV *TL *TY
 PTA +1077M +40F +18P 99R 12/15
 PTA +1.03T +1.15UDC +.06FLC GTPI +2275G

Milksource Aftershock Ada

70721179 Excellent-90 EEVVE @ 3-06
 2-00 2x 331d 24590 4.1 1014 3.3 800
 3-01 2x 269d 22310 4.0 886 3.2 719

3rd Dam

Ms Goldwyn Alana-ET EX-96 EEEE-CAN
 4-10 2x 365d 37042 4.3 1592 3.6 1325

4th Dam

Shormar BKB S Alicia 2-ETN EX-94 EEEEE 2E *BL
 6-01 2x 365d 39380 4.1 1603 3.2 1264
 Life: 1154d 101330 3.9 3986 3.2 3244

- *2nd 4-Yr-Old Cow Mid-West Sprg/Nat 2007*

5th Dam

C Aitkenbrae Starbuck Ada EX-94 2E DOM
 13-8 2x 365d 25150 3.0 764 3.4 843
 Life: 1554d 105150 3.4 3600 3.4 3554

- *All-American Produce of Dam 2000, 2001*
- *Res All-Time All-American Sr 3-Yr-Old*
- *All-American 3-Yr-Old Cow 1990*
- *Grand Champion Eastern National 1990*



SILVERMAPLE DAMION CAMOMILE EX-95
All-American & All-Canadian Jr.3-Yr-Old Cow 2011
2ND DAM OF LOT 61

CAMOMILE!

All-Canadian Jr.3-Yr-Old Cow, Jr.2-Yr-Old Cow
All-American Jr.3-Yr-Old Cow, Jr.2-Yr-Old Cow
Grand Champion BC Spring Show 2012
Int Champion Royal Winter Fair 2011
Int Champion International Show 2011
Res Grand Champion International Show 2011

Lot 61

MILKSOURCE DOORMAN CARMEN

3130675944 99%RHA-I
 Born: June 4, 2015

Val-Bisson Doorman-ET

CAN 107281711 VG-87-CAN *TV *TL *TY *TD
 PTA -49M +27F +21P 93R 12/15
 PTA +3.0PL 2.58SCS -0.6DPR 5.2%DCE
 PTA +3.26T +2.23UDC +1.96FLC 90R 12/15
 GTPI +2262G

Wedgwood Atwood Camomile-ET

CAN 11723857 Very Good-88 EX-MS @ 2-08
 2-01 2x 263d 17920 4.2 758 3.1 569 RIP

De-Su 521 Bookem-ET

66636657 Very Good-88 GM 8/15 *TR *TV *TL *TY
 PTA +1347M +29F +50P 99R 12/15
 PTA +1.66T +1.12UDC +1.15FLC GTPI +2341G

Val-Bisson Shottle Imelda

CAN 106173432 VG-89 EVEV-CAN *2 STAR
 1-11 2x 365d 25531 4.2 1076 3.7 957

Maple-Downs-I G W Atwood-ET

CAN 8956379 Excellent-90 *TR *TV *TL *TY
 PTA -34M +29F +3P 99R 12/15
 PTA +3.78T +2.64UDC +2.97FLC GTPI +1952G

Silvermaple Damion Camomile

CAN 9732453 Excellent-95 EEEEE
 3-03 2x 365d 32268 4.1 1327 3.4 1098
 5-02 2x 305d 30450 4.1 1262 3.1 946
 2-03 2x 313d 20119 4.0 795 3.3 667
 Life: 1362d 113197 4.3 4820 3.4 3793

3rd Dam

Stanhope Camila Goldwyn-ET VG-85-CAN
 4-01 2x 365d 30461 4.9 1486 3.3 1010

4th Dam

Kendu Triumphant Charity EX-93 EEEE *3 STAR
 3-04 2x 365d 28519 3.7 1065 3.1 888
 • *HM Grand Champion Vancouver Island 2006*
 • *3rd 4-Yr-Old Cow Saskatoon Expo 2005*
 • *3rd 4-Yr-Old Cow Central Fraser Valley 2005*



MILKSOURCE LEWIS AUBURN EX-92
DAM OF LOT 62

AUBURN!

2nd Fall Yrlg Heifer WI Jr State Fair 2012
1st Fall Yrlg Heifer WI District 7 Show 2012

Lot 62

MILKSOURCE BARRY ABBY

3130675978
Born: August 1, 2015

Askew-Janes Barry-ET

137205947 *TR *TV *TL *TY
PTA -313M +8F -7P 96R 12/15
PTA -1.7PL 2.87SCS -1.3DPR 8.6%DCE
PTA +.46T +.78UDC +.29FLC 86R 12/15
TPI +1587

Milksource Lewis Auburn

69592236 Excellent-92 EEEEE
3-05 2x 332d 29900 3.4 1004 2.9 872
2-00 2x 316d 22490 3.7 839 3.0 669

Picston Shottle-ET

GBR 598172 EX-95-GBR GM 12/11 *TV *TL
PTA +511M +27F +11P 99R 12/15
PTA +1.22T +.88UDC +.72FLC GTPI +1937G

Diamond-Oak Bwm Amanda-ET

132046756 Very Good-85 VG-MS GMD DOM *TL
2-03 3 365d 37520 4.4 1665 3.3 1229

Calbrett Lewis-ET

CAN 79781156 *TV *TL *TY
PTA -440M -27F -7P 97R 12/15
PTA +1.04T +1.25UDC +1.89FLC GTPI +1708G

Milksource Pronto Annika

65747329 Very Good-86 VG-MS @ 2-11
2-01 2x 302d 23230 3.1 711 2.8 658

Maternal sister to Annika

Milksource Goldwn Africa-ET EX-95 EEEEE

- Res All-Canadian Mature Cow 2014
- Grand Champion WI Championship 2012, 2014

3rd Dam

Butz-Butler Durham Angel-ET EX-90 EVVVE *TV

4-10 2x 333d 37620 3.6 1344 3.1 1161

4th Dam

EO Siemers Ashlyns Angel-ET EX-96 2E GMD

4-03 2x 365d 41370 4.2 1749 3.1 1277

- HHM All-American Aged Cow 2010
- HM All-Canadian Mature Cow 2010
- Nom All-American 4-Yr-Old Cow 2008
- Reserve All-American Sr 2-Yr-Old Cow 2006
- All-American Winter Yearling 2005

5th Dam

Tri-Day Ashlyn-ET EX-96 2E GMD DOM

4-09 2x 365d 43090 4.8 2079 3.5 1503

Life: 1374d 144770 4.6 6665 3.5 5135

- All-Time All-American 4-Yr-Old Cow
- HHM All-Time All-American Sr 3-Yr-Old Cow
- All-American & All-Canadian 4-Yr-Old Cow 2001
- Supreme Champion World Dairy Expo 2001
- All-American Sr 3-Yr-Old Cow 2000
- Res All Canadian Sr 3-Yr-Old Cow 2000

6th Dam

Bendy-Brook Odyssey Favorite EX-92 2E DOM

6-01 2x 337d 22670 3.4 770 3.1 706

- Res All-American Produce of Dam 2001
- Nom Jr All-American Aged Cow 1995



PAMADA WILDMAN LOR BABY-ET EX-92
HHM All-American Spring Yrlg Heifer 2008
2ND DAM OF LOT 63

BABY!

- HHM All-American Spring Yrlg Heifer 2008
- 2nd Spring Yrlg Heifer International Show 2008
- 2nd Jr 2-Yr-Old Cow Mid-West Sprg/Nat 2009

Lot 63

MILKSOURCE TAZ BANK ROLE

3130676010
Born: November 10, 2015

MilkSource Taz-Red-ET

71251985 Very Good-85
PTA -710M -16F -11P 76R 12/15
PTA -0.8PL 3.09SCS +1.5DPR
PTA +2.49T +1.94UDC +1.56FLC 75R 12/15
GTPI +1738G

MilkSource Damin Belinda-ET

71251897 Very Good-87 VVVV @ 3-00
2-02 2x 365d 26520 3.0 797 3.0 808

Lookout P Redburst-ET

CAN 106030980 *TV *TL *TY
PTA -150M -6F +7P 98R 12/15
PTA +2.22T +2.02UDC +1.57FLC GTPI +2086G

Silvermine Adv Tally-Red-ET

138294193 Excellent-93 EX-MS 2E *TD
5-05 2x 365d 38700 4.2 1621 3.2 1254
Life: 1266d 108890 4.3 4730 3.3 3564

Erbacres Damion

130263722 Excellent-96 *TR *TV *TL *TY
PTA -850M -70F -13P 99R 12/15
PTA +2.09T +1.12UDC +2.29FLC GTPI +1461G

Pamada Wildman Lor Baby-ET

CAN 104484898 Excellent-92 EEEVE @ 4-03
3-07 2x 365d 41530 3.1 1281 2.7 1138
2-00 2x 365d 32800 3.2 1042 2.7 897

3rd Dam

Pamada Champion Lorbee VG-85 VG-MS-CAN

5-05 2x 365d 30849 3.2 990 3.0 939
Life: 4 Lact 129593 3.4 4422 3.1 4059

4th Dam

R-Way-I Gibson Loranza VG-88 VVEV *2 STAR

2-03 2x 365d 30362 4.0 1199 3.4 1021
Life: 4 Lact 137366 3.7 5110 3.2 4392

5th Dam

Lystel Lornie SkychiefEX-CAN *2 STAR

9-01 2x 352d 34043 3.6 1367 3.0 1118
Life: 4 Lact 143107 3.6 5115 3.1 4381

- 1st 4-Yr-Old Cow Drummond 2003

6th thru 9th Dams

Lystel Loriane Starbuck VG-86-2YR-CAN

4-04 2x 365d 37472 4.3 1609 3.1 1151
• 3rd Sr Yrlg Heifer Royal Winter Fair 1998

Comestar L Or Black-ET VG-87-CAN *16 STAR

3-11 2x 365d 35745 3.7 1325 3.1 1124

Comestar Laurie Sheik-ET VG-88-CAN *23 STAR

6-09 2x 365d 29864 4.5 1329 3.4 1016
Life: 4 Lact 106554 4.5 4780 3.6 3885

- HM All-Canadian Sr 2 Yr Old Cow 1989
- HM All-American Sr 2 Yr Old Cow 1989

Elysa Anthony Lea EX-CAN *15 STAR

6-02 2x 365d 35770 3.9 1398 2.9 1049



MS KEN-DREN SANCHEZ FEATHER EX-94
DAM OF LOT 64

FEATHER!

- 3rd Jr 2-Yr-Old Cow International Show 2012
- 8th Jr 3-Yr-Old Cow International Show 2013
- 8th Jr 3-Yr-Old Cow Winter Royal Fair 2013

Lot 64

MILKSOURCE DUNDEE FLAME-ET

73200956
Born: October 9, 2014

Due: Sept. 19, 2016 to Oh-River-Syc Byway-ET
200H010036 Ultrasound Female

Regancrest Dundee-ET

127640114 Excellent-95 *TV *TL *TY
PTA -660M -36F -17P 99R 12/15
PTA -3.5PL 3.16SCS -0.6DPR 10.4%DCE
PTA +1.12T +1.40UDC +.09FLC 99R 12/15
GTPI +1382G

Ms Ken-Dren Sanchez Feather

141108784 Excellent-94 EEEEE *TL *TD
3-05 2x 365d 32610 3.6 1183 3.2 1045
2-03 2x 365d 26630 3.8 1013 3.3 874

Marcrest Encore

2048702 Excellent-96 GM 2/99 *TV *TL
PTA -1060M -33F -34P 99R 12/15
PTA +.17T -.21UDC -.84FLC GTPI +1086G

Snow-N Denises Dellia

12895802 Excellent-95 2E GMD DOM *TV *TL
6-00 2x 365d 35230 4.0 1425 3.0 1049
Life: 2558d 180240 3.9 7108 3.2 5723

Gen-Mark Stimatic Sanchez

134422312 Excellent-94 *TR *TV *TL *TY
PTA +509M -16F +8P 99R 12/15
PTA +1.98T +1.10UDC +1.80FLC GTPI +1640G

Jeffana Throne Faucett-ET

61369102 Very Good-88 VVVVE @ 3-08
2-02 2x 365d 33360 3.5 1171 3.0 1007
4-05 2x 365d 24390 3.9 957 3.4 832

3rd Dam

To-Mar Durham Floral-ET EX-91 EEEVE DOM *TV
4-11 2x 365d 37598 4.4 1639 3.3 1239

4th Dam

C Plushanski Bstar Flute-ET EX-92 2E GMD DOM
6-00 2x 365d 37430 4.9 1818 3.6 1360
Life: 1892d 140460 4.7 6588 3.8 5393

• Sons in AI • Embryos exported worldwide
5th Dam

Plushanski Neil Flute VG-87 VEVV GMD DOM
5-02 2x 365d 35145 5.2 1828 3.4 1193
Life: 1372d 102372 5.2 5353 3.6 3672

6th Dam

Plushanski Job Fancy VG-87 VG-MS GMD DOM
4-11 2x 305d 32590 4.4 1426 3.4 1098
Life: 1220d 109080 4.7 5080

7th Dam

Plushanski Chief Faith EX-94 EEEE 4E GMD
9-01 2x 305d 33840 5.0 1687
Life: 2135d 195750 4.5 8825



AMLAIIRD LEE ALICE-ET EX-94 2E
All-American Jr 2-Yr-Old Cow 2003
2ND DAM OF LOT 65

ALICE!

- *All-American Jr 2-Yr-Old Cow 2003*
- *1st Jr 2-Yr-Old Cow International Show 2003*
- *All-Wisconsin Jr 2-Yr-Old Cow 2003*
- *1st Jr 2-Yr-Old Cow Wisconsin State Fair 2003*

Lot 65

MILKSOURCE DM ACCELERATE-ET

73200980
 Born: March 2, 2015

Erbacres Damion

130263722 Excellent-96 *TR *TV *TL *TY
 PTA -850M -70F -13P 99R 12/15
 PTA -1.0PL 3.13SCS -1.0DPR 7.2DCE
 PTA +2.09T +1.12UDC +2.29FLC 99R 12/15
 GTPI +1461G

Amlaird Lee Alice-ET

CAN 7293258 Excellent-94 EEEEE 2E *TL
 7-05 2x 365d 36980 5.0 1837 3.2 1186
 4-02 2x 365d 31530 4.8 1500 3.4 1067
 2-03 2x 365d 23680 4.4 1034 3.3 779
 Life: 2059d 129610 4.8 6177 3.3 4334

Regancrest Elton Durham-ET

2250783 Excellent-90 GM 8/01 *TR *CV *TL
 PTA -694M -50F -8P 99R 12/15
 PTA +1.49T +1.30UDC +1.29FLC GTPI +1527G

Regancrest Encore Dalhia-ET

124287356 Very Good-89 EEEEE
 2-01 2x 365d 29250 3.3 971 3.1 913
 3-11 2x 365d 26340 3.6 942 3.0 790

Comestar Lee-ET

5757117C EX-CAN GM 8/03 *TV *TL
 PTA -766M +5F -16P 99R 12/15
 PTA +.20T -.23UDC +.24FLC GTPI +1382G

Ms Kingstead Chief Adeen-ET

17302711 EX-94 2E DOM
 3-05 2x 310d 30180 4.0 1209 3.6 1077
 6-04 2x 365d 28820 4.1 1191 3.5 1013
 Life: 1382d 100760 4.0 4010 3.6 3649
 • *Nom All-American Jr 3-Yr-Old Cow 2000*
 • *Nom All-American 4-Yr-Old Cow 2001*
 • *Member All-American Produce 2000 & 2001*

3rd Dam

C Aitkenbrae Starbuck Ada EX-94 2E DOM

13-8 2x 365d 25150 3.0 764 3.4 843
 Life: 1554d 105150 3.4 3600 3.4 3554
 • *All-American Produce of Dam 2000, 2001*
 • *Res All-Time All-American Sr 3-Yr-Old*
 • *All-American 3-Yr-Old Cow 1990*
 • *Grand Champion Eastern National 1990*

LIATRIS BROKAW TOUTOUNE

CAN 108499022 Very Good-88 EEVW @ 2-03
 Born: September 1, 2013 98%RHA-NA
 1-10 2x 219d 17781 3.4 597 3.1 551 RIP

- 2nd Fall Yrlg Heifer Midwest Sprg/Nat 2015
- 5th Milking Yrlg Heifer Midwest Fall/Nat 2015
- 4th Fall Heifer Calf Midwest Sprg/Nat 2014

Mr Atwood Brokaw-ET

140602463 Very Good-86 *TR *TV *TL *TY
 PTA -199M +17F +11P 97R 12/15
 PTA -2.1PL 3.16SCS -0.8DPR 8.4%DCE
 PTA +3.25T +2.97UDC +1.74FLC 95R 12/15
 GTPI +1945G

Pierstein Toy Toonie

CAN 105962829 VG-85 VG-MS-CAN *RC
 4-02 2x 307d 23442 3.7 875 3.2 758
 5-02 2x 313d 23208 3.5 776 3.2 728

Maple-Downs-I G W Atwood-ET

CAN 8956379 Excellent-90 *TR *TV *TL *TY
 PTA -34M +29F +3P 99R 12/15
 PTA +3.78T +2.64UDC +2.97FLC GTPI +1952G

Regancrest Mac Bikasa-ET

63606799 Very Good-87 VVVV GMD
 2-02 2x 365d 29240 3.9 1144 3.1 912

Erbacres Monitor

1916644
 PTA -1989M -74F -69P 39R 12/15
 PTA -2.37T -1.94UDC -.90FLC PTPI +872

Pierstein Rubens Tonya-ET

CAN 103797064 VG-87 VVEV-CAN
 3-05 2x 365d 26548 4.0 1063 3.4 897

3rd Dam

Kingsway Rubens Toonie VG-88-2YR-CAN

2-07 2x 365d 23303 4.8 1109 3.4 796

- All-Canadian Sr 2-Yr-Old Cow 2005
- All-Quebec Sr 2-Yr-Old Cow 2005
- 1st Sr 2-Yr-Old Cow Royal Winter Fair 2005
- 1st Sr 2-Yr-Old Cow Eastern Championship 2005
- 1st Sr 2-Yr-Old Cow Berthier 2005

4th Dam

Kingsway R Marker Loonie VG-87 VG-MS-CAN

2-03 2x 305d 16036 4.3 692 3.3 522

5th Dam

Kingsway Leader Lucky GP-82

4-05 2x 327d 18045 4.5 820 3.4 606

6th Dam

Joalmac Leanne VG-88 VVEV-CAN *2 STAR

6-09 2x 324d 23523 3.3 780 3.2 752

Life: 6 Lact 113133 3.4 3770 3.3 3689

7th Dam

Joalmac Stylist Liz VG-85 VG-MS-CAN

4-09 2x 365d 22895 3.7 851 3.3 750

MILKSOURCE REGINALD TIARA

3130675974 99%RHA-NA
 Born: July 19, 2015

Regancrest Reginald-ET

62496439 *TY
 PTA -40M +21F +8P 97R 12/15
 PTA -2.5PL 2.06SCS -0.3DPR 6.8%DCE
 PTA +2.39T +2.22USC +.87FLC 96R 12/15
 GTPI +1905G

Liatris Brokaw Toutoune

CAN 108499022 Very Good-88 EEVW @ 2-03
 1-10 2x 219d 17781 3.4 597 3.1 551 RIP
 • 2nd Fall Yrlg Heifer Midwest Sprg/Nat 2015
 • 5th Milking Yrlg Heifer Midwest Fall/Nat 2015
 • 4th Fall Heifer Calf Midwest Sprg/Nat 2014

Braedale Goldwyn

CAN 10705608 GP-CAN GM 12/11 *TV *TL
 PTA -371M +13F +1P 99R 12/15
 PTA +1.81T +1.51UDC +1.53FLC GTPI +1882G

Regan-Joy Durham Regenia-ET

207184723 Excellent-92 EEEEE GMD DOM *TV
 3-05 2x 365d 37880 3.6 1374 3.5 1316
 2-04 2x 365d 28260 4.1 1163 3.4 962

Mr Atwood Brokaw-ET

140602463 Very Good-86 *TR *TV *TL *TY
 PTA -199M +17F +11P 97R 12/15
 PTA +3.25T +2.97UDC +1.74FLC GTPI +1945G

Pierstein Toy Toonie

CAN 105962829 VG-85 VG-MS-CAN *RC
 4-02 2x 307d 23442 3.7 875 3.2 758
 5-02 2x 313d 23208 3.5 776 3.2 728

3rd Dam

Pierstein Rubens Tonya-ET VG-87 VVEV-CAN

3-05 2x 365d 26548 4.0 1063 3.4 897

4th Dam

Kingsway Rubens Toonie VG-88-2YR-CAN

2-07 2x 365d 23303 4.8 1109 3.4 796

- All-Canadian Sr 2-Yr-Old Cow 2005
- All-Quebec Sr 2-Yr-Old Cow 2005
- 1st Sr 2-Yr-Old Cow Royal Winter Fair 2005
- 1st Sr 2-Yr-Old Cow Eastern Championship 2005
- 1st Sr 2-Yr-Old Cow Berthier 2005

5th Dam

Kingsway R Marker Loonie VG-87 VG-MS-CAN

2-03 2x 305d 16036 4.3 692 3.3 522

6th Dam

Kingsway Leader Lucky GP-82

4-05 2x 327d 18045 4.5 820 3.4 606

7th Dam

Joalmac Leanne VG-88 VVEV-CAN *2 STAR

6-09 2x 324d 23523 3.3 780 3.2 752

Life: 6 Lact 113133 3.4 3770 3.3 3689

8th Dam

Joalmac Stylist Liz VG-85 VG-MS-CAN

4-09 2x 365d 22895 3.7 851 3.3 750

INDEX



Lot	Name	Page
1	FIRST CHOICE FEMALE - LOVHILL GOLDWYN KATRYSHA	2
2	FIRST CHOICE FEMALE - CHARWILL ATTIC MARCY	3
3	FIRST CHOICE FEMALE - STRANS-JEN-D TEQUILA-RED-ET	4
4	FIRST CHOICE FEMALE - MUSQIE IATOLA MARTHA-ET	5
5	MILKSOURCE RT SECRET-RED-ET	6
6	MILKSOURCE SYMP SHAY-RED-ET	6
7	MILKSOURCE LTS SALLY-RED-ET	6
8	MILKSOURCE ARMANI SILVER	6
9	MILKSOURCE DEFINT SILLY-RED	6
10	MILKSOURCE DOORMAN LASHES	7
11	MILKSOURCE DMAN LEGEND-ET	7
12	MILKSOURCE ARCH LINKEDIN-ET	7
13	MILKSOURCE ARCHRIVL LEGO-ET	7
14	MORSAN MISS WONDER-ETS	8
15	MILKSOURCE NUMERO UNO WISH	8
16	KHW REGMENT APPLE B-RED-ETN	9
17	MILKSOURCE DT AMAZON-RED-ET	9
18	MILKSOURCE DEFIANT ANDY-ET	9
19	JOLIBOIS FLORIA CONTEND-RED-ET	10
20	MILKSOURCE DESTIND LUCK-RED	11
21	MILKSOURCE WIRE RACKET-RED	12
22	OVALTOP RLTY RONNIE-RED-ET	13
23	MILKSOURCE CT TASMINE-RED-ET	14
24	MILKSOURCE RODDIE TESSA	14
25	MILKSOURCE DEFNT TIFFANY-ET	14
26	MILKSOURCE DEFNT TIERNEY-ET	14
27	MILKSOURCE DT TICTAC-RED-ET	14
28	MILKSOURCE DEF TALLADEGA-ET	14
29	MILKSOURCE GOLDWYN TEA-ET	14
30	MILKSOURCE G TRAVERSE-TW-ET	14
31	MILKSOURCE BARRY CHELSEA-TW	15
32	MILKSOURCE ASK ME OUT-ET	16
33	MILKSOURCE SID APRIL-ET	16
34	KINGSWAY TENACIOUS ROCHELLE	17
35	MILKSOURCE GOLD RING	17
36	MILKSOURCE DOORMAN BRANDY-ET	18
37	MILKSOURCE DOORMAN BINGO-ET	18
38	MD-DUN-LOAFIN LAUT ELLS-ET	19
39	MILKSOURCE LAST EVENING	19
40	PAVUE WINDBROOK LAVENDER	20
41	WALES VIBE CALAMITY	21
42	MILKSOURCE RODDIE LISA	22
43	MILKSOURCE DFNT LIFE-RED-ET	23
44	MILKSOURCE DFNT LAVA-RED-ET	23
45	MILKSOURCE LOTUS L.A.-ET	23
46	MILKSOURCE REGINALD MIAMI	24
47	MILKSOURCE DOORMAN GEM-ET	25
48	MILKSOURCE ATWOOD GAIL-ET	25
49	MILKSOURCE DOORMAN GUESS-ET	25
50	MILKSOURCE DM GINGERSNAP-ET	25
51	HAMMERTIME NONIBERRY-RED	26
52	MILKSOURCE REDBURST ALMA-RED	27
53	MILKSOURCE SID JEWEL-ET	28
54	MILKSOURCE SID JILLIAN-ET	28
55	MILKSOURCE SID JILL-ET	28
56	MILKSOURCE SID JESSA-ET	28
57	MILKSOURCE DOORMAN JULIET-ET	28
58	MILKSOURCE DOORMAN JOSIE-ET	28
59	MILKSOURCE MCCUTCHEN JACKIE	28
60	MILKSOURCE DOORMAN ALI	29
61	MILKSOURCE DOORMAN CARMEN	30
62	MILKSOURCE BARRY ABBY	31
63	MILKSOURCE TAZ BANK ROLE	32
64	MILKSOURCE DUNDEE FLAME-ET	33
65	MILKSOURCE DM ACCELERATE-ET	34
66	LIATRIS BROKAW TOUTOUNE	35
67	MILKSOURCE REGINALD TIARA	35

N

O

T

E

S



**2016 TAG
EVENT**
MARCH 25&26
milksource.com

Jamie Endvick, Genetics Herd Manager | 608-566-9096 | jendvick@milksource.net | WWW.MILKSOURCE.COM



Follow us on FACEBOOK & TWITTER! facebook.com/milksource or twitter.com/milksourceman

