

Butlerview Farm TAG SALE 2013



SATURDAY, JULY 6 - FRIDAY JULY 12, 2013
AT BUTLerview FARM
CHEBANSE, IL

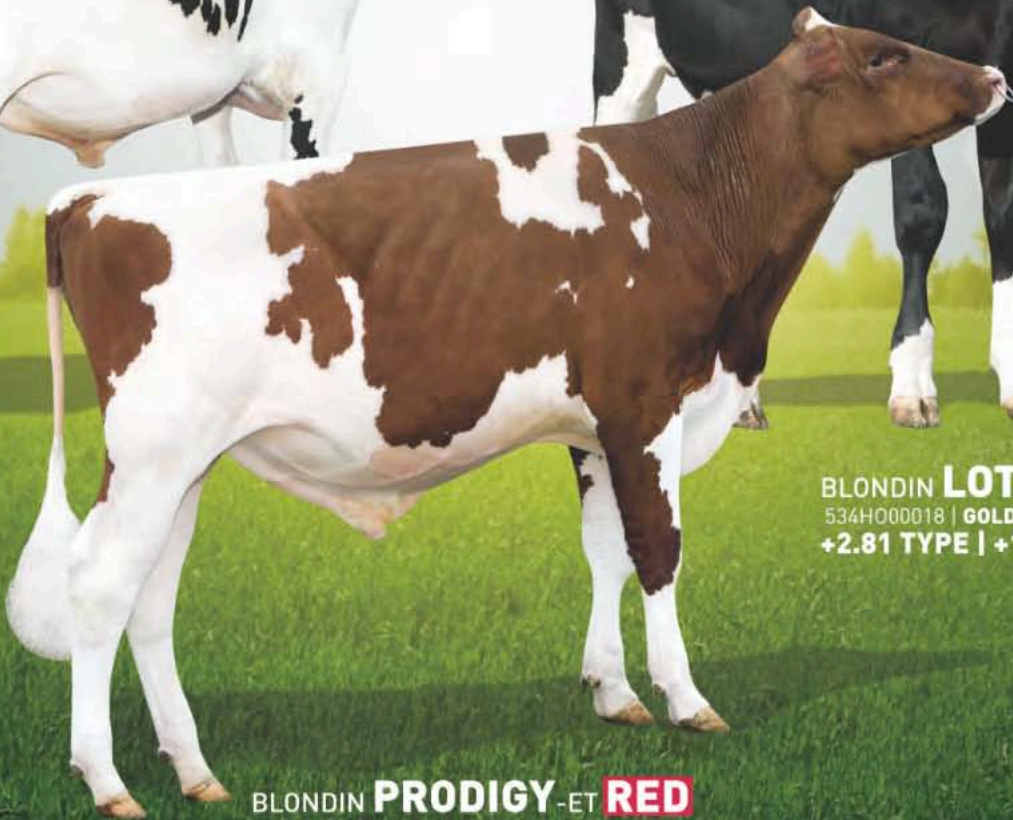


Red Carpet FASHION

MR CHASSITY **COLT 45-ET RC PO**
534H000008 | **COLT P X SHOTTLE**
+3.20 TYPE | +2123 GTPI



BLONDIN **LOTUS-ET RC**
534H000018 | **GOLDWYN X TALENT**
+2.81 TYPE | +1562 GTPI



BLONDIN **PRODIGY-ET RED**
534H000021 | **DESTROY X TALENT**
+2.11 TYPE | +1753 GTPI

Photos by Beth Herges | USDA/HA GENOMIC EVALUATION 04/2013

Sale Information

Sales Force

Ed Fellers - 913 484 4121 - edmondfellers@yahoo.com
Jeff Butler - 217 341 2437 - illinijet@aol.com
Tim Rauen - 563 590 7871 - butlerviewtim@gmail.com
Declan Patten - 815 370 9544 - declan.patten@butlerview.com
Roger Turner - 608 770 0012 - roger@jetstreamgenetics.com
Ray LeBlanc - 802 249 2155 - overlookln@gmail.com
Paul Trapp - 608 332 0079 - paul.trapp@genusplc.com
Lloyd Simon - 715 803 5696 - lloydbarbsimon@gmail.com
Joe Price - 765 618 5479 - butlerview@hotmail.com
Dusty Schirm - 815 670 2111 - dustyschirm@yahoo.com
Josh Fairbanks - 319 480 3692 - joshfairbanks10@yahoo.com

Fitters

Graisson Schmitt - 608 797 2855
Tony Galgowski - 715 307 1914
Sean Lynch - 262 749 0608
Corey Popp - 320 223 3257

Details

Sale starts promptly at 1:00 PM Sat July 6th and ends Fri July 12 at 1:00 PM. Prices and pedigrees will appear ONLINE at <http://www.butlerview.com> and be available at the FARM. Approximately 60 lots will have prices listed, and any of the over 200 animals on the farm that do not, will be priced upon request. Every animal will have a price!!! Every potential buyer will be given an opportunity to purchase!!!

Sales will be on a first come basis with the only exception being within the beginning hour of the Tag Sale. If during the first hour more than one buyer submits the full price bid, there will be a bid off between the respective parties on those lots.

Sale Location - BUTLerview FARM

1827 E 7750 S Rd Chebanse, IL 60922

Butlerview Farm





Blondin Atwood Cosmos VG88-2yrs
 Lot 1

1

Blondin Atwood Cosmos VG88-2yrs

DOB: 06/08/10 CAN 106274765 2-10 88 EEVEV
 PTA -521M +11F -11P 74%R 4/2013
 PTA -26NM +.12%F +.02%P
 PTA -1.9PL 2.88SCS -1.2DPR 9%DCE
 PTA +3.58T +3.34UDC +3.28FLC 73%R 4/2013

2ND SUMMER YEARLING, NY SPRING SHOW 2011 – 2ND SUMMER YEARLING, QUEBEC SPRING SHOW 2011

MAPLE-DOWNS-I G W ATWOOD-ET +1822 G
 CAN 8956379 100%RHA-NA TR TV TL TY TD
 4-06 90 EE+V 02/24/2007
 PTA +272M +46F +12P 99%R 4/2013
 PTA +98NM +.14%F +.02%P 76%US
 PTA -1.4PL 2.95SCS -2.5DPR 10%DCE
 PTA +4.57T +3.17UDC +3.75FLC 98%R 4/2013

WINDCROFT DRAKE COSMO +1288
 CAN 7740527 100%RHA-NA
 6-00 93 EEEEE 10/09/2006
 PTA -991M# -24F# -23P# 33%R 4/2013
 PTA -1.4PL# 3.07SCS# +.5DPR# 9%DCE#
 PTA +1.37T +1.82UDC +1.43FLC 40%R 4/2013
 AGE X DAYS MILK DCRM % FAT % PRT DCRC
 CAN 2-07 2 305 24709 3.9 970 3.1 762
 316 25498 3.9 998 3.1 789
 CAN 3-07 2 305 29645 3.9 1168 3.1 929
 365 34830 3.9 1375 3.2 1102

1st 5-Yr-Old, Maxville Holstein Show 2012
2nd Sr-3-Yr-Old & Res. Int Champ, Expo Quebec 2010
2nd Sr-3-Yr-Old, Ontario Summer Show 2010
1st Sr-2-Yr-Old Kemptville 2009

BRAEDALE GOLDWYN +1944 G
 CAN 10705608 100%RHA-NA TV TL TY
 CAN 08Y GP 84 GM 12/11 01/03/2000
 PTA +3.00T +2.57UDC +2.46FLC 99%R 4/2013

MD-DELIGHT DURHAM ATLEE-ET +1764 G
 USA 131704103 100%RHA-NA
 4-06 92 EEEEE GMD DOM 09/11/2001
 PTA +3.73T +3.47UDC +2.78FLC 92%R 4/2013
 AGE X DAYS MILK DCRM % FAT % PRT DCRC
 3-11 2 305 33700 94 5.7 1916 3.0 1021 94X

FAR-O-LA DEBBIE-JO DRAKE-ET +1404 G
 USA 130498623 100%RHA-NA TV TL
 PTA +2.24T +2.46UDC +1.71FLC 99%R 4/2013

WINDCROFT LEDUC COGNAC +1058
 CAN 7369153 100%RHA-NA
 CAN 06Y VG 87 08/15/2002
 PTA +.21T# -.11UDC# -.40FLC# 33%R 4/2013
 AGE X DAYS MILK DCRM % FAT % PRT DCRC
 CAN 2-08 2 305 12592 3.8 476 3.0 377
 365 14345 3.8 551 3.1 444
 CAN 4-01 2 305 13165 4.2 551 2.9 382
 356 14629 4.2 619 3.0 437
 CAN 5-03 2 305 13941 4.4 615 3.1 432
 314 14038 4.4 617 3.1 435
 CAN 6-03 2 305 15727 4.2 665 3.1 485
 352 16662 4.3 720 3.2 527
 CAN 7-06 2 305 15443 4.5 692 3.1 480

Dutlerville Farm



Trefle Angola Goldwing VG86-2yrs
Lot 2

2

Trefle Angola Goldwing VG86-2yrs

DOB: 09/07/10 CAN 106663115

2-07 86 VE+V+

PTA -398M# +4F# -4P# 33%R 4/2013

PTA +.9PL# 2.82SCS# -.6DPR# 9%DCE#

PTA +1.64T#+1.18UDC#+1.53FLC# 33%R 4/2013

5th FALL YEALRING, WDE 2012 – 3RD FALL YEALRING, NY SPRING SHOW 2012

BRAEDALE GOLDWYN +1944 G

CAN 10705608 100%RHA-NA TV TL TY

CAN 08Y GP 84 GM 12/11 01/03/2000

PTA +68M +35F +15P 99%R 4/2013

PTA +371NM +.12%F +.05%P 8%US

PTA +1.7PL 2.63SCS -.2DPR 6%DCE

PTA +3.00T +2.57UDC +2.46FLC 99%R 4/2013

ALLIANCE LYSTER ANKA +1068

CAN 101289250 100%RHA-NA

CAN 07Y VG 88 06/20/2003

PTA -863M# -27F# -22P# 33%R 4/2013

PTA +.1PL# 3.01SCS# -.9DPR#11%DCE#

PTA +.27T# -.21UDC# +.59FLC# 33%R 4/2013

AGE X DAYS MILK DCRM % FAT % PRT DCRC

CAN 1-11 2 305 17846 3.5 628 3.0 528

364 21089 3.5 745 3.0 636

CAN 5-03 2 305 25348 4.1 1040 3.2 805

365 28878 4.1 1192 3.2 923

CAN 6-06 2 305 25348 4.2 1062 3.1 783

358 28481 4.3 1212 3.1 896

Res. All Canadian Summer Yearling 2004

2nd Summer Yearling, RWF 2004

SHOREMAR JAMES +1234 G

CAN 5902195 100%RHA-NA TV TL

CAN 02Y GP 81 GM 2/04 05/30/1993

PTA +.65T +.64UDC +.21FLC 99%R 4/2013

BRAEDALE BALER TWINE-ETS +1633 G

CAN 6860888 100%RHA-NA TL

CAN 02Y VG 86 11/08/1997

PTA +2.24T +2.32UDC +1.29FLC 92%R 4/2013

AGE X DAYS MILK DCRM % FAT % PRT DCRC

CAN 2-01 2 305 26667 4.9 1303 3.1 835

TCET LYSTER +1165 G

CAN 6487689 100%RHA-NA TV TL

PTA +1.12T +.52UDC +1.67FLC 99%R 4/2013

MOOVER CHARLES ANNA +988

CAN 6377486 100%RHA-NA

CAN EX 2E 07/11/1995

PTA -1574M# -28F# -39P# 31%R 4/2013

PTA +1.5PL# 3.22SCS# +2.1DPR#12%DCE#

PTA -.58T# -.93UDC# -.49FLC# 31%R 4/2013

AGE X DAYS MILK DCRM % FAT % PRT DCRC

CAN 3-06 2 305 26684 4.1 1084 3.0 806

324 27583 4.1 1133 3.1 843

CAN 4-07 2 305 25401 4.4 1113 3.1 796

355 27497 4.4 1216 3.2 876

CAN 7-10 2 305 26336 3.8 1005 2.9 763

365 30346 3.9 1190 3.0 903

Dutlerview Farm



MapleOak Acme Sweetheart-RED
Lot 3

3

MapleOak Acme Sweetheart-RED

DOB: 03/09/10 CAN 106396754 100%RHA-NA
CAN 02Y GP 82

PTA -529M# -2F# -2P# 33%R 4/2013

PTA +1.5PL# 3.03SCS# -.2DPR# 8%DCE#

PTA +1.49T#+1.76UDC# +.74FLC# 32%R 4/2013 MACE

1ST JR 3 YR-OLD, MIDWEST SPRING R&W SHOW '13 & 1ST JR 3 YR-OLD, NY SPRING R&W SHOW '13

KHW ELM-PARK ACME-ET +1877 G

USA 61720218 100%RHA-NA RC TV TL TY TD
2-11 90 VEEE GM 4/11 08/29/2005
PTA -156M +23F +15P 98%R 4/2013
PTA +304NM +.12%F +.08%P 51%US
PTA +3.2PL 3.09SCS -.2DPR 7%DCE
PTA +2.83T +3.07UDC +1.68FLC 96%R 4/2013

MAPLEOAK RUBENS SUNDAY-RED-ET +1151 M

CAN 102149435 100%RHA-NA RC
CAN 03Y VG 85 04/04/2004
MACE YIELD EVALUATION
PTA -901M# -26F# -18P# 32%R 4/2013
PTA -.2PL# 2.96SCS# -.1DPR# 9%DCE#
MACE TYPE EVALUATION
PTA +.14T# +.44UDC# -.20FLC# 32%R 4/2013
AGE X DAYS MILK DCRM % FAT % PRT DCRC
CAN 2-03 2 305 18503 3.7 683 3.2 597
350 20941 3.8 787 3.3 687
CAN 3-07 2 305 25529 3.7 943 3.2 815
360 28472 3.8 1069 3.3 931
CAN 4-09 2 305 26620 3.4 912 3.2 845
365 30222 3.5 1064 3.2 976

LADINO PARK TALENT-IMP-ET +1423 G

AUS 930377 100%RHA-NA RC TV TL
PTA +2.16T +2.31UDC +1.14FLC 99%R 4/2013

KAMPS-HOLLOW ALTITUDE-ET +2052 G

USA 129136431 100%RHA-NA RC CV TL
7-09 95 EEEEE 2E DOM 01/11/2000
PTA +3.20T +2.83UDC +3.49FLC 92%R 4/2013
AGE X DAYS MILK DCRM % FAT % PRT DCRC
** 7-00 2 305 34450 92 4.5 1562 3.2 1098 92

STBVQ RUBENS-ET +1388 G

CAN 5844883 100%RHA-NA RC TV TL
CAN 14Y VG 88 GM 8/04 05/01/1993
PTA +1.33T +2.04UDC +.22FLC 99%R 4/2013

MAPLEOAK CHIEF MAN STACEY-RED +920 M

CAN 10524001 100%RHA-NA
CAN 06Y VG 87 03/10/1998
PTA -1233M# -32F# -35P# 30%R 4/2013
PTA -.5PL# 2.94SCS# +.9DPR# 9%DCE#
PTA -1.05T#-1.17UDC# -.61FLC# 28%R 4/2013
AGE X DAYS MILK DCRM % FAT % PRT DCRC
CAN 2-05 2 305 21318 3.9 822 3.0 642
354 23734 3.9 923 3.1 724
CAN 3-07 2 305 25906 3.8 981 2.9 762
359 28002 3.8 1067 3.0 835
CAN 4-09 2 305 27345 3.9 1053 2.8 779
365 29960 3.9 1161 2.9 868
CAN 6-04 2 302 22835 4.0 906 2.9 669
CAN 7-04 2 291 25716 3.5 912 3.0 771
CAN 8-03 2 305 26294 3.2 853 2.9 763

Butlervie



Ms Aubrey GC Auren
Lot 4

4

MS Aubrey GC Auren-ET

DOB: 4/20/12 USA 71494741 GTPI +2045
 PTA +1152M +37F +23P 72%R 4/2013
 PTA +347NM -.02%F -.04%P
 PTA +1.4PL 2.66SCS -1.7DPR 5%DCE
 PTA +4.08T +3.36UDC +3.43FLC 72%R 4/2013
HIGHEST TYPE DTR FROM AUBRY- CURRENTLY FLUSHING!

MR CHASSITY GOLD CHIP-ET +2090 G
 USA 140145553 100%RHA-NA TR TV TL TY TD
 3-01 92 EEVE 09/04/2009
 PTA +710M +37F +15P 76%R 4/2013
 PTA +449NM +.04%F -.02%P 100%US
 PTA +2.8PL 2.58SCS -.6DPR 3%DCE
 PTA +3.87T +3.10UDC +3.13FLC 76%R 4/2013

MS ATLEES SHOTTLE AUBRY-ET +1957 G
 USA 65249841 100%RHA-NA
 5-04 92 EEEEE DOM 12/04/2007
 PTA +914M +32F +23P 80%R 4/2013
 PTA +325NM -.01%F -.02%P
 PTA +2.1PL 2.69SCS -1.0DPR 7%DCE
 PTA +3.11T +2.72UDC +2.71FLC 81%R 4/2013

*Only Shottle from Atlee! And she is Awesome!!
 The only full sister to Aftershock & maternal sister to
 Atwood, the hottest bull in the breed.
 Sons in A.I.; including a +2327 Observer!
 Four daughters over +2200 GTPI!
 Maternal Sister to Aubry:
 • MS Atlees Goldwyn Ariel-ET (EX-92 EX-MS)
 4-00 2 365 36557 4.4 1595 3.2 181
 Res. All-American Jr. 2-Yr-Old 2009*

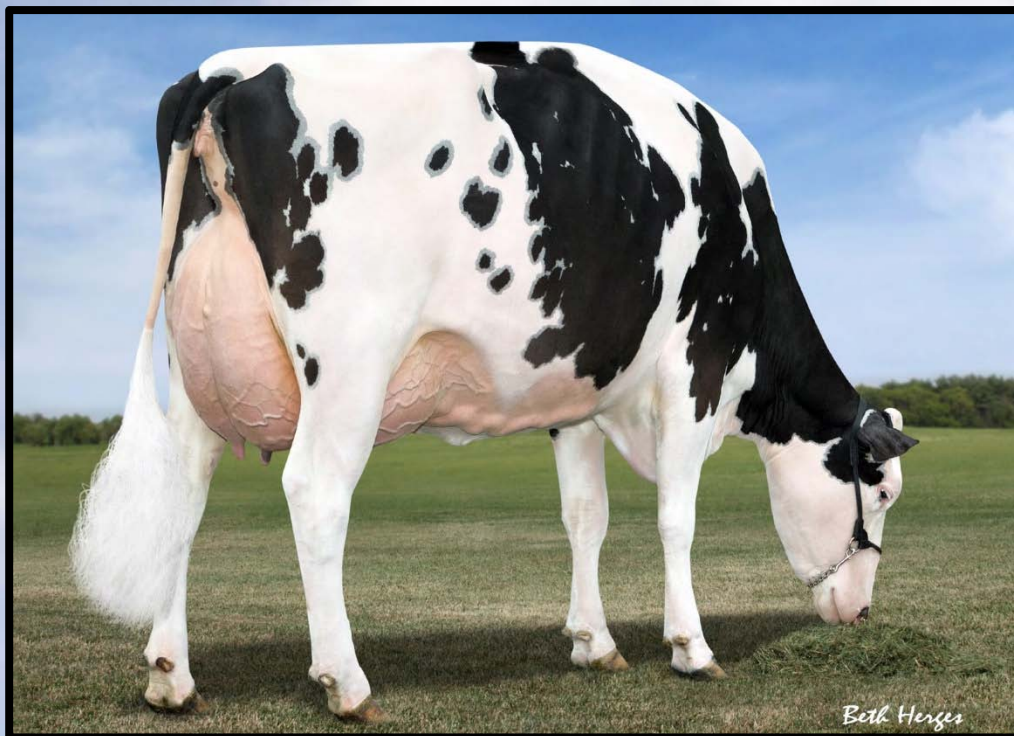
BRAEDALE GOLDWYN +1944 G
 CAN 10705608 100%RHA-NA TV TL TY
 CAN 08Y GP 84 GM 12/11 01/03/2000
 PTA +3.00T +2.57UDC +2.46FLC 99%R 4/2013

REGANCREST S CHASSITY-ET +2071 G
 USA 62496899 100%RHA-NA TL TY
 4-05 92 EEEVE GMD DOM 12/13/2005
 PTA +3.44T +2.43UDC +2.38FLC 85%R 4/2013
 AGE X DAYS MILK DCRM % FAT % PRT DCRC
 *** 3-10 2 365 42280 93 4.3 1798 2.5 1070 93

PICSTON SHOTTLE-ET +1975 G
 GBR 598172 100%RHA-NA TV TL TY
 PTA +2.54T +1.95UDC +1.73FLC 99%R 4/2013

MD-DELIGHT DURHAM ATLEE-ET +1764 G
 USA 131704103 100%RHA-NA
 4-06 92 EEEEE GMD DOM 09/11/2001
 PTA +187M +30F +9P 93%R 4/2013
 PTA +88NM +.09%F +.01%P
 PTA -.9PL 2.89SCS -2.0DPR 9%DCE
 PTA +3.73T +3.47UDC +2.78FLC 92%R 4/2013
 AGE X DAYS MILK DCRM % FAT % PRT DCRC
 * 2-08 2 305 26680 94 4.4 1183 3.1 817 94
 365 32520 92 4.3 1400 3.1 1013 92
 * 3-11 2 305 33700 94 5.7 1916 3.0 1021 94X
 365 38290 94 5.5 2091 3.1 1177 94X
 ALL-AMERICAN SR 3Y COW 2005
 1st INTERNATIONAL SR 3Y & R I CH 2005

Next Dams: VG88 x EX-94-2E x EX-94-2E



MS Atlees Shottle Aubry EX-92
 Dam of Lot 5

5

MS Aubrey HL Aqua 2021

DOB: 2/2/13 USA 72437568 GTPI +2150
 PTA +1452M +57F +42P 71%R 4/2013
 PTA +484NM +.01%F -.01%P
 PTA +2.5PL 2.71SCS -1.7DPR 7%DCE
 PTA +3.53T +2.95UDC +3.22FLC 70%R 4/2013

SEAGULL-BAY HEADLINER-ET +2420 G
 USA 69981350 100%RHA-NA TV TL TY TD
 01/03/2011
 PTA +1782M +93F +66P 73%R 4/2013
 PTA +795NM +.12%F +.05%P 100%US
 PTA +4.7PL 2.73SCS -.4DPR 6%DCE
 PTA +3.02T +2.46UDC +2.43FLC 72%R 4/2013

MS ATLEES SHOTTLE AUBRY-ET +1957 G
 USA 65249841 100%RHA-NA
 5-04 92 EEEEE DOM 12/04/2007
 PTA +914M +32F +23P 80%R 4/2013
 PTA +325NM -.01%F -.02%P
 PTA +2.1PL 2.69SCS -1.0DPR 7%DCE
 PTA +3.11T +2.72UDC +2.71FLC 81%R 4/2013

*Only Shottle from Atlee! And she is Awesome!!
 The only full sister to Aftershock & maternal sister to
 Atwood, the hottest bull in the breed.
 Sons in A.I.; including a +2327 Observer!
 Four daughters over +2200 GTPI!
 Maternal Sister to Aubry:
 • MS Atlees Goldwyn Ariel-ET (EX-92 EX-MS)
 4-00 2 365 36557 4.4 1595 3.2 181
 Res. All-American Jr. 2-Yr-Old 2009*

ROYLANE SOCRA ROBUST-ET +2245 G
 USA 64966739 100%RHA-NA TR TV TL TD
 3-03 88 VVVV 12/23/2008
 PTA +1.98T +1.96UDC +2.00FLC 76%R 4/2013

AMMON-PEACHEY SHAUNA-ET +2302 G
 USA 66228178 100%RHA-NA
 2-04 87 VEV+V DOM 04/16/2009
 PTA +2.69T +2.07UDC +.93FLC 80%R 4/2013
 AGE X DAYS MILK DCRM % FAT % PRT DCRC
 *** 2-01 3 305 29520 97 4.1 1196 3.0 889 96

PICSTON SHOTTLE-ET +1975 G
 GBR 598172 100%RHA-NA TV TL TY
 PTA +2.54T +1.95UDC +1.73FLC 99%R 4/2013

MD-DELIGHT DURHAM ATLEE-ET +1764 G
 USA 131704103 100%RHA-NA
 4-06 92 EEEEE GMD DOM 09/11/2001
 PTA +187M +30F +9P 93%R 4/2013
 PTA +88NM +.09%F +.01%P
 PTA -.9PL 2.89SCS -2.0DPR 9%DCE
 PTA +3.73T +3.47UDC +2.78FLC 92%R 4/2013
 AGE X DAYS MILK DCRM % FAT % PRT DCRC
 * 2-08 2 305 26680 94 4.4 1183 3.1 817 94
 365 32520 92 4.3 1400 3.1 1013 92
 * 3-11 2 305 33700 94 5.7 1916 3.0 1021 94X
 ALL-AMERICAN SR 3Y COW 2005
 1st INTERNATIONAL SR 3Y & R I CH 2005

Next Dams: VG88 x EX-94-2E x EX-94-2E



MS Atlees Goldwyn Ariel EX-92
 Dam of Lot 6

6

MS Ariels Robust Avatar

DOB: 9/1/11 USA 71016135 GTPI +2108
 PTA +138M +42F +21P 73%R 4/2013
 PTA +548NM +.14%F +.06%P
 PTA +4.7PL 2.74SCS +.6DPR 5%DCE
 PTA +2.62T +3.05UDC +2.40FLC 72%R 4/2013
DUE 12/11/13 TO MCCUTCHEN

ROYLANE SOGRA ROBUST-ET +2245 G
 USA 64966739 100%RHA-NA TR TV TL TD
 3-03 88 VVVV 12/23/2008
 PTA +1441M +82F +50P 82%R 4/2013
 PTA +758NM +.11%F +.03%P 100%US
 PTA +5.8PL 2.79SCS -.5DPR 5%DCE
 PTA +1.98T +1.96UDC +2.00FLC 76%R 4/2013

MS ATLEES GOLDWYN ARIEL-ET +1856 G
 USA 63164327 100%RHA-NA
 4-06 92 VEEEE 03/05/2007
 PTA -352M +25F +5P 79%R 4/2013
 PTA +220NM +.15%F +.06%P
 PTA +.7PL 2.85SCS -.3DPR 7%DCE
 PTA +3.39T +3.40UDC +2.62FLC 80%R 4/2013
 AGE X DAYS MILK DCRM % FAT % PRT DCRC
 ** 2-00 2 305 23410 93 4.1 964 3.1 718 93
 365 28330 93 4.2 1186 3.1 881 93
 * 4-00 2 305 32570 94 4.3 1407 3.2 1037 94

2nd Jr. 2-Yr-Old World Dairy Expo 2009
Res. All-American Jr. 2-Yr-Old 2009
Full Sister to Atwood & maternal sister to Aftershock

VELVET-VIEW-KJ SOCRATES-ET +1765 G
 USA 133126053 100%RHA-NA TR TV TL TD
 5-07 94 EEEE GM 8/09 07/16/2002
 PTA +.76T +.19UDC +.52FLC 99%R 4/2013

SEAGULL-BAY OMAN MIRROR-ET +2209 G
 USA 62115945 100%RHA-NA
 3-09 86 +VVVV DOM 11/12/2004
 PTA +2.24T +2.33UDC +2.23FLC 84%R 4/2013
 AGE X DAYS MILK DCRM % FAT % PRT DCRC
 *** 3-00 2 305 32310 100 4.3 1400 3.4 1087 100X

BRAEDALE GOLDWYN +1944 G
 CAN 10705608 100%RHA-NA TV TL TY
 CAN 08Y GP 84 GM 12/11 01/03/2000
 PTA +3.00T +2.57UDC +2.46FLC 99%R 4/2013

MD-DELIGHT DURHAM ATLEE-ET +1764 G
 USA 131704103 100%RHA-NA
 4-06 92 EEEEE GMD DOM 09/11/2001
 PTA +187M +30F +9P 93%R 4/2013
 PTA +88NM +.09%F +.01%P
 PTA -.9PL 2.89SCS -.20DPR 9%DCE
 PTA +3.73T +3.47UDC +2.78FLC 92%R 4/2013
 AGE X DAYS MILK DCRM % FAT % PRT DCRC
 * 2-08 2 305 26680 94 4.4 1183 3.1 817 94
 365 32520 92 4.3 1400 3.1 1013 92
 * 3-11 2 305 33700 94 5.7 1916 3.0 1021 94X
 365 38290 94 5.5 2091 3.1 1177 94X
 ALL-AMERICAN SR 3Y COW 2005
 1st INTERNATIONAL SR 3Y & R I CH 2005

Butlerview



Farnear-BH Brocade Boisy
Lot 7

7

Farnear-BH Brocade Boisy-ET

DOB: 9/6/11 USA 70477032 GTPI +2306

PTA +1501M +52F +51P 73%R 4/2013

PTA +657NM -.01%F +.02%P

PTA +4.8PL 2.76SCS -.4DPR 6%DCE

PTA +3.55T +3.03UDC +2.90FLC 73%R 4/2013

EMBRYOS EXPORTED WORLDWIDE - DUE 12/23/13 TO MOGUL

DEN-K ALTAGREATEST +2265 G

USA 140331158 100%RHA-NA TV TL TY
06/10/2009

PTA +2417M +73F +69P 75%R 4/2013

PTA +746NM -.05%F -.01%P 100%US

PTA +6.0PL 2.91SCS -.4DPR 6%DCE

PTA +2.21T +1.79UDC +.78FLC 75%R 4/2013

REGANCREST G BROCADE-ET +1852 G

USA 62496933 100%RHA-NA TL

4-07 92 EEEEE DOM 01/08/2006

PTA -222M -1F +2P 89%R 4/2013

PTA +214NM +.03%F +.03%P

PTA +1.3PL 2.68SCS -.8DPR 5%DCE

PTA +3.62T +3.55UDC +2.93FLC 90%R 4/2013

AGE X DAYS MILK DCRM % FAT % PRT DCRC

*** 2-01 2 305 28690 97 4.0 1137 3.2 920 94

365 32680 97 3.9 1278 3.3 1064 94

*** 4-00 2 305 33340 95 3.8 1266 3.2 1058 95

365 38890 95 3.9 1517 3.3 1273 95

One of the highest type transmitting cows in the world!

Sold for \$900,000 as a package with sons and dtrs!

ENSENADA TABOO PLANET-ET +2176 G

USA 60597003 100%RHA-NA TR TV TL TY TD

4-11 90 EEVV GM 12/12 03/03/2003

PTA +1.93T +1.44UDC -.47FLC 99%R 4/2013

DEN-K BOLTON ALI-ET +1959 G

USA 139343881 100%RHA-NA BL

3-05 86 +VVVV 06/15/2007

PTA +2.29T +1.96UDC +1.66FLC 78%R 4/2013

AGE X DAYS MILK DCRM % FAT % PRT DCRC

*** 4-08 3 365 37620 97 3.3 1259 3.2 1190 91

BRAEDALE GOLDWYN +1944 G

CAN 10705608 100%RHA-NA TV TL TY

CAN 08Y GP 84 GM 12/11 01/03/2000

PTA +3.00T +2.57UDC +2.46FLC 99%R 4/2013

REGANCREST-PR BARBIE-ET +1557 G

USA 60602011 100%RHA-NA TV

7-01 92 EEEEE GMD DOM 07/24/2001

PTA +371M +0F +12P 96%R 4/2013

PTA -127NM -.05%F +.00%P

PTA -3.3PL 3.02SCS -3.7DPR 7%DCE

PTA +3.66T +3.32UDC +2.50FLC 95%R 4/2013

AGE X DAYS MILK DCRM % FAT % PRT DCRC

*** 2-06 2 305 26720 103 3.9 1054 3.1 834 95

365 31690 103 3.9 1237 3.1 990 95

*** 6-08 2 197 22860 3.7 845 2.7 622

H.M. ALL-AMERICAN JR 3Y COW 2004

Butlerview Farm



Farnear Brocade Breeha
Lot 8

8

Farnear Brocade Breesha

DOB: 8/10/11 USA 70477028 GTPI +2008
 PTA +461M +26F +29P 75%R 4/2013
 PTA +404NM +.03%F +.06%P
 PTA +2.7PL 2.81SCS -.9DPR 6%DCE
 PTA +3.18T +2.99UDC +2.56FLC 74%R 4/2013
DUE 11/06/13 TO ALTAJACKMAN

DE-SU 521 BOOKEM-ET +2204 G
 USA 66636657 99%RHA-I TR TV TL TY TD
 3-08 86 VV+V 02/21/2009
 PTA +1335M +47F +52P 82%R 4/2013
 PTA +654NM +.00%F +.05%P 100%US
 PTA +5.6PL 2.87SCS +.1DPR 5%DCE
 PTA +2.67T +2.26UDC +1.44FLC 78%R 4/2013

REGANCREST G BROCADE-ET +1852 G
 USA 62496933 100%RHA-NA TL
 4-07 92 EEEEE DOM 01/08/2006
 PTA -222M -1F +2P 89%R 4/2013
 PTA +214NM +.03%F +.03%P
 PTA +1.3PL 2.68SCS -.8DPR 5%DCE
 PTA +3.62T +3.55UDC +2.93FLC 90%R 4/2013
 AGE X DAYS MILK DCRM % FAT % PRT DCRC
 *** 2-01 2 305 28690 97 4.0 1137 3.2 920 94
 365 32680 97 3.9 1278 3.3 1064 94
 *** 4-00 2 305 33340 95 3.8 1266 3.2 1058 95
 365 38890 95 3.9 1517 3.3 1273 95

One of the highest type transmitting cows in the world!
Sold for \$900,000 as a package with sons and dtrs!

ENSENADA TABOO PLANET-ET +2176 G
 USA 60597003 100%RHA-NA TR TV TL TY TD
 4-11 90 EEVV GM 12/12 03/03/2003
 PTA +1.93T +1.44UDC -.47FLC 99%R 4/2013

CLEAR-ECHO 822 RAMO 1199-ET +1699 G
 USA 61765027 99%RHA-I TL
 2-06 86 +VGEV DOM 10/17/2004
 PTA +1.52T +1.32UDC +1.78FLC 93%R 4/2013
 AGE X DAYS MILK DCRM % FAT % PRT DCRC
 *** 2-00 3 305 26750 97 3.5 944 3.1 828 95

BRAEDALE GOLDWYN +1944 G
 CAN 10705608 100%RHA-NA TV TL TY
 CAN 08Y GP 84 GM 12/11 01/03/2000
 PTA +3.00T +2.57UDC +2.46FLC 99%R 4/2013

REGANCREST-PR BARBIE-ET +1557 G
 USA 60602011 100%RHA-NA TV
 7-01 92 EEEEE GMD DOM 07/24/2001
 PTA +371M +0F +12P 96%R 4/2013
 PTA -127NM -.05%F +.00%P
 PTA -3.3PL 3.02SCS -3.7DPR 7%DCE
 PTA +3.66T +3.32UDC +2.50FLC 95%R 4/2013
 AGE X DAYS MILK DCRM % FAT % PRT DCRC
 *** 2-06 2 305 26720 103 3.9 1054 3.1 834 95
 365 31690 103 3.9 1237 3.1 990 95
 *** 6-08 2 197 22860 3.7 845 2.7 622
 H.M. ALL-AMERICAN JR 3Y COW 2004

Butlerview Farm



Regancrest S Chassity EX-92
 Dam of Lots 9-14

9 MS Chassity Cassandra

DOB: 12/16/12 USA 72127364 GTPI +2069
 PTA +834M +38F +28P 73%R 4/2013
 PTA +409NM +.03%F +.01%P
 PTA +2.0PL 2.73SCS +.7DPR 4%DCE
 PTA +3.24T +2.39UDC +2.41FLC 73%R 4/2013
 "THIS ONES SPECIAL – BIG TIME FRAME"

DE-SU D MAYFIELD 893-ET +2265 G
 USA 69473980 100%RHA-NA TR TV TL TY TD
 2-09 90 EEEV 08/02/2010
 PTA +1538M +47F +45P 77%R 4/2013
 PTA +582NM -.03%F +.00%P 100%US
 PTA +3.5PL 2.85SCS +1.0DPR 3%DCE
 PTA +3.48T +2.80UDC +2.58FLC 76%R 4/2013

REGANCREST S CHASSITY-ET +2071 G
 USA 62496899 100%RHA-NA TL TY
 4-05 92 EEEVE GMD DOM 12/13/2005
 PTA +1592M +69F +35P 84%R 4/2013
 PTA +425NM +.04%F -.05%P
 PTA +1.3PL 2.75SCS -1.6DPR 5%DCE
 PTA +3.44T +2.43UDC +2.38FLC 85%R 4/2013
 AGE X DAYS MILK DCRM % FAT % PRT DCRC
 *** 2-01 2 305 31900 93 4.3 1387 3.1 984 93
 2ND CT MILK & 2ND CT PROT
 365 36680 93 4.3 1567 3.1 1124 93
 2ND CT MILK & 2ND CT PROT
 *** 3-10 2 305 36660 93 4.3 1578 2.5 923 93
 365 42280 93 4.3 1798 2.5 1070 93
 LIFE 1071 105520 4.2 4383 2.8 2959

Global Cow of the Year 2011
 Dam of over 25 sires in AI including Gold Chip and
 Colt 45 *RC *PO

10 MS Chassity Cherris

DOB: 12/18/12 USA 72127376 GTPI +2252
 PTA +1618M +73F +46P 73%R 4/2013
 PTA +546NM +.05%F -.01%P
 PTA +1.5PL 2.76SCS -.5DPR 4%DCE
 PTA +3.76T +2.80UDC +3.02FLC 73%R 4/2013

RONELEE TOYSTORY DOMAIN-ET +2022 G
 USA 137974489 100%RHA-NA TV TL TY TD
 3-06 90 EEVV GM 12/12 10/31/2006
 PTA +2.81T +2.55UDC +2.04FLC 97%R 4/2013

SULLY SHOTTLE MAY-TW +2118 G
 USA 138218285 100%RHA-NA
 6-01 90 EEEEE DOM 03/27/2007
 PTA +2.92T +2.56UDC +3.28FLC 85%R 4/2013
 AGE X DAYS MILK DCRM % FAT % PRT DCRC
 * 2-02 3 305 28300 92 3.2 897 3.2 893 83

PICSTON SHOTTLE-ET +1975 G
 GBR 598172 100%RHA-NA TV TL TY
 PTA +2.54T +1.95UDC +1.73FLC 99%R 4/2013

REGANCREST CINDERELLA +1565 G
 USA 61361673 100%RHA-NA
 6-03 92 EEEEE 2E GMD DOM 02/02/2004
 PTA +493M +26F +5P 91%R 4/2013
 PTA -100NM +.03%F -.04%P
 PTA -3.4PL 3.07SCS -4.0DPR 6%DCE
 PTA +3.84T +3.16UDC +2.26FLC 91%R 4/2013
 AGE X DAYS MILK DCRM % FAT % PRT DCRC
 *** 2-05 2 305 26610 103 4.6 1212 3.0 791 95X
 365 32300 103 4.4 1437 3.0 968 95X
 *** 5-00 2 305 29430 102 4.1 1215 2.9 849 95
 365 34220 102 4.1 1418 2.9 1009 95

1st MID-E FALL NAT SR 2Y COW 2006
 3rd MID-W SPR NAT SR 3Y COW 2007



Regancrest S Chassity EX-92
 Dam of Lot 9-14

11

MS Chassity Epic Chil

DOB: 08/26/12 USA 71494896 GTPI +2112
 USA 71494832 100%RHA-NA
 PTA +1552M +43F +43P 72%R 4/2013
 PTA +541NM -.05%F -.01%P
 PTA +4.0PL 2.82SCS +.8DPR 4%DCE
 PTA +2.35T +1.67UDC +1.74FLC 72%R 4/2013

GENERATIONS EPIC-ET +2310 G
 CAN 11104016 100%RHA-NA TV TL TY TD
 05/26/2010
 PTA +1809M +55F +54P 76%R 4/2013
 PTA +682NM -.04%F +.00%P 100%US
 PTA +4.9PL 2.75SCS +1.5DPR 5%DCE
 PTA +2.74T +1.87UDC +2.60FLC 75%R 4/2013

REGANCREST S CHASSITY-ET +2071 G
 USA 62496899 100%RHA-NA TL TY
 4-05 92 EEEVE GMD DOM 12/13/2005
 PTA +1592M +69F +35P 84%R 4/2013
 PTA +425NM +.04%F -.05%P
 PTA +1.3PL 2.75SCS -1.6DPR 5%DCE
 PTA +3.44T +2.43UDC +2.38FLC 85%R 4/2013
 AGE X DAYS MILK DCRM % FAT % PRT DCRC
 *** 2-01 2 305 31900 93 4.3 1387 3.1 984 93
 2ND CT MILK & 2ND CT PROT
 365 36680 93 4.3 1567 3.1 1124 93
 2ND CT MILK & 2ND CT PROT
 *** 3-10 2 305 36660 93 4.3 1578 2.5 923 93
 365 42280 93 4.3 1798 2.5 1070 93
 LIFE 1071 105520 4.2 4383 2.8 2959

Global Cow of the Year 2011
 Dam of over 25 sires in AI including Gold Chip and
 Colt 45 *RC *PO

CHARLESDALE SUPERSTITION-ET +2107 G
 USA 62065919 100%RHA-NA TR TV TL TY TD
 GM 12/12 12/29/2004
 PTA +1.91T +1.75UDC +1.02FLC 99%R 4/2013

TRAMILDA-N BAXTER EMILY-ET +2209 G
 USA 139232811 100%RHA-NA
 CAN 02Y VG 85 02/10/2008
 PTA +2.32T +1.73UDC +2.26FLC 77%R 4/2013
 AGE X DAYS MILK DCRM % FAT % PRT DCRC
 CAN 2-05 2 282 30946 4.2 1287 3.2 1001

PICSTON SHOTTLE-ET +1975 G
 GBR 598172 100%RHA-NA TV TL TY
 PTA +2.54T +1.95UDC +1.73FLC 99%R 4/2013

REGANCREST CINDERELLA +1565 G
 USA 61361673 100%RHA-NA
 6-03 92 EEEEE 2E GMD DOM 02/02/2004
 PTA +493M +26F +5P 91%R 4/2013
 PTA -100NM +.03%F -.04%P
 PTA -3.4PL 3.07SCS -4.0DPR 6%DCE
 PTA +3.84T +3.16UDC +2.26FLC 91%R 4/2013
 AGE X DAYS MILK DCRM % FAT % PRT DCRC
 *** 2-05 2 305 26610 103 4.6 1212 3.0 791 95X
 365 32300 103 4.4 1437 3.0 968 95X
 *** 5-00 2 305 29430 102 4.1 1215 2.9 849 95
 365 34220 102 4.1 1418 2.9 1009 95

1st MID-E FALL NAT SR 2Y COW 2006
 3rd MID-W SPR NAT SR 3Y COW 2007



Regancrest S Chassity EX-92
 Dam of Lot 9-12

12

MS Chassity Mogul Cici

DOB: 10/13/12 USA 71494896 GTPI +2070
 PTA +880M +76F +26P 73%R 4/2013
 PTA +480NM +.16%F +.00%P
 PTA +2.1PL 2.74SCS -2.0DPR 6%DCE
 PTA +3.06T +3.07UDC +2.67FLC 73%R 4/2013

MOUNTFIELD SSI DCY MOGUL-ET +2403 G
 840003006972816 100%RHA-NA TR TV TL TY TD
 06/22/2010
 PTA +1449M +78F +50P 76%R 4/2013
 PTA +784NM +.10%F +.03%P 100%US
 PTA +4.9PL 2.66SCS +.0DPR 5%DCE
 PTA +3.03T +3.19UDC +3.17FLC 76%R 4/2013

REGANCREST S CHASSITY-ET +2071 G
 USA 62496899 100%RHA-NA TL TY
 4-05 92 EEEVE GMD DOM 12/13/2005
 PTA +1592M +69F +35P 84%R 4/2013
 PTA +425NM +.04%F -.05%P
 PTA +1.3PL 2.75SCS -1.6DPR 5%DCE
 PTA +3.44T +2.43UDC +2.38FLC 85%R 4/2013
 AGE X DAYS MILK DCRM % FAT % PRT DCRC
 *** 2-01 2 305 31900 93 4.3 1387 3.1 984 93
 2ND CT MILK & 2ND CT PROT
 365 36680 93 4.3 1567 3.1 1124 93
 2ND CT MILK & 2ND CT PROT
 *** 3-10 2 305 36660 93 4.3 1578 2.5 923 93
 365 42280 93 4.3 1798 2.5 1070 93
 LIFE 1071 105520 4.2 4383 2.8 2959

Global Cow of the Year 2011
 Dam of over 25 sires in AI including Gold Chip and
 Colt 45 *RC *PO

COYNE-FARMS DORCY-ET +2251 G
 USA 139005002 100%RHA-NA BY TV TL
 4-09 87 VVV+ 09/17/2007
 PTA +2.97T +3.17UDC +2.97FLC 96%R 4/2013

MOUNTFIELD MARSH MAXINE-ET +2012 G
 USA 62784081 100%RHA-NA
 2-07 88 VV+VE DOM 04/23/2006
 PTA +2.07T +2.24UDC +2.39FLC 86%R 4/2013
 AGE X DAYS MILK DCRM % FAT % PRT DCRC
 *** 2-03 2 159 14320 4.3 611 3.2 454

PICSTON SHOTTLE-ET +1975 G
 GBR 598172 100%RHA-NA TV TL TY
 PTA +2.54T +1.95UDC +1.73FLC 99%R 4/2013

REGANCREST CINDERELLA +1565 G
 USA 61361673 100%RHA-NA
 6-03 92 EEEEE 2E GMD DOM 02/02/2004
 PTA +493M +26F +5P 91%R 4/2013
 PTA -100NM +.03%F -.04%P
 PTA -3.4PL 3.07SCS -4.0DPR 6%DCE
 PTA +3.84T +3.16UDC +2.26FLC 91%R 4/2013
 AGE X DAYS MILK DCRM % FAT % PRT DCRC
 *** 2-05 2 305 26610 103 4.6 1212 3.0 791 95X
 365 32300 103 4.4 1437 3.0 968 95X
 *** 5-00 2 305 29430 102 4.1 1215 2.9 849 95
 365 34220 102 4.1 1418 2.9 1009 95

1st MID-E FALL NAT SR 2Y COW 2006
 3rd MID-W SPR NAT SR 3Y COW 2007



MS Chassity Atwood Candy
Maternal Sister to Lots 9-14

13

MS Chassity Uno Cuddle

DOB: 1/21/13 USA 72127460 NA GTPI +2279
PTA +956M +99F +40P 73%R 4/2013
PTA +637NM +.24%F +.04%P
PTA +3.2PL 2.73SCS -.6DPR 6%DCE
PTA +3.43T +2.58UDC +2.57FLC 73%R 4/2013

AMIGHETTI NUMERO UNO-ET +2456 G
ITA 17990915143 100%RHA-NA TV TL TY TD
07/15/2010
PTA +992M +89F +47P 76%R 4/2013
PTA +836NM +.20%F +.06%P 100%US
PTA +6.3PL 2.59SCS +1.3DPR 6%DCE
PTA +3.08T +2.70UDC +2.21FLC 75%R 4/2013

REGANCREST S CHASSITY-ET +2071 G
USA 62496899 100%RHA-NA TL TY
4-05 92 EEEVE GMD DOM 12/13/2005
PTA +1592M +69F +35P 84%R 4/2013
PTA +425NM +.04%F -.05%P
PTA +1.3PL 2.75SCS -1.6DPR 5%DCE
PTA +3.44T +2.43UDC +2.38FLC 85%R 4/2013
AGE X DAYS MILK DCRM % FAT % PRT DCRC
*** 2-01 2 305 31900 93 4.3 1387 3.1 984 93
2ND CT MILK & 2ND CT PROT
365 36680 93 4.3 1567 3.1 1124 93
2ND CT MILK & 2ND CT PROT
*** 3-10 2 305 36660 93 4.3 1578 2.5 923 93
365 42280 93 4.3 1798 2.5 1070 93
LIFE 1071 105520 4.2 4383 2.8 2959

Global Cow of the Year 2011
Dam of over 25 sires in AI including Gold Chip and
*Colt 45 *RC *PO*

LONG-LANGS OMAN OMAN-ET +2185 G
USA 135746776 100%RHA-NA TV TL TY TD
4-11 85 VVV+ GM 12/12 04/30/2004
PTA +2.17T +1.64UDC +1.96FLC 98%R 4/2013

AMIGHETTI SHOTTLE AVE-ET +2062 G
ITA 17990346074 100%RHA-NA
PTA +2.84T +2.49UDC +2.40FLC 80%R 4/2013

PICSTON SHOTTLE-ET +1975 G
GBR 598172 100%RHA-NA TV TL TY
PTA +2.54T +1.95UDC +1.73FLC 99%R 4/2013

REGANCREST CINDERELLA +1565 G
USA 61361673 100%RHA-NA
6-03 92 EEEEE 2E GMD DOM 02/02/2004
PTA +493M +26F +5P 91%R 4/2013
PTA -100NM +.03%F -.04%P
PTA -3.4PL 3.07SCS -4.0DPR 6%DCE
PTA +3.84T +3.16UDC +2.26FLC 91%R 4/2013
AGE X DAYS MILK DCRM % FAT % PRT DCRC
*** 2-05 2 305 26610 103 4.6 1212 3.0 791 95X
365 32300 103 4.4 1437 3.0 968 95X
*** 5-00 2 305 29430 102 4.1 1215 2.9 849 95
365 34220 102 4.1 1418 2.9 1009 95

1st MID-E FALL NAT SR 2Y COW 2006
3rd MID-W SPR NAT SR 3Y COW 2007



Regancrest S Chassity EX-92
 Dam of Lots 9-14

14

MS Chassity Chelsea-ET

DOB: 12/20/12 USA 72127377 GTPI +2155
 PTA +1153M +49F +31P 73%R 4/2013
 PTA +570NM +.03%F -.01%P
 PTA +4.1PL 2.77SCS +1.1DPR 4%DCE
 PTA +2.65T +2.46UDC +2.38FLC 73%R 4/2013

DE-SU D MAYFIELD 893-ET +2265 G
 USA 69473980 100%RHA-NA TR TV TL TY TD
 2-09 90 EEEV 08/02/2010
 PTA +1538M +47F +45P 77%R 4/2013
 PTA +582NM -.03%F +.00%P 100%US
 PTA +3.5PL 2.85SCS +1.0DPR 3%DCE
 PTA +3.48T +2.80UDC +2.58FLC 76%R 4/2013

REGANCREST S CHASSITY-ET +2071 G
 USA 62496899 100%RHA-NA TL TY
 4-05 92 EEEVE GMD DOM 12/13/2005
 PTA +1592M +69F +35P 84%R 4/2013
 PTA +425NM +.04%F -.05%P
 PTA +1.3PL 2.75SCS -1.6DPR 5%DCE
 PTA +3.44T +2.43UDC +2.38FLC 85%R 4/2013
 AGE X DAYS MILK DCRM % FAT % PRT DCRC
 *** 2-01 2 305 31900 93 4.3 1387 3.1 984 93
 2ND CT MILK & 2ND CT PROT
 365 36680 93 4.3 1567 3.1 1124 93
 2ND CT MILK & 2ND CT PROT
 *** 3-10 2 305 36660 93 4.3 1578 2.5 923 93
 365 42280 93 4.3 1798 2.5 1070 93
 LIFE 1071 105520 4.2 4383 2.8 2959

Global Cow of the Year 2011
 Dam of over 25 sires in AI including Gold Chip and
 Colt 45 *RC *PO

RONELEE TOYSTORY DOMAIN-ET +2022 G
 USA 137974489 100%RHA-NA TV TL TY TD
 3-06 90 EEVV GM 12/12 10/31/2006
 PTA +2.81T +2.55UDC +2.04FLC 97%R 4/2013

SULLY SHOTTLE MAY-TW +2118 G
 USA 138218285 100%RHA-NA
 6-01 90 EEEEE DOM 03/27/2007
 PTA +2.92T +2.56UDC +3.28FLC 85%R 4/2013
 AGE X DAYS MILK DCRM % FAT % PRT DCRC
 * 2-02 3 305 28300 92 3.2 897 3.2 893 83

PICSTON SHOTTLE-ET +1975 G
 GBR 598172 100%RHA-NA TV TL TY
 PTA +2.54T +1.95UDC +1.73FLC 99%R 4/2013

REGANCREST CINDERELLA +1565 G
 USA 61361673 100%RHA-NA
 6-03 92 EEEEE 2E GMD DOM 02/02/2004
 PTA +493M +26F +5P 91%R 4/2013
 PTA -100NM +.03%F -.04%P
 PTA -3.4PL 3.07SCS -4.0DPR 6%DCE
 PTA +3.84T +3.16UDC +2.26FLC 91%R 4/2013
 AGE X DAYS MILK DCRM % FAT % PRT DCRC
 *** 2-05 2 305 26610 103 4.6 1212 3.0 791 95X
 365 32300 103 4.4 1437 3.0 968 95X
 *** 5-00 2 305 29430 102 4.1 1215 2.9 849 95
 365 34220 102 4.1 1418 2.9 1009 95

1st MID-E FALL NAT SR 2Y COW 2006
 3rd MID-W SPR NAT SR 3Y COW 2007



MS Chassity Goldwyn Cash VG87-2yrs
 2nd Dam of Lot 15 & 16

15

EDG Cashbust Mogul 2157-ET

DOB: 4/8/13 USA 72437704 GTPI +2258
 PTA +510M +77F +33P 75%R 4/2013
 PTA +757NM +.23%F +.07%P
 PTA +5.4PL +2.49SCS -.1DPR 4%DCE
 PTA +2.45T +2.41UDC +2.24FLC 74%R 4/2013

MOUNTFIELD SSI DCY MOGUL-ET +2403 G
 840003006972816 100%RHA-NA TR TV TL TY TD
 06/22/2010
 PTA +1449M +78F +50P 76%R 4/2013
 PTA +784NM +.10%F +.03%P 100%US
 PTA +4.9PL 2.66SCS +.0DPR 5%DCE
 PTA +3.03T +3.19UDC +3.17FLC 76%R 4/2013

FARNEAR-TBR-BH CASHBUST-ET +2260 G
 USA 70639289 100%RHA-NA
 08/18/2011
 PTA +830M +84F +39P 73%R 4/2013
 PTA +770NM +.20%F +.05%P
 PTA +5.7PL 2.46SCS -.3DPR 4%DCE
 PTA +2.16T +1.84UDC +2.22FLC 71%R 4/2013

Maternal Sister to Cashcoin, the #3 GTPI active sire in the world! Also sister to Cashmoney!

COYNE-FARMS DORCY-ET +2251 G
 USA 139005002 100%RHA-NA BY TV TL
 4-09 87 VVV+ 09/17/2007
 PTA +2.97T +3.17UDC +2.97FLC 96%R 4/2013

MOUNTFIELD MARSH MAXINE-ET +2012 G
 USA 62784081 100%RHA-NA
 2-07 88 VV+VE DOM 04/23/2006
 PTA +2.07T +2.24UDC +2.39FLC 86%R 4/2013
 AGE X DAYS MILK DCRM % FAT % PRT DCRC
 *** 2-03 2 159 14320 4.3 611 3.2 454

ROYLANE SOCRA ROBUST-ET +2245 G
 USA 64966739 100%RHA-NA TR TV TL TD
 3-03 88 VVVV 12/23/2008
 PTA +1.98T +1.96UDC +2.00FLC 76%R 4/2013

MS CHASSITY GOLDWYN CASH-ET +2183 G
 USA 140175910 100%RHA-NA
 CAN 02Y VG 87 09/02/2009
 PTA +677M +80F +35P 80%R 4/2013
 PTA +615NM +.21%F +.05%P
 PTA +3.0PL 2.58SCS +.0DPR 5%DCE
 PTA +2.87T +2.06UDC +2.12FLC 76%R 4/2013

*Full sister to Goldchip, maternal sister to Colt 45!
 Sold for \$205,000 in Destination Vegas Sale 2010*

**Next Dams: Regancrest S Chassity EX-92,
 Cinderella EX-92 x Juror Brina EX-92**

Butlerview Farms



Farnear-TBR-BH Cashbust
 Dam of Lot 15 & 16

16

EDG Cashbust Mogul 2167-ET

DOB: 04/11/2013 USA 72437714 GTPI +2054
 PTA +836M +56F +28P 75%R 4/2013
 PTA +568NM +.1%F +.01%P
 PTA +3.9PL +2.57SCS -.1DPR 4%DCE
 PTA +2.22T +2.09UDC +2.52FLC 74%R 4/2013

MOUNTFIELD SSI DCY MOGUL-ET +2403 G
 840003006972816 100%RHA-NA TR TV TL TY TD
 06/22/2010
 PTA +1449M +78F +50P 76%R 4/2013
 PTA +784NM +.10%F +.03%P 100%US
 PTA +4.9PL 2.66SCS +.0DPR 5%DCE
 PTA +3.03T +3.19UDC +3.17FLC 76%R 4/2013

FARNEAR-TBR-BH CASHBUST-ET +2260 G
 USA 70639289 100%RHA-NA
 08/18/2011
 PTA +830M +84F +39P 73%R 4/2013
 PTA +770NM +.20%F +.05%P
 PTA +5.7PL 2.46SCS -.3DPR 4%DCE
 PTA +2.16T +1.84UDC +2.22FLC 71%R 4/2013

Maternal Sister to Cashcoin, the #3 GTPI active sire in the world! Also sister to Cashmoney!

COYNE-FARMS DORCY-ET +2251 G
 USA 139005002 100%RHA-NA BY TV TL
 4-09 87 VVV+ 09/17/2007
 PTA +2.97T +3.17UDC +2.97FLC 96%R 4/2013

MOUNTFIELD MARSH MAXINE-ET +2012 G
 USA 62784081 100%RHA-NA
 2-07 88 VV+VE DOM 04/23/2006
 PTA +2.07T +2.24UDC +2.39FLC 86%R 4/2013
 AGE X DAYS MILK DCRM % FAT % PRT DCRC
 *** 2-03 2 159 14320 4.3 611 3.2 454

ROYLANE SOCRA ROBUST-ET +2245 G
 USA 64966739 100%RHA-NA TR TV TL TD
 3-03 88 VVVV 12/23/2008
 PTA +1.98T +1.96UDC +2.00FLC 76%R 4/2013

MS CHASSITY GOLDWYN CASH-ET +2183 G
 USA 140175910 100%RHA-NA
 CAN 02Y VG 87 09/02/2009
 PTA +677M +80F +35P 80%R 4/2013
 PTA +615NM +.21%F +.05%P
 PTA +3.0PL 2.58SCS +.0DPR 5%DCE
 PTA +2.87T +2.06UDC +2.12FLC 76%R 4/2013

*Full sister to Goldchip, maternal sister to Colt 45!
 Sold for \$205,000 in Destination Vegas Sale 2010*

**Next Dams: Regancrest S Chassity EX-92,
 Cinderella EX-92 x Juror Brina EX-92**

Butlerview Farm



*Des-Y-Gen Planet Silk VG87-2yrs
Dam of Lot 17*

17

Dymentholm Sunview Samba *RC

DOB: 11/2/11 CAN 11004733 GTPI +2078
 PTA +737M +66F +36P 71%R 4/2013
 PTA +508NM +.15%F +.05%P
 PTA +3.0PL 2.82SCS -.1DPR 7%DCE
 PTA +2.56T +2.25UDC +1.71FLC 70%R 4/2013
BRED 6/24/13 TO OHARE P

WILLSBRO LARSON-ET +1931 G
 GBR 642862 100%RHA-NA RC TV TL TY
 10/31/2008
 PTA +1488M +52F +52P 75%R 4/2013
 PTA +248NM -.01%F +.03%P 100%US
 PTA -.8PL 3.08SCS -1.5DPR 9%DCE
 PTA +3.20T +1.65UDC +2.98FLC 74%R 4/2013

DES-Y-GEN PLANET SILK-ET +2168 G
 CAN 106109413 100%RHA-NA RC TY
 2-05 87 VE+VV 09/06/2009
 PTA +1392M +88F +45P 78%R 4/2013
 PTA +671NM +.14%F +.01%P
 PTA +4.6PL 2.84SCS -.7DPR 7%DCE
 PTA +2.24T +2.38UDC +.77FLC 77%R 4/2013
 AGE X DAYS MILK DCRM % FAT % PRT DCRC
 *** 2-02 2 305 25500 95 4.4 1125 3.0 753 95
 365 29990 95 4.5 1351 3.0 904 95

*The #1 RED/RC cow in the breed!!
 The most recent million dollar cow!
 Dam of several high sons in AI*

DUDOC MR BURNS-ET +1687 G
 CAN 100745543 100%RHA-NA RC TV TL TY
 CAN 05Y VG 85 07/25/2002
 PTA +2.22T +.88UDC +2.31FLC 98%R 4/2013

ACECROFT GOLDWYN LILA Z PI-ET +1778 G
 GBR 11244311 100%RHA-NA
 PTA +2.27T +2.01UDC +2.04FLC 76%R 4/2013

ENSENADA TABOO PLANET-ET +2176 G
 USA 60597003 100%RHA-NA TR TV TL TY TD
 4-11 90 EEVV GM 12/12 03/03/2003
 PTA +1.93T +1.44UDC -.47FLC 99%R 4/2013

GEN-I-BEQ BOLDTON SILENCE-ETS +1793 G
 CAN 104862615 100%RHA-NA RC
 CAN 02Y VG 85 08/03/2007
 PTA +552M +40F +22P 84%R 4/2013
 PTA +224NM +.07%F +.02%P
 PTA +.3PL 3.08SCS -1.0DPR 8%DCE
 PTA +2.43T +2.27UDC +2.58FLC 79%R 4/2013
 AGE X DAYS MILK DCRM % FAT % PRT DCRC
 CAN 2-04 2 305 25948 4.6 1194 3.3 861
 365 30002 4.6 1391 3.4 1012

Next Dams: Goldwyn Secret VG87-2yrs (Sold for \$160,000) x Durham VG87 7* x Glen Drummond Splendour VG86-2yrs 36* x VG88 18* x EX 13* x EX-2E 7* x VG4*

Butlerville Farm



Werrcroft Goldwyn Tara EX-93
 Dam of Lot 18-20

18 MS Tara GC Tera
 DOB: 03/05/13 USA 72127508
 PTA +193M# +24F# +6P# 27%R 4/2013
 PTA +1.5PL# 2.75SCS# -.3DPR# 6%DCE#
 PTA +2.48T#+2.58UDC#+2.27FLC# 29%R 4/2013

19 MS Tara GC Talsa
 DOB: 03/05/13 USA 72127508
 PTA +193M# +24F# +6P# 27%R 4/2013
 PTA +1.5PL# 2.75SCS# -.3DPR# 6%DCE#
 PTA +2.48T#+2.58UDC#+2.27FLC# 29%R 4/2013

MR CHASSITY GOLD CHIP-ET +2090 G
 USA 140145553 100%RHA-NA TR TV TL TY TD
 3-01 92 EEEV 09/04/2009
 PTA +710M +37F +15P 76%R 4/2013
 PTA +449NM +.04F -.02P 100%US
 PTA +2.8PL 2.58SCS -.6DPR 3%DCE
 PTA +3.87T +3.10UDC +3.13FLC 76%R 4/2013

BRAEDALE GOLDWYN +1944 G
 CAN 10705608 100%RHA-NA TV TL TY
 CAN 08Y GP 84 GM 12/11 01/03/2000
 PTA +3.00T +2.57UDC +2.46FLC 99%R 4/2013

REGANCREST S CHASSITY-ET +2071 G
 USA 62496899 100%RHA-NA TL TY
 4-05 92 EEEVE GMD DOM 12/13/2005
 PTA +3.44T +2.43UDC +2.38FLC 85%R 4/2013
 AGE X DAYS MILK DCRM % FAT % PRT DCRC
 *** 3-10 2 365 42280 93 4.3 1798 2.5 1070 93

WERRCROFT GOLDWYN TARA +1540
 CAN 7772421 100%RHA-NA
 5-02 93 EEEEE 07/02/2006
 PTA -324M# +11F# -4P# 33%R 4/2013
 PTA +.2PL# 2.91SCS# +.1DPR# 8%DCE#
 PTA +1.08T +2.05UDC +1.40FLC 39%R 4/2013
 AGE X DAYS MILK DCRM % FAT % PRT DCRC
 CAN 2-06 2 305 18406 3.9 716 2.8 520
 365 21128 3.9 826 2.9 610

BRAEDALE GOLDWYN +1944 G
 CAN 10705608 100%RHA-NA TV TL TY
 CAN 08Y GP 84 GM 12/11 01/03/2000
 PTA +3.00T +2.57UDC +2.46FLC 99%R 4/2013

4th 5 Year Old, WDE 2012
Nom All-American & All-Canadian 5 Year Old 2011
3rd Junior 3 Year Old, Quebec Spring 2009

WERRCROFT IGNITER TABITHA +1107
 CAN 9207863 100%RHA-NA
 CAN 02Y GP 83 01/07/2003
 PTA -716M# -14F# -23P# 33%R 4/2013
 PTA -1.4PL# 3.19SCS# +.4DPR#10%DCE#
 PTA +.45T# +.12UDC# -.05FLC# 33%R 4/2013
 AGE X DAYS MILK DCRM % FAT % PRT DCRC
 CAN 2-05 2 305 19486 3.8 742 2.9 567
 315 20026 3.8 767 2.9 585
 CAN 3-06 2 248 14841 3.3 487 3.0 445

Next Dams: Progress VG85 x Lindy GP84 x VG85 x EX-1E 2* x EX-1E 8*





Werrcroft Goldwyn Tara EX-93
 Dam of Lot 18-20

20

MS Tara GC Tango-ET

DOB: 3/4/13 USA 72127509 100%RHA-NA
 PTA +193M# +24F# +6P# 27%R 4/2013
 PTA +1.5PL# 2.75SCS# -.3DPR# 6%DCE#
 PTA +2.48T#+2.58UDC#+2.27FLC# 29%R 4/2013

MR CHASSITY GOLD CHIP-ET +2090 G
 USA 140145553 100%RHA-NA TR TV TL TY TD
 3-01 92 EEVE 09/04/2009
 PTA +710M +37F +15P 76%R 4/2013
 PTA +449NM +.04%F -.02%P 100%US
 PTA +2.8PL 2.58SCS -.6DPR 3%DCE
 PTA +3.87T +3.10UDC +3.13FLC 76%R 4/2013

WERRCROFT GOLDWYN TARA +1540
 CAN 7772421 100%RHA-NA
 5-02 93 EEEEE 07/02/2006
 PTA -324M# +11F# -4P# 33%R 4/2013
 PTA +.2PL# 2.91SCS# +.1DPR# 8%DCE#
 PTA +1.08T +2.05UDC +1.40FLC 39%R 4/2013
 AGE X DAYS MILK DCRM % FAT % PRT DCRC
 CAN 2-06 2 305 18406 3.9 716 2.8 520
 365 21128 3.9 826 2.9 610

4th 5 Year Old, WDE 2012
Nom All-American & All-Canadian 5 Year Old 2011
3rd Junior 3 Year Old, Quebec Spring 2009

BRAEDALE GOLDWYN +1944 G
 CAN 10705608 100%RHA-NA TV TL TY
 CAN 08Y GP 84 GM 12/11 01/03/2000
 PTA +3.00T +2.57UDC +2.46FLC 99%R 4/2013

REGANCREST S CHASSITY-ET +2071 G
 USA 62496899 100%RHA-NA TL TY
 4-05 92 EEEVE GMD DOM 12/13/2005
 PTA +3.44T +2.43UDC +2.38FLC 85%R 4/2013
 AGE X DAYS MILK DCRM % FAT % PRT DCRC
 *** 3-10 2 365 42280 93 4.3 1798 2.5 1070 93

BRAEDALE GOLDWYN +1944 G
 CAN 10705608 100%RHA-NA TV TL TY
 CAN 08Y GP 84 GM 12/11 01/03/2000
 PTA +3.00T +2.57UDC +2.46FLC 99%R 4/2013

WERRCROFT IGNITER TABITHA +1107
 CAN 9207863 100%RHA-NA
 CAN 02Y GP 83 01/07/2003
 PTA -716M# -14F# -23P# 33%R 4/2013
 PTA -1.4PL# 3.19SCS# +.4DPR#10%DCE#
 PTA +.45T# +.12UDC# -.05FLC# 33%R 4/2013
 AGE X DAYS MILK DCRM % FAT % PRT DCRC
 CAN 2-05 2 305 19486 3.8 742 2.9 567
 315 20026 3.8 767 2.9 585
 CAN 3-06 2 248 14841 3.3 487 3.0 445

Next Dams: Progress VG85 x Lindy GP84 x VG85 x EX-1E 2* x EX-1E 8*

Butlerview Farm



Winterbay Goldwyn Lotto EX-95
Dam of Lot 21

21

Lottos Atwood Leeza

DOB: 12/2/11 USA 141750169
PTA +254M# +35F# +11P# 45%R 4/2013
PTA -.8PL# 3.02SCS# -1.8DPR# 9%DCE#
PTA +3.56T#+2.85UDC#+2.60FLC# 44%R 4/2013
DONOR DAM – OVER 20 EMBRYOS SOLD TO JAPAN

MAPLE-DOWNS-I G W ATWOOD-ET +1822 G
CAN 8956379 100%RHA-NA TR TV TL TY TD
4-06 90 EE+V 02/24/2007
PTA +272M +46F +12P 99%R 4/2013
PTA +98NM +.14%F +.02%P 76%US
PTA -1.4PL 2.95SCS -2.5DPR 10%DCE
PTA +4.57T +3.17UDC +3.75FLC 98%R 4/2013

WINTERBAY GOLDWYN LOTTO +1660 G
CAN 7684164 100%RHA-NA
5-00 95 EEEEE 01/25/2006
PTA +235M +24F +10P 80%R 4/2013
PTA +100NM +.06%F +.01%P
PTA -.1PL 3.08SCS -1.1DPR 8%DCE
PTA +2.54T +2.52UDC +1.45FLC 78%R 4/2013
AGE X DAYS MILK DCRM % FAT % PRT DCRC
* 2-01 2 305 24140 93 4.1 989 3.1 746 93
365 27930 93 4.1 1145 3.1 866 93
** 3-04 2 305 25550 85 4.4 1128 3.5 885 85
365 31010 88 4.4 1360 3.5 1076 88
*** 4-06 2 305 31390 95 4.1 1282 3.4 1063 95
365 36620 95 4.1 1499 3.4 1249 95
LIFE 1280 106220 4.2 4511 3.4 3593

ALL-AMERICAN 4Y COW 2010
1st INTERNATIONAL SR 3Y COW 2009
2nd INTERNATIONAL 4Y COW 2010
5th E FALL NATL SR 2Y COW 2008

BRAEDALE GOLDWYN +1944 G
CAN 10705608 100%RHA-NA TV TL TY
CAN 08Y GP 84 GM 12/11 01/03/2000
PTA +3.00T +2.57UDC +2.46FLC 99%R 4/2013

MD-DELIGHT DURHAM ATLEE-ET +1764 G
USA 131704103 100%RHA-NA
4-06 92 EEEEE GMD DOM 09/11/2001
PTA +3.73T +3.47UDC +2.78FLC 92%R 4/2013
AGE X DAYS MILK DCRM % FAT % PRT DCRC
*** 3-11 2 305 33700 94 5.7 1916 3.0 1021 94X

BRAEDALE GOLDWYN +1944 G
CAN 10705608 100%RHA-NA TV TL TY
CAN 08Y GP 84 GM 12/11 01/03/2000
PTA +3.00T +2.57UDC +2.46FLC 99%R 4/2013

LEXIS TRIUMPHANT LOTTERY-TW-ET +1355 G
CAN 8755430 100%RHA-NA
CAN 02Y GP 84 09/02/2003
PTA +113M -1F +9P 73%R 4/2013
PTA -64NM -.02%F +.02%P
PTA -.1PL 3.26SCS -.4DPR 10%DCE
PTA +1.12T +.46UDC +.15FLC 65%R 4/2013
AGE X DAYS MILK DCRM % FAT % PRT DCRC
CAN 2-04 2 305 23348 3.9 901 3.1 727
334 25088 3.9 978 3.2 791
CAN 3-06 2 283 24105 3.7 888 3.1 736

Next Dams: Rudolph EX-2E 15* x Astro Jet EX-92
19* x VG85 2* x VG88 3* x VG87 8* x EX



*Whittier-Farms Amoretta VG85-2yrs
Dam of Lot 22*

22

Butlerview Daddy Aka-ET

DOB: 12/26/12 USA 72127388 GTPI +2235
PTA +467M +40F +29P 71%R 4/2013
PTA +601NM +.09%F +.06%P
PTA +5.0PL 2.48SCS +.9DPR 7%DCE
PTA +3.45T +3.32UDC +2.20FLC 71%R 4/2013

RONELEE SSI O DADDY-ET +2327 G
USA 70119251 100%RHA-NA TV TL TY TD
2-04 86 VVVV 01/09/2011
PTA +2005M +52F +61P 77%R 4/2013
PTA +683NM -.07%F +.00%P 100%US
PTA +5.5PL 2.74SCS +.2DPR 6%DCE
PTA +3.31T +2.44UDC +2.04FLC 76%R 4/2013
P9 50K GTPI

WHITTIER-FARMS AMORETTA-ET +1950 G
USA 140563524 100%RHA-NA
04/30/2010 VG85-2yrs CAN
PTA -408M +24F +6P 76%R 4/2013
PTA +363NM +.15%F +.07%P
PTA +2.8PL 2.68SCS +.4DPR 6%DCE
PTA +3.00T +3.25UDC +2.43FLC 76%R 4/2013

Sold for \$40,000 in the 2010 International Intrigue!

DE-SU OBSERVER-ET +2332 G
USA 65917481 100%RHA-NA TR TV TL TY TD
4-06 90 EVEV 11/07/2008
PTA +2.70T +3.02UDC +.89FLC 91%R 4/2013

RONELEE OUTSIDE DABBLE-ET +2111 G
USA 134644585 100%RHA-NA TV TL TY
6-08 91 EEEEE 2E GMD DOM 06/29/2003
PTA +2.64T +2.04UDC +2.07FLC 93%R 4/2013
AGE X DAYS MILK DCRM % FAT % PRT DCRC
*** 3-06 3 365 42250 100 3.6 1525 2.9 1236 89

KLASSIC BIG TIME-ET +1916 G
USA 61143535 100%RHA-NA TV TL TY TD
GM 8/12 12/11/2007
PTA +2.96T +2.86UDC +2.63FLC 98%R 4/2013

MS ATLEES GOLD ABIGAIL-ET +2022 G
USA 63164323 100%RHA-NA TV TL
4-05 91 EEEEEV DOM 02/06/2007
PTA +302M +60F +24P 82%R 4/2013
PTA +359NM +.19%F +.06%P
PTA +.9PL 2.81SCS -1.0DPR 8%DCE
PTA +3.53T +3.27UDC +2.97FLC 83%R 4/2013
AGE X DAYS MILK DCRM % FAT % PRT DCRC
*** 2-00 2 305 26560 100 4.0 1072 3.2 855 100
365 31740 100 4.1 1288 3.2 1024 100
*** 4-01 2 204 20750 4.8 995 3.0 614

Next Dams: Durham Atlee EX-92 x Storm VG88-3yrs x Chief Adeen EX-94-2E x Starbuck EX-94-2E

Butlerview Farms



*Benner Baxter Bethany VG85-2yrs
Dam of Lot 23*

23

Benner Snowman Brinkworth

DOB: 8/17/11 CAN 11321537 TV TY GTPI +2273
PTA +2229M +82F +67P 75%R 4/2013
PTA +692NM +.00%F +.00%P
PTA +3.6PL 2.80SCS -.3DPR 6%DCE
PTA +2.35T +1.66UDC +2.23FLC 74%R 4/2013
DUE 10/05/13 TO MCCUTCHEM

FLEVO GENETICS SNOWMAN-ET +2135 G
NLD 388965513 100%RHA-NA TV TL
01/14/2005
PTA +2202M +75F +64P 90%R 4/2013
PTA +571NM -.02%F -.01%P 0%US
PTA +1.9PL 2.73SCS -1.7DPR
PTA +2.13T +1.61UDC +2.52FLC 89%R 4/2013

MAPEL WOOD BAXTER BETHANY-ET +2265 G
CAN 9696511 100%RHA-NA
CAN 02Y VG 85 12/28/2007
PTA +1655M +91F +51P 84%R 4/2013
PTA +748NM +.11%F +.00%P
PTA +5.5PL 2.75SCS +.0DPR 7%DCE
PTA +2.14T +1.70UDC +2.06FLC 78%R 4/2013
AGE X DAYS MILK DCRM % FAT % PRT DCRG
CAN 2-03 2 305 34799 4.7 1620 3.3 1135
365 41325 4.6 1920 3.3 1347

Breeding on like a champion, her Mogul daughter sold for \$180,000US in the Parade of Perfection 2013! She is +2560 GTPI.

O-BEE MANFRED JUSTICE-ET +2000 G
USA 122358313 100%RHA-NA TR TV TL TD
7-07 94 EEEE GM 12/11 03/08/1998
PTA -.07T -.35UDC +1.07FLC 99%R 4/2013

BROEKS MBM ELSA-ET +1614 G
NLD 381135900 100%RHA-NA
PTA +2.38T +2.06UDC +2.66FLC 83%R 4/2013

EMERALD-ACR-SA T-BAXTER +1926 G
USA 132973942 100%RHA-NA B/R TV TL TY TD
PTA +1.81T +1.33UDC +1.77FLC 99%R 4/2013

GEN-I-BEQ SHOTTLE BOMBI-ET +2069 G
CAN 102438051 100%RHA-NA
6-03 92 EEEEE 12/17/2005
PTA +590M +64F +27P 86%R 4/2013
PTA +533NM +.16%F +.03%P
PTA +3.6PL 2.72SCS +.7DPR 7%DCE
PTA +2.42T +2.15UDC +1.25FLC 81%R 4/2013
AGE X DAYS MILK DCRM % FAT % PRT DCRG
CAN 2-01 2 305 27288 4.9 1338 3.2 867
365 31869 5.0 1609 3.2 1025
CAN 5-10 2 305 48280 93 3.8 1824 3.1 1479 93X
365 55290 93 3.7 2029 3.1 1714 93X

Next Dams: Champion EX-90 x Baler Twine VG86-2yrs 33* x Gypsy Grand VG88 37*

Butlerview Farms



*Misty Springs Snowman Brita*RC*
Lot 24

24

Misty Springs Snowman Brita *RC

DOB: 1/25/12 CAN11460850 GTPI +2196
 PTA +1623M +88F +61P 75%R 4/2013
 PTA +614NM +.10%F +.04%P
 PTA +2.4PL 2.69SCS -1.6DPR 7%DCE
 PTA +2.38T +1.87UDC +2.62FLC 74%R 4/2013
EXPORTED EMBRYOS WORLDWIDE – BRED 6/24 CASHCOIN

FLEVO GENETICS SNOWMAN-ET +2135 G
 NLD 388965513 100%RHA-NA TV TL
 01/14/2005
 PTA +2202M +75F +64P 90%R 4/2013
 PTA +571NM -.02%F -.01%P 0%US
 PTA +1.9PL 2.73SCS -1.7DPR
 PTA +2.13T +1.61UDC +2.52FLC 89%R 4/2013

MISTY SPRINGS MB BRIGHTER-RED +1862 G
 CAN 9670533 100%RHA-NA
 CAN 03Y VG 87 01/04/2008
 PTA +1029M +67F +44P 84%R 4/2013
 PTA +309NM +.11%F +.05%P
 PTA +.3PL 2.99SCS -2.2DPR 9%DCE
 PTA +2.43T +1.30UDC +2.13FLC 77%R 4/2013
 AGE X DAYS MILK DCRM % FAT % PRT DCRC
 CAN 2-08 2 305 22372 4.4 992 3.3 741
 365 26649 4.6 1223 3.4 910

#3 GLPI Red cow in Canada!

O-BEE MANFRED JUSTICE-ET +2000 G
 USA 122358313 100%RHA-NA TR TV TL TD
 7-07 94 EEEE GM 12/11 03/08/1998
 PTA -.07T -.35UDC +1.07FLC 99%R 4/2013

BROEKS MBM ELSA-ET +1614 G
 NLD 381135900 100%RHA-NA
 PTA +2.38T +2.06UDC +2.66FLC 83%R 4/2013

DUDOC MR BURNS-ET +1687 G
 CAN 100745543 100%RHA-NA RC TV TL TY
 CAN 05Y VG 85 07/25/2002
 PTA +2.22T +.88UDC +2.31FLC 98%R 4/2013

MISTY SPRINGS SEPT BRIGHT-RED +1722 G
 CAN 7866455 100%RHA-NA
 CAN 05Y VG 88 04/12/2006
 PTA +104M +64F -1P 73%R 4/2013
 PTA +244NM +.23%F -.02%P
 PTA +.1PL 2.83SCS -1.3DPR 9%DCE
 PTA +2.58T +1.77UDC +2.29FLC 65%R 4/2013
 AGE X DAYS MILK DCRM % FAT % PRT DCRC
 CAN 2-01 2 305 24722 4.9 1212 3.2 792
 365 29032 5.0 1448 3.3 959
 CAN 4-00 2 305 29329 5.1 1485 2.9 856
 365 33084 5.1 1693 3.0 1006

**Next Dams: VG88 Sept Storm x VG88 Talent x
 VG87 x VG88 x VG87 x VG87 x EX**

Butlerview Farm



Ladys-Manor Dominique
Dam of Lot 25-28

25

EDG Dominique Mcc 2147-ET

DOB: 4/3/13 USA 72437694 GTPI +2280
PTA +700M +67F +33P 75%R 4/2013
PTA +622NM +.16%F +.04%P
PTA +4.5PL +2.84SCS +.3DPR 5%DCE
PTA +3.81T +3.29UDC +2.28FLC 74%R 4/2013
HER FULL SISTER SOLD FOR \$31,000

DE-SU BKM MCCUTCHEN 1174-ET +2393 G
USA 69990138 99%RHA-I TV TL TY TD
1-11 88 VVVV 11/25/2010
PTA +1345M +67F +52P 75%R 4/2013
PTA +655NM +.07%F +.04%P 100%US
PTA +4.0PL 2.80SCS +.2DPR 5%DCE
PTA +3.82T +3.35UDC +2.91FLC 73%R 4/2013

LADYS-MANOR DOMINIQUE-ET +2375 G
USA 70189445 100%RHA-NA
06/10/2011
PTA +1273M +77F +45P 73%R 4/2013
PTA +714NM +.11%F +.02%P
PTA +5.0PL 2.79SCS +.7DPR 4%DCE
PTA +4.03T +3.49UDC +2.28FLC 73%R 4/2013

*A very rare heifer in the industry, great TPI for her age
with huge type! Could breed a special one!
Backed by generations of EX cows!*

DE-SU 521 BOOKEM-ET +2204 G
USA 66636657 99%RHA-I TR TV TL TY TD
3-08 86 VV+V 02/21/2009
PTA +2.67T +2.26UDC +1.44FLC 78%R 4/2013

SULLY SHOTTLE MAY-TW +2118 G
USA 138218285 100%RHA-NA
6-01 90 EEEEE DOM 03/27/2007
PTA +2.92T +2.56UDC +3.28FLC 85%R 4/2013
AGE X DAYS MILK DCRM % FAT % PRT DCRC
* 2-02 3 305 28300 92 3.2 897 3.2 893 83

LADYS-MANOR PL SHAMROCK-ET +2337 G
USA 68977120 100%RHA-NA TR TV TL TY TD
2-06 85 V+VV 09/11/2009
PTA +2.92T +2.18UDC +1.10FLC 76%R 4/2013

LADYS-MANOR ALLANAS DORA-ET +2067 G
USA 64673790 100%RHA-NA
4-09 92 EEEVE DOM 07/17/2007
PTA +618M +61F +31P 82%R 4/2013
PTA +422NM +.14%F +.05%P
PTA +1.6PL 2.78SCS -1.7DPR 7%DCE
PTA +3.65T +3.30UDC +2.48FLC 83%R 4/2013
AGE X DAYS MILK DCRM % FAT % PRT DCRC
*** 1-10 2 305 23500 100 4.5 1051 3.2 763 95
365 27970 100 4.5 1253 3.3 929 95
*** 3-07 2 305 35330 100 4.3 1521 3.1 1083 95
365 40640 100 4.4 1780 3.2 1283 95

Next Dams: Allan EX-95 x Durchan EX-95

Butlerview Farm



Ladys-Manor Allanas Dora EX-92
2nd Dam of Lot 25-28

26

EDG Dominique 2171-ET

DOB: 4/12/13 USA 72437718 GTPI +2199
PTA +1106M +48F +36P 75%R 4/2013
PTA +624NM +.03%F +.01%P
PTA +5.4PL +2.71SCS +.6DPR 5%DCE
PTA +2.78T +2.63UDC +2.10FLC 74%R 4/2013

S-S-I DOMAIN LITHIUM-ET +2250 G
840003004672704 100%RHA-NA TV TL TY TD
09/25/2010
PTA +1283M +45F +43P 75%R 4/2013
PTA +679NM -.01%F +.02%P 100%US
PTA +5.9PL 2.61SCS +1.5DPR 6%DCE
PTA +2.39T +2.16UDC +2.42FLC 75%R 4/2013

LADYS-MANOR DOMINIQUE-ET +2375 G
USA 70189445 100%RHA-NA
06/10/2011
PTA +1273M +77F +45P 73%R 4/2013
PTA +714NM +.11%F +.02%P
PTA +5.0PL 2.79SCS -.7DPR 4%DCE
PTA +4.03T +3.49UDC +2.28FLC 73%R 4/2013

*A very rare heifer in the industry, great TPI for her age
with huge type! Could breed a special one!
Backed by generations of EX cows!*

RONELEE TOYSTORY DOMAIN-ET +2022 G
USA 137974489 100%RHA-NA TV TL TY TD
3-06 90 EEVV GM 12/12 10/31/2006
PTA +2.81T +2.55UDC +2.04FLC 97%R 4/2013

GLEN-TOCTIN BOLT LUCILLE-ET +2217 G
USA 140018015 100%RHA-NA TY
3-04 87 VVEVV DOM 09/07/2008
PTA +2.83T +2.55UDC +2.61FLC 81%R 4/2013
AGE X DAYS MILK DCRM % FAT % PRT DCRC
*** 2-04 2 305 23580 100 4.1 966 3.2 753 100

LADYS-MANOR PL SHAMROCK-ET +2337 G
USA 68977120 100%RHA-NA TR TV TL TY TD
2-06 85 V+VV 09/11/2009
PTA +2.92T +2.18UDC +1.10FLC 76%R 4/2013

LADYS-MANOR ALLANAS DORA-ET +2067 G
USA 64673790 100%RHA-NA
4-09 92 EEEVE DOM 07/17/2007
PTA +618M +61F +31P 82%R 4/2013
PTA +422NM +.14%F +.05%P
PTA +1.6PL 2.78SCS -.7DPR 7%DCE
PTA +3.65T +3.30UDC +2.48FLC 83%R 4/2013
AGE X DAYS MILK DCRM % FAT % PRT DCRC
*** 1-10 2 305 23500 100 4.5 1051 3.2 763 95
365 27970 100 4.5 1253 3.3 929 95
*** 3-07 2 305 35330 100 4.3 1521 3.1 1083 95
365 40640 100 4.4 1780 3.2 1283 95

Next Dams: Allan EX-95 x Durchan EX-95

Butlerview



MS Durchan Ladys Allana EX-95
3rd Dam of Lot 25-28

27

EDG Dominique 2177

DOB: 4/17/13 USA 72437724 GTPI +2246
PTA +891M +58F +32P 73%R 4/2013
PTA +728NM +.01%F +.02%P
PTA +6.5PL +2.54SCS +1.1DPR 5%DCE
PTA +2.43T +2.34UDC +2.04FLC 73%R 4/2013

28

EDG Dominique 2179

DOB: 4/17/13 USA 72127508 GTPI +2241
PTA +1574M +57F +45P 73%R 4/2013
PTA +596NM +.00%F +.00%P
PTA +3.9PL +2.77SCS -.2DPR 4%DCE
PTA +3.28T +2.90UDC +2.43FLC 73%R 4/2013

S-S-I DOMAIN LITHIUM-ET +2250 G
840003004672704 100%RHA-NA TV TL TY TD
09/25/2010
PTA +1283M +45F +43P 75%R 4/2013
PTA +679NM -.01%F +.02%P 100%US
PTA +5.9PL 2.61SCS +1.5DPR 6%DCE
PTA +2.39T +2.16UDC +2.42FLC 75%R 4/2013

LADYS-MANOR DOMINIQUE-ET +2375 G
USA 70189445 100%RHA-NA
06/10/2011
PTA +1273M +77F +45P 73%R 4/2013
PTA +714NM +.11%F +.02%P
PTA +5.0PL 2.79SCS -.7DPR 4%DCE
PTA +4.03T +3.49UDC +2.28FLC 73%R 4/2013

*A very rare heifer in the industry, great TPI for her age
with huge type! Could breed a special one!
Backed by generations of EX cows!*

RONLEE TOYSTORY DOMAIN-ET +2022 G
USA 137974489 100%RHA-NA TV TL TY TD
3-06 90 EEVV GM 12/12 10/31/2006
PTA +2.81T +2.55UDC +2.04FLC 97%R 4/2013

GLEN-TOCTIN BOLT LUCILLE-ET +2217 G
USA 140018015 100%RHA-NA TY
3-04 87 VVEVV DOM 09/07/2008
PTA +2.83T +2.55UDC +2.61FLC 81%R 4/2013
AGE X DAYS MILK DCRM % FAT % PRT DCRC
*** 2-04 2 305 23580 100 4.1 966 3.2 753 100

LADYS-MANOR PL SHAMROCK-ET +2337 G
USA 68977120 100%RHA-NA TR TV TL TY TD
2-06 85 V+VV 09/11/2009
PTA +2.92T +2.18UDC +1.10FLC 76%R 4/2013

LADYS-MANOR ALLANAS DORA-ET +2067 G
USA 64673790 100%RHA-NA
4-09 92 EEEVE DOM 07/17/2007
PTA +618M +61F +31P 82%R 4/2013
PTA +422NM +.14%F +.05%P
PTA +1.6PL 2.78SCS -.17DPR 7%DCE
PTA +3.65T +3.30UDC +2.48FLC 83%R 4/2013
AGE X DAYS MILK DCRM % FAT % PRT DCRC
*** 1-10 2 305 23500 100 4.5 1051 3.2 763 95
365 27970 100 4.5 1253 3.3 929 95
*** 3-07 2 305 35330 100 4.3 1521 3.1 1083 95
365 40640 100 4.4 1780 3.2 1283 95

Next Dams: Allan EX-95 x Durchan EX-95



Ladys-Manor S Dahlia
Dam of Lot 29

29

EDG Dahlia Lithium 2168-ET

DOB: 04/11/2013 USA 72437715 GTPI +2212
PTA +1127M +59F +40P 73%R 4/2013
PTA +656NM +.07%F +.02%P
PTA +5.0PL +2.60SCS +.7DPR 5%DCE
PTA +2.45T +2.14UDC +2.07FLC 73%R 4/2013

S-S-I DOMAIN LITHIUM-ET +2250 G
840003004672704 100%RHA-NA TV TL TY TD
09/25/2010
PTA +1283M +45F +43P 75%R 4/2013
PTA +679NM -.01%F +.02%P 100%US
PTA +5.9PL 2.61SCS +1.5DPR 6%DCE
PTA +2.39T +2.16UDC +2.42FLC 75%R 4/2013
P9 50K GTPI

LADYS-MANOR S DAHLIA-ET +2373 G
USA 70189447 100%RHA-NA
06/12/2011
PTA +1902M +80F +54P 73%R 4/2013
PTA +732NM +.04%F -.01%P
PTA +5.2PL 2.78SCS -.7DPR 6%DCE
PTA +3.66T +3.33UDC +1.72FLC 73%R 4

*A very rare heifer in the industry, great TPI for her age
with huge type! Could breed a special one!
Backed by generations of EX cows!*

RONLEE TOYSTORY DOMAIN-ET +2022 G
USA 137974489 100%RHA-NA TV TL TY TD
3-06 90 EEVV GM 12/12 10/31/2006
PTA +2.81T +2.55UDC +2.04FLC 97%R 4/2013

GLEN-TOCTIN BOLT LUCILLE-ET +2217 G
USA 140018015 100%RHA-NA TY
3-04 87 VVEVV DOM 09/07/2008
PTA +2.83T +2.55UDC +2.61FLC 81%R 4/2013
AGE X DAYS MILK DCRM % FAT % PRT DCRC
*** 2-04 2 305 23580 100 4.1 966 3.2 753 100

LADYS-MANOR PL SHAMROCK-ET +2337 G
USA 68977120 100%RHA-NA TR TV TL TY TD
2-06 85 V+VV 09/11/2009
PTA +2.92T +2.18UDC +1.10FLC 76%R 4/2013

LADYS-MANOR ALLANAS DORA-ET +2067 G
USA 64673790 100%RHA-NA
4-09 92 EEEVE DOM 07/17/2007
PTA +618M +61F +31P 82%R 4/2013
PTA +422NM +.14%F +.05%P
PTA +1.6PL 2.78SCS -.7DPR 7%DCE
PTA +3.65T +3.30UDC +2.48FLC 83%R 4/2013
AGE X DAYS MILK DCRM % FAT % PRT DCRC
*** 1-10 2 305 23500 100 4.5 1051 3.2 763 95
365 27970 100 4.5 1253 3.3 929 95
*** 3-07 2 305 35330 100 4.3 1521 3.1 1083 95
365 40640 100 4.4 1780 3.2 1283 95

Next Dams: Allan EX-95 x Durchan EX-95

Butlerview



Butz-Hill Do You Misme-ET

Lot 30

30

Butz-Hill Do You Misme-ET

DOB: 06/01/2012 USA 71290839 GTPI +2210
 PTA +245M +42F +29P 70%R 4/2013
 PTA +603NM +.13%F +.08%P
 PTA +4.7PL 2.74SCS +1.5DPR 5%DCE
 PTA +2.66T +3.16UDC +2.67FLC 70%R 4/2013
CURRENTLY FLUSH – READY TO MAKE \$\$

MOUNTFIELD SSI DCY MOGUL-ET +2403 G
 840003006972816 100%RHA-NA TR TV TL TY TD
 06/22/2010
 PTA +1449M +78F +50P 76%R 4/2013
 PTA +784NM +.10%F +.03%P 100%US
 PTA +4.9PL 2.66SCS +.0DPR 5%DCE
 PTA +3.03T +3.19UDC +3.17FLC 76%R 4/2013
 P9 50K GTPI

MORSAN MAN D MISSY-ET +2200 G
 CAN 11099278 100%RHA-NA
 2-06 85 VV+V+ 06/01/2010
 PTA +156M +69F +43P 78%R 4/2013
 PTA +563NM +.24%F +.15%P
 PTA +2.0PL 2.70SCS +1.0DPR 5%DCE
 PTA +2.73T +2.13UDC +2.27FLC 77%R 4/2013

*Dam of the #2 GTPI Bull in the WORLD, Butz-Hill
 Supersire +2604 GTPI!!
 Her Galaxy and McCutchen daughters are +2473 and
 +2445 GTPI! Highest family members from the Missys!*

COYNE-FARMS DORCY-ET +2251 G
 USA 139005002 100%RHA-NA BY TV TL
 4-09 87 VVV+ 09/17/2007
 PTA +2.97T +3.17UDC +2.97FLC 96%R 4/2013

MOUNTFIELD MARSH MAXINE-ET +2012 G
 USA 62784081 100%RHA-NA
 2-07 88 VV+VE DOM 04/23/2006
 PTA +2.07T +2.24UDC +2.39FLC 86%R 4/2013
 AGE X DAYS MILK DCRM % FAT % PRT DCRC
 *** 2-03 2 159 14320 4.3 611 3.2 454

LONG-LANGS OMAN OMAN-ET +2185 G
 USA 135746776 100%RHA-NA TV TL TY TD
 4-11 85 VVV+ GM 12/12 04/30/2004
 PTA +2.17T +1.64UDC +1.96FLC 98%R 4/2013

VALLEYVILLE DOLMAN MISSY +1790 G
 CAN 9720342 100%RHA-NA
 CAN 4Y VG 89 04/09/2008
 PTA +497M +63F +29P 84%R 4/2013
 PTA +222NM +.17%F +.05%P
 PTA -1.7PL 2.86SCS -1.6DPR 7%DCE
 PTA +2.68T +1.36UDC +1.58FLC 78%R 4/2013
 AGE X DAYS MILK DCRM % FAT % PRT DCRC
 CAN 2-03 2 305 29477 4.0 1181 3.3 960
 322 30899 4.0 1245 3.3 1014

**Next Dams: Eastside Lewisdale Gold Missy EX-95
 x Outside Abel VG88 26***

Butlerview Farm



*Mystique Man O Man Armada VG86-2yrs
Dam of Lots 31 & 32*

31

EDG Armada Lithium 705

DOB: 03/25/2013 USA 72127494 GTPI +2291
PTA +864M +78F +50P 72%R 4/2013
PTA +699NM +.18%F +.09%P
PTA +4.1PL +2.65SCS -0.1DPR 5%DCE
PTA +2.58T +2.50UDC +2.47FLC 72%R 4/2013

S-S-I DOMAIN LITHIUM-ET +2250 G
840003004672704 100%RHA-NA TV TL TY TD
09/25/2010
PTA +1283M +45F +43P 75%R 4/2013
PTA +679NM -.01%F +.02%P 100%US
PTA +5.9PL 2.61SCS +1.5DPR 6%DCE
PTA +2.39T +2.16UDC +2.42FLC 75%R 4/2013
P9 3K GTPI

MYSTIQUE MAN O MAN ARMADA-ET +2297 G
CAN 106931121 100%RHA-NA
2-03 86 VVGVV 01/18/2011
PTA +1568M +86F +62P 72%R 4/2013
PTA +687NM +.10%F +.05%P
PTA +3.0PL 2.80SCS -.4DPR 6%DCE
PTA +2.71T +2.19UDC +2.49FLC 71%R 4/2013

#6 GTPI Man O Man in North America!!

RONELEE TOYSTORY DOMAIN-ET +2022 G
USA 137974489 100%RHA-NA TV TL TY TD
3-06 90 EEVV GM 12/12 10/31/2006
PTA +2.81T +2.55UDC +2.04FLC 97%R 4/2013

GLEN-TOCTIN BOLT LUCILLE-ET +2217 G
USA 140018015 100%RHA-NA TY
3-04 87 VVEVV DOM 09/07/2008
PTA +2.83T +2.55UDC +2.61FLC 81%R 4/2013
AGE X DAYS MILK DCRM % FAT % PRT DCRC
*** 2-04 2 305 23580 100 4.1 966 3.2 753 100

LONG-LANGS OMAN OMAN-ET +2185 G
USA 135746776 100%RHA-NA TV TL TY TD
4-11 85 VVV+ GM 12/12 04/30/2004
PTA +2.17T +1.64UDC +1.96FLC 98%R 4/2013

MYSTIZUE GOLDWYN ARABI +1884 G
CAN 103928377 100%RHA-NA
CAN 04Y VG 87 04/07/2007
PTA +460M +45F +26P 84%R 4/2013
PTA +341NM +.11%F +.05%P
PTA +.7PL 2.67SCS -1.2DPR 8%DCE
PTA +2.56T +1.96UDC +2.58FLC 76%R 4/2013
AGE X DAYS MILK DCRM % FAT % PRT DCRC
CAN 2-02 2 305 23972 4.5 1071 3.4 811
365 27727 4.6 1265 3.5 958
CAN 4-01 2 305 30906 4.1 1263 3.2 999
365 35513 4.2 1479 3.3 1185

Next Dams: VG88-2yrs x EX-94-3E x EX-90

Butlerview Farm



Mystique Man O Man Armada VG86-2yrs
 Dam of Lots 31 & 32

32

EDG Armada Meridian 2100

DOB: 03/11/13 USA 72437647 GTPI +2204
 PTA +2093M +59F +64P 72%R 4/2013
 PTA +487NM -.07%F -.00%P
 PTA +0.8PL +2.84SCS -117DPR 5%DCE
 PTA +3.59T +2.44UDC +2.67FLC 72%R 4/2013

S-S-I DOMAIN LITHIUM-ET +2250 G
 840003004672704 100%RHA-NA TV TL TY TD
 09/25/2010
 PTA +1283M +45F +43P 75%R 4/2013
 PTA +679NM -.01%F +.02%P 100%US
 PTA +5.9PL 2.61SCS +1.5DPR 6%DCE
 PTA +2.39T +2.16UDC +2.42FLC 75%R 4/2013

MYSTIQUE MAN O MAN ARMADA-ET +2297 G
 CAN 106931121 100%RHA-NA
 2-03 86 VVGVV 01/18/2011
 PTA +1568M +86F +62P 72%R 4/2013
 PTA +687NM +.10%F +.05%P
 PTA +3.0PL 2.80SCS -1.4DPR 6%DCE
 PTA +2.71T +2.19UDC +2.49FLC 71%R 4/2013

#6 GTPI Man O Man in North America!!

RONELEE TOYSTORY DOMAIN-ET +2022 G
 USA 137974489 100%RHA-NA TV TL TY TD
 3-06 90 EEVV GM 12/12 10/31/2006
 PTA +2.81T +2.55UDC +2.04FLC 97%R 4/2013

GLEN-TOCTIN BOLT LUCILLE-ET +2217 G
 USA 140018015 100%RHA-NA TY
 3-04 87 VVEVV DOM 09/07/2008
 PTA +2.83T +2.55UDC +2.61FLC 81%R 4/2013
 AGE X DAYS MILK DCRM % FAT % PRT DCRC
 *** 2-04 2 305 23580 100 4.1 966 3.2 753 100

LONG-LANGS OMAN OMAN-ET +2185 G
 USA 135746776 100%RHA-NA TV TL TY TD
 4-11 85 VVV+ GM 12/12 04/30/2004
 PTA +2.17T +1.64UDC +1.96FLC 98%R 4/2013

MYSTIZUE GOLDWYN ARABI +1884 G
 CAN 103928377 100%RHA-NA
 CAN 04Y VG 87 04/07/2007
 PTA +460M +45F +26P 84%R 4/2013
 PTA +341NM +.11%F +.05%P
 PTA +.7PL 2.67SCS -1.2DPR 8%DCE
 PTA +2.56T +1.96UDC +2.58FLC 76%R 4/2013
 AGE X DAYS MILK DCRM % FAT % PRT DCRC
 CAN 2-02 2 305 23972 4.5 1071 3.4 811
 365 27727 4.6 1265 3.5 958
 CAN 4-01 2 305 30906 4.1 1263 3.2 999
 365 35513 4.2 1479 3.3 1185

Next Dams: VG88-2yrs x EX-94-3E x EX-90

Butlerview



Farnear-TBR Bswr Boyana VG85-2yrs
 Dam of Lot 33 & 34

33

MS Boyana Uno Brinley

DOB: 8/6/12 USA 71494817 GTPI +2388
 PTA +900M +50F +39P 72%R 4/2013
 PTA +673NM +.06%F +.04%P
 PTA +5.6PL +2.69SCS +.3DPR 6%DCE
 PTA +4.18T +4.00UDC +2.99FLC 71%R 4/2013
INCREDIBLE FLUSH HEIFER!!

34

MS Boy Uno Beyonce

DOB: 1/22/13 USA 72102171 GTPI +2361
 PTA +896M +61F +39P 37%R 4/2013
 PTA +711NM +.11%F +.04%P
 PTA +6.1PL +2.78SCS +1.2DPR 5%DCE
 PTA +3.40T +3.04UDC +2.93FLC 71%R 4/2013

AMIGHETTI NUMERO UNO-ET +2456 G

ITA 17990915143 100%RHA-NA TV TL TY TD
 07/15/2010
 PTA +992M +89F +47P 76%R 4/2013
 PTA +836NM +.20%F +.06%P 100%US
 PTA +6.3PL 2.59SCS +1.3DPR 6%DCE
 PTA +3.08T +2.70UDC +2.21FLC 75%R 4/2013

LONG-LANGS OMAN OMAN-ET +2185 G

USA 135746776 100%RHA-NA TV TL TY TD
 4-11 85 VVV+ GM 12/12 04/30/2004
 PTA +2.17T +1.64UDC +1.96FLC 98%R 4/2013

AMIGHETTI SHOTTLE AVE-ET +2062 G

ITA 17990346074 100%RHA-NA
 PTA +2.84T +2.49UDC +2.40FLC 80%R 4/2013

FARNEAR-TBR BOWSR BOYANA-ET +2143 G

USA 69822164 99%RHA-I
 2-08 85 V++VV 08/10/2010
 PTA +780M +13F +32P 73%R 4/2013
 PTA +448NM -.06%F +.03%P
 PTA +4.7PL 2.95SCS +.1DPR 5%DCE
 PTA +3.67T +3.60UDC +3.19FLC 72%R 4/2013

LAESCHWAY JET BOWSER-ET +1940 G

USA 64872951 98%RHA-I TV TL TY TD
 4-05 83 VVVV 04/22/2008
 PTA +1.62T +2.03UDC +1.83FLC 96%R 4/2013

KLASSIC MAC BARB-ET +1735 G

USA 61143553 100%RHA-NA
 2-11 85 +V+VV 03/02/2008
 PTA +166M +11F +9P 82%R 4/2013
 PTA +212NM +.02%F +.02%P
 PTA +1.4PL 2.87SCS -.1DPR 5%DCE
 PTA +2.22T +2.17UDC +1.68FLC 81%R 4/2013
 AGE X DAYS MILK DCRM % FAT % PRT DCRC
 *** 2-05 2 305 26840 95 4.0 1075 3.4 900 95
 365 30440 95 4.0 1206 3.3 1011 95

Her daughters are the #10 & #11 UDC heifers in the world! Transmitting big time type and udders!

Next Dams: Shottle EX-90 x PR Barbie EX-92 x Juror Brina EX-92

Butlerview Farm



De-Su 188 (Chartopper)
 Dam of Lot 35

35

EDG CT High Center 2046-ET

DOB: 02/13/2013 USA 72437593 GTPI +2233
 PTA -167M +70F +25P 70%R 4/2013
 PTA +739NM +.29%F +.12%P
 PTA +6.6PL 2.53SCS +1.8DPR 5%DCE
 PTA +1.83T +1.76UDC +2.42FLC 70%R 4/2013

JOLICAP HIGHWAY-ET +2243 G
 CAN 106347766 100%RHA-NA TV TL TY TD
 10/24/2010
 PTA +893M +69F +33P 76%R 4/2013
 PTA +743NM +.13%F +.02%P 100%US
 PTA +6.9PL 2.70SCS +2.0DPR 5%DCE
 PTA +2.10T +1.41UDC +1.92FLC 74%R 4/2013
 P9 3K GTPI

DE-SU 199-ET +2392 G
 USA 69490353 100%RHA-NA
 07/15/2010
 PTA +729M +92F +57P 72%R 4/2013
 PTA +798NM +.24%F +.13%P
 PTA +4.8PL 2.43SCS +1.1DPR 5%DCE
 PTA +2.49T +1.86UDC +2.74FLC 73%R 4/2013

Previous #1 GTPI heifer in the world!
Her Numero Uno daughter sold for \$165,000 at the
Genomic Giant Sale 2013!
Just fresh and has a big frame with outstanding udder!

BOSSIDE ALTAROSS-ET +1946 G
 USA 62085114 100%RHA-NA TV TL TY
 GM 12/11 01/30/2005
 PTA +1.31T +1.35UDC +1.63FLC 95%R 4/2013

TRAMILDA-N BAXTER EMILY-ET +2209 G
 USA 139232811 100%RHA-NA
 CAN 02Y VG 85 02/10/2008
 PTA +2.32T +1.73UDC +2.26FLC 77%R 4/2013
 AGE X DAYS MILK DCRM % FAT % PRT DCRC
 CAN 2-05 2 282 30946 4.2 1287 3.2 1001

DE-SU WATSON +2140 G
 USA 64700377 100%RHA-NA TR TV TL TY TD
 4-07 90 EEVV 03/19/2008
 PTA +2.25T +1.76UDC +1.71FLC 90%R 4/2013

PINE-TREE MISSY MIRANDA-ET +1892 G
 USA 61733095 100%RHA-NA
 4-03 86 VVV+V DOM 05/01/2004
 PTA +138M +52F +32P 94%R 4/2013
 PTA +452NM +.18%F +.11%P
 PTA +2.9PL 2.79SCS +1.0DPR 7%DCE
 PTA +.77T +.87UDC +1.42FLC 93%R 4/2013
 AGE X DAYS MILK DCRM % FAT % PRT DCRC
 *** 2-01 2 305 23580 100 4.3 1025 3.5 828 100
 365 28350 100 4.3 1232 3.6 1007 100
 *** 3-08 3 305 30980 99 4.9 1532 3.7 1144 91
 365 35550 99 4.9 1730 3.7 1325 91
 ** 7-10 3 305 27830 98 4.1 1153 3.2 899 81
 LIFE 1320 109980 4.5 4904 3.6 3949

Butlerview Farms



*Ammon-Peachy Super Miki VG85-2yrs
Dam of Lot 36*

36

EDG Miki Snow 2119-ET

DOB: 03/21/2013 USA 72437666 GTPI +2285
PTA +1291M +60F +58P 75%R 4/2013
PTA +664NM +.04%F +.07%P
PTA +4.3PL +2.66SCS +.1DPR 5%DCE
PTA +2.91T +2.15UDC +1.86FLC 74%R 4/2013
#8 GTPI LET IT SNOW IN THE WORLD!!

VELTHUIS LET IT SNOW-ETS +2237 G
CAN 11294722 100%RHA-NA TV TL TY TD
05/04/2011
PTA +1925M +70F +73P 75%R 4/2013
PTA +561NM +.00%F +.06%P 100%US
PTA +2.2PL 2.91SCS -1.7DPR 7%DCE
PTA +3.00T +2.60UDC +2.30FLC 74%R 4/2013

AMMON-PEACHEY SUPER MIKI-ET +2244 G
USA 66339386 100%RHA-NA
2-06 85 +VVG 06/10/2010
PTA +1300M +41F +45P 78%R 4/2013
PTA +657NM -.02%F +.02%P
PTA +5.0PL 2.51SCS +1.2DPR 5%DCE
PTA +2.83T +2.02UDC +1.69FLC 80%R 4/2013
AGE X DAYS MILK DCRM % FAT % PRT DCRC
* 2-03 2 140 10300 5.0 510 3.0 307

*Sold for \$150,000 at the 2011 International Intrigue!
Her Colt 45 1st Choice sold for \$62,000 CAN*

FLEVO GENETICS SNOWMAN-ET +2135 G
NLD 388965513 100%RHA-NA TV TL
01/14/2005
PTA +2.13T +1.61UDC +2.52FLC 89%R 4/2013

MSCHARTROIS PLANET LEONI-ET +2067 G
USA 66050509 100%RHA-NA
07/07/2009
PTA +2.79T +2.40UDC +1.32FLC 77%R 4/2013

CHARLESDALE SUPERSTITION-ET +2107 G
USA 62065919 100%RHA-NA TR TV TL TY TD
GM 12/12 12/29/2004
PTA +1.91T +1.75UDC +1.02FLC 99%R 4/2013

PINE-TREE MARTHA SHEEN-ET +2139 G
USA 62443682 100%RHA-NA TY
3-04 86 VV+VV DOM 01/01/2006
PTA +1069M +68F +46P 88%R 4/2013
PTA +514NM +.11%F +.05%P
PTA +2.1PL 2.73SCS -.1DPR 6%DCE
PTA +2.97T +1.84UDC +1.94FLC 89%R 4/2013
AGE X DAYS MILK DCRM % FAT % PRT DCRC
** 1-11 3 305 26750 95 4.0 1075 3.0 813 92
365 31210 95 4.2 1305 3.1 968 92

Dam of several sons in AI

Next Dams: Oman VG86 x Rudy Missy EX-92

Butlerview Farm



*Pine-Shelter Claire Wood VG87-2yrs
Dam of Lot 37*

37

EDG Clairewood 731-ET

DOB: 04/09/2013 USA 72127520 GTPI +2109
 PTA +1108M +22F +30P 75%R 4/2013
 PTA +410NM -.07%F -.02%P
 PTA +3.4PL +2.60SCS -.7DPR 7%DCE
 PTA +4.14T +3.23UDC +3.02FLC 74%R 4/2013
#1 TYPE SUPLEX IN THE WORLD!!

BLUE-HORIZON ALTASUPLEX +2292 G
 USA 68999396 100%RHA-NA TV TL TY TD
 02/12/2011
 PTA +1299M +14F +40P 75%R 4/2013
 PTA +700NM -.13%F +.00%P 100%US
 PTA +7.5PL 2.63SCS +2.6DPR 4%DCE
 PTA +2.82T +2.55UDC +1.91FLC 75%R 4/2013
 P9 3K GTPI

PINE-SHELTER CLAIRE WOOD-ET +2090 G
 USA 69619061 VG87-2yrs CAN
 09/04/2010
 PTA +839M +52F +28P 72%R 4/2013
 PTA +319NM +.08%F +.01%P
 PTA +.7PL 2.81SCS -1.1DPR 8%DCE
 PTA +4.40T +3.49UDC +3.51FLC 73%R 4/2013

*Claire wood is the #1 type milking female in the world!
 Her Mayfield is the #1 type dtr in the world (+4.92)
 Her daughters are #1 & #2 type Uno dtrs in the world!!*

CHARLESDALE SUPERSTITION-ET +2107 G
 USA 62065919 100%RHA-NA TR TV TL TY TD
 GM 12/12 12/29/2004
 PTA +1.91T +1.75UDC +1.02FLC 99%R 4/2013

BLUE-HORIZON PLAN EDITH-ET +2154 G
 USA 140694749 100%RHA-NA
 3-00 85 ++V+V DOM 11/25/2008
 PTA +2.58T +2.40UDC +1.31FLC 80%R 4/2013
 AGE X DAYS MILK DCRM % FAT % PRT DCRC
 *** 2-02 2 305 26610 98 3.8 1009 3.2 847 98

MAPLE-DOWNS-I G W ATWOOD-ET +1822 G
 CAN 8956379 100%RHA-NA TR TV TL TY TD
 4-06 90 EE+V 02/24/2007
 PTA +4.57T +3.17UDC +3.75FLC 98%R 4/2013

PINE-SHELTER CHELSY SHO-ET +1835 G
 USA 137411694 100%RHA-NA
 2-06 86 VV+VV DOM 03/06/2006
 PTA +781M +26F +27P 86%R 4/2013
 PTA +232NM -.01%F +.01%P
 PTA +.6PL 2.94SCS -.2DPR 8%DCE
 PTA +2.52T +2.25UDC +2.05FLC 85%R 4/2013
 AGE X DAYS MILK DCRM % FAT % PRT DCRC
 *** 2-00 3 305 26060 97 3.7 955 3.0 788 97
 365 32050 97 3.7 1174 3.1 978 97

Next Dam: Pine-Shelter Cheyenne EX-95-3E
 Grand Champion, WDE 2003

Butlerview Farm



Regancrest G Brocade EX-92
2nd Dam of Lot 38

38

Ms Brooks Mogul Brookly-ET

DOB: 21/27/2012 USA 72127390 GTPI +2320
PTA +1116M +71F +42P 71%R 4/2013
PTA +697NM +.11%F +.03%P
PTA +4.5PL 2.64SCS -.2DPR 6%DCE
PTA +3.23T +3.10UDC +3.11FLC 71%R 4/2013

MOUNTFIELD SSI DCY MOGUL-ET +2403 G
840003006972816 100%RHA-NA TR TV TL TY TD
06/22/2010
PTA +1449M +78F +50P 76%R 4/2013
PTA +784NM +.10%F +.03%P 100%US
PTA +4.9PL 2.66SCS +.0DPR 5%DCE
PTA +3.03T +3.19UDC +3.17FLC 76%R 4/2013
P9 50K GTPI

FARNEAR BROCADES BROOKS-ET +2198 G
USA 69822300 100%RHA-NA
02/08/2011
PTA +781M +48F +32P 76%R 4/2013
PTA +589NM +.07%F +.03%P
PTA +4.6PL 2.67SCS +.3DPR 6%DCE
PTA +3.22T +3.20UDC +2.12FLC 76%R 4/2013

COYNE-FARMS DORCY-ET +2251 G
USA 139005002 100%RHA-NA BY TV TL
4-09 87 VVV+ 09/17/2007
PTA +2.97T +3.17UDC +2.97FLC 96%R 4/2013

MOUNTFIELD MARSH MAXINE-ET +2012 G
USA 62784081 100%RHA-NA
2-07 88 VV+VE DOM 04/23/2006
PTA +2.07T +2.24UDC +2.39FLC 86%R 4/2013
AGE X DAYS MILK DCRM % FAT % PRT DCRC
*** 2-03 2 159 14320 4.3 611 3.2 454

DE-SU OBSERVER-ET +2332 G
USA 65917481 100%RHA-NA TR TV TL TY TD
4-06 90 EVEV 11/07/2008
PTA +2.70T +3.02UDC +.89FLC 91%R 4/2013

REGANCREST G BROCADE-ET +1852 G
USA 62496933 100%RHA-NA TL
4-07 92 EEEEE DOM 01/08/2006
PTA -222M -1F +2P 89%R 4/2013
PTA +214NM +.03%F +.03%P
PTA +1.3PL 2.68SCS -.8DPR 5%DCE
PTA +3.62T +3.55UDC +2.93FLC 90%R 4/2013
AGE X DAYS MILK DCRM % FAT % PRT DCRC
*** 2-01 2 305 28690 97 4.0 1137 3.2 920 94
365 32680 97 3.9 1278 3.3 1064 94
*** 4-00 2 305 33340 95 3.8 1266 3.2 1058 95
365 38890 95 3.9 1517 3.3 1273 95

Butlerview Farm



R-E-W Gold Chip Delight-ET
Lot 39

39

R-E-W Gold Chip Delight-ET

DOB: 04/19/12 USA 71588852 GTPI +2174
 PTA +619M +35F +20P 70%R 4/2013
 PTA +522NM +.05%F +.01%P
 PTA +3.9PL 2.51SCS +.4DPR 3%DCE
 PTA +3.49T +2.92UDC +3.33FLC 70%R 4/2013
CURRENTLY FLUSHING!!

MR CHASSITY GOLD CHIP-ET +2090 G
 USA 140145553 100%RHA-NA TR TV TL TY TD
 3-01 92 EEVE 09/04/2009
 PTA +710M +37F +15P 76%R 4/2013
 PTA +449NM +.04%F -.03%P 100%US
 PTA +2.8PL 2.58SCS -.6DPR 3%DCE
 PTA +3.87T +3.10UDC +3.13FLC 76%R 4/2013
 P9 50K GTPI

REGANCREST-BH SUPER DELISH +2001 G
 USA 66625310 100%RHA-NA
 2-10 83 V++++ 04/01/2010
 PTA +855M +16F +18P 78%R 4/2013
 PTA +473NM -.06%F -.03%P
 PTA +4.8PL 2.64SCS +1.4DPR 4%DCE
 PTA +2.23T +2.28UDC +1.51FLC 80%R 4/2013

BRAEDALE GOLDWYN +1944 G
 CAN 10705608 100%RHA-NA TV TL TY
 CAN 08Y GP 84 GM 12/11 01/03/2000
 PTA +3.00T +2.57UDC +2.46FLC 99%R 4/2013

REGANCREST S CHASSITY-ET +2071 G
 USA 62496899 100%RHA-NA TL TY
 4-05 92 EEEVE GMD DOM 12/13/2005
 PTA +3.44T +2.43UDC +2.38FLC 85%R 4/2013
 AGE X DAYS MILK DCRM % FAT % PRT DCRC
 *** 3-10 2 365 42280 93 4.3 1798 2.5 1070 93

CHARLESDALE SUPERSTITION-ET +2107 G
 USA 62065919 100%RHA-NA TR TV TL TY TD
 GM 12/12 12/29/2004
 PTA +1.91T +1.75UDC +1.02FLC 99%R 4/2013

REGANCREST-BH DELICA-ET +1775 G
 USA 62497193 100%RHA-NA
 3-11 88 VEVVV 10/08/2006
 PTA +630M +17F -1P 80%R 4/2013
 PTA +271NM -.02%F -.07%P
 PTA +2.5PL 2.64SCS +.3DPR 7%DCE
 PTA +2.43T +2.79UDC +.76FLC 80%R 4/2013
 AGE X DAYS MILK DCRM % FAT % PRT DCRC
 *** 2-05 2 305 28180 102 3.7 1056 2.8 797 95
 317 29150 102 3.7 1092 2.8 827 95
 ** 3-05 3 305 27530 96 3.6 979 2.7 756 90
 365 31810 96 3.5 1121 2.7 871 90

Next Dams: Windsor-Manor Z-Delight EX-93-2E x Windsor-Manor Rud Zip EX-95-3E x EX-90-3E

Butlerview Farms



Sandy-Valley Shmk Devrie-ET
Lot 40

40

Sandy-Valley Shmk Devrie-ET

DOB: 10/15/2011 USA 70811484 GTPI +2322
 PTA +1701M +78F +60P 72%R 4/2013
 PTA +710NM +.06%F +.03%P
 PTA +5.1PL 2.92SCS -.8DPR 6%DCE
 PTA +3.19T +2.58UDC +2.05FLC 71%R 4/2013

LADYS-MANOR PL SHAMROCK-ET +2337 G
 USA 68977120 100%RHA-NA TR TV TL TY TD
 2-06 85 V+VV 09/11/2009
 PTA +1996M +69F +53P 76%R 4/2013
 PTA +789NM -.02%F -.03%P 100%US
 PTA +7.1PL 2.81SCS +.4DPR 4%DCE
 PTA +2.92T +2.18UDC +1.10FLC 76%R 4/2013

REGAN-ALH BLVR DIVINA-ET +1915 G
 USA 64943191 100%RHA-NA
 2-10 87 VVVVV 04/21/2008
 PTA +751M +52F +43P 81%R 4/2013
 PTA +433NM +.09%F +.08%P
 PTA +2.5PL 2.93SCS -.5DPR 7%DCE
 PTA +1.70T +1.15UDC +1.42FLC 81%R 4/2013
 AGE X DAYS MILK DCRM % FAT % PRT DCRC
 *** 2-03 2 305 26740 95 4.3 1158 3.4 903 95
 365 31320 95 4.3 1354 3.4 1066 95

ENSENADA TABOO PLANET-ET +2176 G
 USA 60597003 100%RHA-NA TR TV TL TY TD
 4-11 90 EEVV GM 12/12 03/03/2003
 PTA +1.93T +1.44UDC -.47FLC 99%R 4/2013

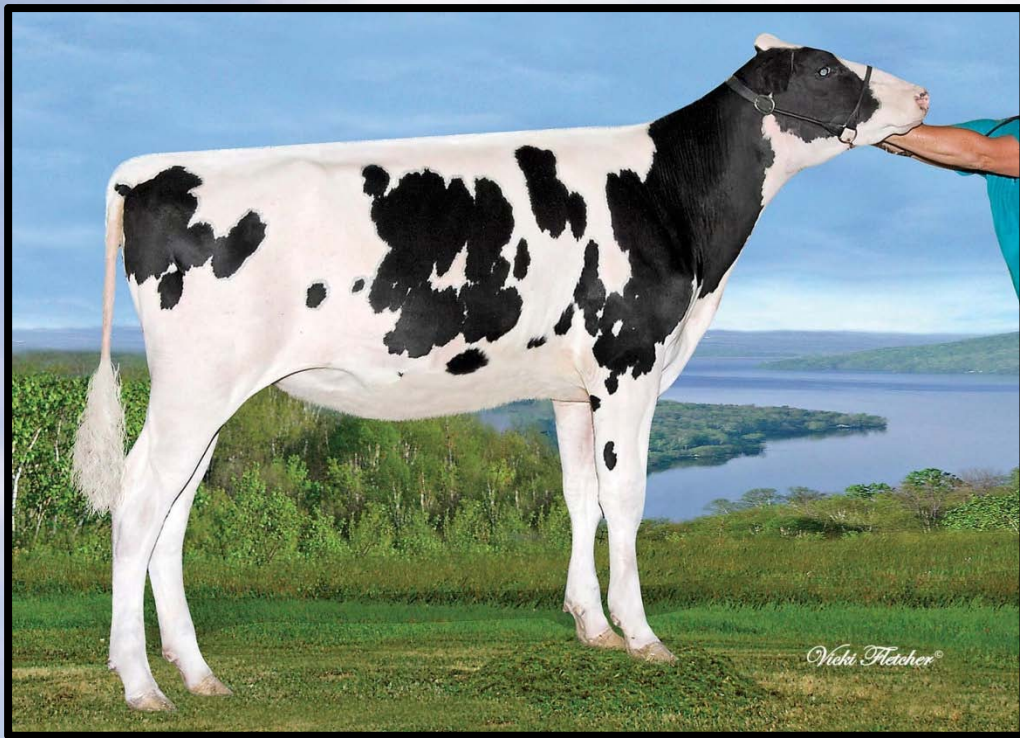
LADYS-MANOR RUBY D SHAWN-ET +2117 G
 USA 62360741 100%RHA-NA TY
 5-04 90 EEVVE GMD DOM 10/14/2005
 PTA +3.46T +3.02UDC +2.26FLC 88%R 4/2013
 AGE X DAYS MILK DCRM % FAT % PRT DCRC
 *** 4-04 2 305 33440 100 4.7 1561 3.1 1033 95
 365 37920 100 4.8 1808 3.2 1208 95

END-ROAD PVF BOLIVER-ET +1804 G
 USA 123586443 100%RHA-NA TV TL TY TD
 11-11 96 EEEE GM 8/09 11/27/1998
 PTA +1.22T +1.28UDC -.24FLC 99%R 4/2013

A-L-H DESTINY-ET +1832 G
 USA 61361722 100%RHA-NA
 3-02 87 VVVVV GMD DOM 04/24/2004
 PTA +409M +18F +36P 94%R 4/2013
 PTA +314NM +.01%F +.09%P
 PTA +2.0PL 2.92SCS +.5DPR 7%DCE
 PTA +1.43T +.85UDC +2.99FLC 93%R 4/2013
 AGE X DAYS MILK DCRM % FAT % PRT DCRC
 *** 2-04 2 305 27590 102 3.9 1072 3.4 938 95
 365 33200 102 3.8 1258 3.4 1139 95

**Next Dams: Durham EX-92 x Cleitus EX-92-4E x
 Markwell Bstar E Raven EX-95-3E x EX-92 x EX-94**





Nova-TMJ Jeeves Eleta VG86-3yrs
 Dam of Lot 41

41

Ms Lookout PSC Smrk Elle-ET

DOB: 12/10/2011 USA 71302830 GTPI +2298
 PTA +857M +71F +35P 70%R 4/2013
 PTA +772NM +.15%F +.03%P
 PTA +7.0PL 2.91SCS +2.5DPR 5%DCE
 PTA +2.41T +2.50UDC +.76FLC 70%R 4/2013
DONOR DAM – BRED 6/6 TANGO

LADYS-MANOR PL SHAMROCK-ET +2337 G
 USA 68977120 100%RHA-NA TR TV TL TY TD
 2-06 85 V+VV 09/11/2009
 PTA +1996M +69F +53P 76%R 4/2013
 PTA +789NM -.02%F -.03%P 100%US
 PTA +7.1PL 2.81SCS +.4DPR 4%DCE
 PTA +2.92T +2.18UDC +1.10FLC 76%R 4/2013
 50K GTPI

ENSENADA TABOO PLANET-ET +2176 G
 USA 60597003 100%RHA-NA TR TV TL TY TD
 4-11 90 EEVV GM 12/12 03/03/2003
 PTA +1.93T +1.44UDC -.47FLC 99%R 4/2013

LADYS-MANOR RUBY D SHAWN-ET +2117 G
 USA 62360741 100%RHA-NA TY
 5-04 90 EEVVE GMD DOM 10/14/2005
 PTA +3.46T +3.02UDC +2.26FLC 88%R 4/2013
 AGE X DAYS MILK DCRM % FAT % PRT DCRC
 *** 4-04 2 305 33440 100 4.7 1561 3.1 1033 95
 365 37920 100 4.8 1808 3.2 1208 95

NOVA-TMJ JEEVES ELETA-ET +2225 G
 USA 66614910 100%RHA-NA
 3-03 86 VVVVV 11/06/2009
 PTA +429M +72F +28P 78%R 4/2013
 PTA +680NM +.21%F +.06%P
 PTA +5.4PL 2.88SCS +2.7DPR 6%DCE
 PTA +2.41T +2.03UDC +1.79FLC 80%R 4/2013
 AGE X DAYS MILK DCRM % FAT % PRT DCRC
 *** 2-10 2 198 13610 4.6 628 3.4 465

KED OUTSIDE JEEVES-ET +1913 G
 USA 134438230 100%RHA-NA TV TL TY
 GM 12/11 05/22/2003
 PTA +1.37T +.97UDC +1.74FLC 99%R 4/2013

NOVA-TMJ GOLDEN ECHO-ETS +1965 G
 USA 137728181 100%RHA-NA
 3-05 88 EVVVE DOM 04/05/2006
 PTA -60M +53F +13P 86%R 4/2013
 PTA +343NM +.21%F +.06%P
 PTA +.5PL 2.83SCS +.9DPR 6%DCE
 PTA +3.18T +2.53UDC +2.26FLC 87%R 4/2013
 AGE X DAYS MILK DCRM % FAT % PRT DCRC
 *** 2-05 2 305 26790 94 3.9 1049 3.2 857 94
 365 31150 94 4.0 1231 3.2 999 94

*#1 Jeeves daughter in the world!!
 Has over 21 VG daughters!*

**Next Dams: Ufm-Dubs Eroy VG87-2yrs x EX-90-2E
 x EX-90 x VG87 x VG85**

Butlerview Farms



Miller-FF Bookem Esther-ET

Lot 42

42

Miller-FF Bookem Esther-ET

DOB: 06/19/2011 USA 69916620 GTPI +2330
 PTA +1484M +55F +51P 73%R 4/2013
 PTA +671NM +.00%F +.02%P
 PTA +5.3PL 2.65SCS -.3DPR 5%DCE
 PTA +3.51T +2.92UDC +2.36FLC 73%R 4/2013
DUE 8/8/13 TO MASSEY

DE-SU 521 BOOKEM-ET +2204 G
 USA 66636657 99%RHA-I TR TV TL TY TD
 3-08 86 VV+V 02/21/2009
 PTA +1335M +47F +52P 82%R 4/2013
 PTA +654NM +.00%F +.05%P 100%US
 PTA +5.6PL 2.87SCS +.1DPR 5%DCE
 PTA +2.67T +2.26UDC +1.44FLC 78%R 4/2013
 50K GTPI

NOVA SHOTTLE EVELYN-ET +2254 G
 USA 66452835 100%RHA-NA
 3-00 87 VVVVV 10/10/2009
 PTA +624M +73F +29P 79%R 4/2013
 PTA +611NM +.19%F +.04%P
 PTA +3.6PL 2.60SCS +.7DPR 5%DCE
 PTA +3.23T +2.91UDC +2.35FLC 81%R 4/2013
 AGE X DAYS MILK DCRM % FAT % PRT DCRC
 * 2-00 2 305 28620 95 4.4 1269 3.5 993 95X
 365 34290 95 4.6 1566 3.5 1200 95

WOW – Her Supersire daughter is +2592 GTPI
 Her Windbrook daughter is the #1 GTPI worldwide

ENSENADA TABOO PLANET-ET +2176 G
 USA 60597003 100%RHA-NA TR TV TL TY TD
 4-11 90 EEVV GM 12/12 03/03/2003
 PTA +1.93T +1.44UDC -.47FLC 99%R 4/2013

CLEAR-ECHO 822 RAMO 1199-ET +1699 G
 USA 61765027 99%RHA-I TL
 2-06 86 +VGEV DOM 10/17/2004
 PTA +1.52T +1.32UDC +1.78FLC 93%R 4/2013
 AGE X DAYS MILK DCRM % FAT % PRT DCRC
 *** 2-00 3 305 26750 97 3.5 944 3.1 828 95
 365 32190 97 3.4 1103 3.1 1003 95

PICSTON SHOTTLE-ET +1975 G
 GBR 598172 100%RHA-NA TV TL TY
 GM 12/11 07/23/1999
 PTA +2.54T +1.95UDC +1.73FLC 99%R 4/2013

NOVA-TMJ GOLDEN EDIE-ETS +1948 G
 USA 137735523 100%RHA-NA
 3-05 87 VVVVV DOM 04/05/2006
 PTA -100M +48F +14P 86%R 4/2013
 PTA +328NM +.20%F +.07%P
 PTA +.5PL 2.81SCS +1.1DPR 6%DCE
 PTA +2.98T +2.45UDC +2.01FLC 86%R 4/2013
 AGE X DAYS MILK DCRM % FAT % PRT DCRC
 *** 2-04 2 305 25420 95 4.8 1219 3.2 815 95X
 365 30230 95 4.8 1445 3.2 980 95

Next Dams: Ufm-Dubs Eroy VG87-2yrs x EX-90-2E
 x EX-90 x VG87 x VG85

Butlerview Farms



Regancrest-BH C Gerni-ET

Lot 43

43

Regancrest-BH C Gerni-ET

DOB: 03/14/2012 USA 70243009 GTPI +2181
 PTA +1523M +45F +37P 72%R 4/2013
 PTA +497NM -.04%F -.03%P
 PTA +2.4PL 2.71SCS +.2DPR 6%DCE
 PTA +3.46T +2.90UDC +3.23FLC 72%R 4/2013
CURRENTLY FLUSHING!!

SHEMA JEEVES CAMERON-ET +2274 G
 USA 66747411 100%RHA-NA TV TL TY TD
 03/18/2010
 PTA +1252M +51F +25P 75%R 4/2013
 PTA +657NM +.03%F -.05%P 100%US
 PTA +5.4PL 2.61SCS +1.6DPR 6%DCE
 PTA +3.27T +2.84UDC +3.18FLC 76%R 4/2013
 50K GTPI

GOLD-N-OAKS GALI1956-ET +1962 G
 USA 66340496 100%RHA-NA
 4-03 90 VEVEE 01/07/2009
 PTA +472M +31F +20P 81%R 4/2013
 PTA +346NM +.05%F +.02%P
 PTA +1.7PL 2.69SCS +.5DPR 7%DCE
 PTA +3.27T +2.68UDC +2.65FLC 81%R 4/2013
 AGE X DAYS MILK DCRM % FAT % PRT DCRC
 *** 2-02 2 305 26060 102 3.7 955 3.1 814 95
 365 31350 102 3.6 1127 3.2 995 95

Several sons in AI

KED OUTSIDE JEEVES-ET +1913 G
 USA 134438230 100%RHA-NA TV TL TY
 GM 12/11 05/22/2003
 PTA +1.37T +.97UDC +1.74FLC 99%R 4/2013

COURTLANE-UR CHASSITY +1951 G
 USA 64045606 100%RHA-NA
 4-09 92 EEVVE DOM 01/25/2008
 PTA +3.41T +3.57UDC +2.76FLC 83%R 4/2013
 AGE X DAYS MILK DCRM % FAT % PRT DCRC
 *** 4-02 2 305 35720 93 2.7 979 2.3 824 93
 347 39580 93 2.9 1155 2.4 932 93

BRAEDALE GOLDWYN +1944 G
 CAN 10705608 100%RHA-NA TV TL TY
 CAN 08Y GP 84 GM 12/11 01/03/2000
 PTA +3.00T +2.57UDC +2.46FLC 99%R 4/2013

GOLD-N-OAKS S MARBELLA-ET +1901 G
 USA 62213305 100%RHA-NA
 2-08 89 EVEVE GMD DOM 09/03/2005
 PTA +723M +25F +19P 91%R 4/2013
 PTA +196NM -.01%F -.01%P
 PTA +.0PL 2.84SCS -1.0DPR 7%DCE
 PTA +3.85T +2.91UDC +2.86FLC 90%R 4/2013
 AGE X DAYS MILK DCRM % FAT % PRT DCRC
 *** 2-00 2 305 26040 95 4.2 1093 3.0 779 95
 365 31580 95 4.2 1321 3.0 948 95

Next Dams: EX-94-2E x VG87 x EX-92 x VG88

Butlerview Farm



Honeycrest Bwsr Glisten
Dam of Lot 44

44

EDG Glisten Merid Grace-ET

DOB: 12/13/2012 USA 72127352 I GTPI +2198
PTA +1753M +53F +57P 71%R 4/2013
PTA +575NM -.04%F +.02%P
PTA +3.3PL 2.87SCS +.3DPR 5%DCE
PTA +2.38T +2.65UDC +1.53FLC 70%R 4/2013

SULLY HART MERIDIAN-ET +2266 G
USA 69951907 100%RHA-NA TY TD
12/11/2010
PTA +1798M +42F +53P 75%R 4/2013
PTA +535NM -.09%F +.00%P 100%US
PTA +3.0PL 2.86SCS +.5DPR 5%DCE
PTA +3.84T +3.16UDC +2.14FLC 75%R 4/2013

HONEYCREST BWSR GLISTEN-ET +2221 G
USA 69214834 99%RHA-I TY
09/19/2010
PTA +1363M +45F +52P 75%R 4/2013
PTA +617NM -.02%F +.04%P
PTA +4.8PL 2.81SCS +.6DPR 6%DCE
PTA +2.21T +2.73UDC +2.29FLC 75%R 4/2013

Sold for \$125,000 in the 2011 Legends of Fall!!

RONLEE TOYSTORY DOMAIN-ET +2022 G
USA 137974489 100%RHA-NA TV TL TY TD
3-06 90 EEVV GM 12/12 10/31/2006
PTA +2.81T +2.55UDC +2.04FLC 97%R 4/2013

SULLY PLANET MANITOBA-ET +2233 G
USA 139853931 100%RHA-NA
2-06 83 +V+++ DOM 02/16/2009
PTA +3.13T +2.37UDC +1.94FLC 80%R 4/2013
AGE X DAYS MILK DCRM % FAT % PRT DCRC
*** 2-03 2 305 29100 94 3.9 1126 3.1 896 94
365 33290 94 3.9 1306 3.1 1041 94

LAESCHWAY JET BOWSER-ET +1940 G
USA 64872951 98%RHA-I TV TL TY TD
4-05 83 VVVF 04/22/2008
PTA +1.62T +2.03UDC +1.83FLC 96%R 4/2013

HONEYCREST BOLTON GLOSS-ET +2053 G
USA 64061833 100%RHA-NA
3-04 86 VV+VV DOM 09/08/2007
PTA +1430M +78F +55P 81%R 4/2013
PTA +540NM +.09%F +.04%P
PTA +2.3PL 2.78SCS -.8DPR 8%DCE
PTA +1.25T +1.50UDC +2.17FLC 82%R 4/2013
AGE X DAYS MILK DCRM % FAT % PRT DCRC
*** 1-10 2 305 25040 95 4.0 994 3.1 778 95
365 28670 95 4.0 1139 3.1 897 95
*** 4-04 2 305 32040 94 3.9 1242 2.9 935 94
365 35630 94 3.9 1398 3.0 1073 94

Butlerview Farms



Honeycrest Bwsr Glisten
 Dam of Lot 45

45

EDG Glisten Gloria-ET

DOB: 08/08/2012 USA 71494828 GTPI +2266
 PTA +1330M +34F +49P 70%R 4/2013
 PTA +583NM -.05%F +.03%P
 PTA +5.0PL 2.83SCS +1.3DPR 5%DCE
 PTA +2.96T +2.68UDC +2.65FLC 70%R 4/2013

GENERATIONS EPIC-ET +2310 G
 CAN 11104016 100%RHA-NA TV TL TY TD
 05/26/2010
 PTA +1809M +55F +54P 76%R 4/2013
 PTA +682NM -.04%F +.00%P 100%US
 PTA +4.9PL 2.75SCS +1.5DPR 5%DCE
 PTA +2.74T +1.87UDC +2.60FLC 75%R 4/2013

HONEYCREST BWSR GLISTEN-ET +2221 G
 USA 69214834 99%RHA-I TY
 09/19/2010
 PTA +1363M +45F +52P 75%R 4/2013
 PTA +617NM -.02%F +.04%P
 PTA +4.8PL 2.81SCS +.6DPR 6%DCE
 PTA +2.21T +2.73UDC +2.29FLC 75%R 4/2013

Sold for \$125,000 in the 2011 Legends of Fall!!

CHARLESDALE SUPERSTITION-ET +2107 G
 USA 62065919 100%RHA-NA TR TV TL TY TD
 GM 12/12 12/29/2004
 PTA +1.91T +1.75UDC +1.02FLC 99%R 4/2013

TRAMILDA-N BAXTER EMILY-ET +2209 G
 USA 139232811 100%RHA-NA
 CAN 02Y VG 85 02/10/2008
 PTA +2.32T +1.73UDC +2.26FLC 77%R 4/2013
 AGE X DAYS MILK DCRM % FAT % PRT DCRC
 CAN 2-05 2 282 30946 4.2 1287 3.2 1001

LAESCHWAY JET BOWSER-ET +1940 G
 USA 64872951 98%RHA-I TV TL TY TD
 4-05 83 VVVF 04/22/2008
 PTA +1.62T +2.03UDC +1.83FLC 96%R 4/2013

HONEYCREST BOLTON GLOSS-ET +2053 G
 USA 64061833 100%RHA-NA
 3-04 86 VV+VV DOM 09/08/2007
 PTA +1430M +78F +55P 81%R 4/2013
 PTA +540NM +.09%F +.04%P
 PTA +2.3PL 2.78SCS -.8DPR 8%DCE
 PTA +1.25T +1.50UDC +2.17FLC 82%R 4/2013
 AGE X DAYS MILK DCRM % FAT % PRT DCRC
 *** 1-10 2 305 25040 95 4.0 994 3.1 778 95
 365 28670 95 4.0 1139 3.1 897 95
 *** 4-04 2 305 32040 94 3.9 1242 2.9 935 94
 365 35630 94 3.9 1398 3.0 1073 94

Butlerview Farm



Comestar Lautamie Titanic VG89-2yrs
4th Dam of Lot 46

46

EDG Lucki McCut 2151-ET

DOB: 04/04/2013 USA 72437698 GTPI +2163
PTA +702M +32F +26P 73%R 4/2013
PTA +554NM +.04%F +.02%P
PTA +5.1PL +2.70SCS +1.0DPR 5%DCE
PTA +3.12T +3.10UDC +1.89FLC 73%R 4/2013

DE-SU BKM MCCUTCHEN 1174-ET +2393 G
USA 69990138 99%RHA-I TV TL TY TD
1-11 88 VVVV 11/25/2010
PTA +1345M +67F +52P 75%R 4/2013
PTA +655NM +.07%F +.04%P 100%US
PTA +4.0PL 2.80SCS +.2DPR 5%DCE
PTA +3.82T +3.35UDC +2.91FLC 73%R 4/2013

FARNEAR-TBR-BH LUCKI-ET +2228 G
USA 69822337 100%RHA-NA
03/27/2011
PTA +1468M +47F +43P 74%R 4/2013
PTA +621NM -.02%F +.00%P
PTA +4.9PL 2.71SCS +.3DPR 7%DCE
PTA +3.09T +3.12UDC +2.02FLC 74%R 4/2013

Sold for \$88,000 in the 2011 International Intrigue!

DE-SU 521 BOOKEM-ET +2204 G
USA 66636657 99%RHA-I TR TV TL TY TD
3-08 86 VV+V 02/21/2009
PTA +2.67T +2.26UDC +1.44FLC 78%R 4/2013

SULLY SHOTTLE MAY-TW +2118 G
USA 138218285 100%RHA-NA
6-01 90 EEEEE DOM 03/27/2007
PTA +2.92T +2.56UDC +3.28FLC 85%R 4/2013
AGE X DAYS MILK DCRM % FAT % PRT DCRC
* 2-02 3 305 28300 92 3.2 897 3.2 893 83

DE-SU OBSERVER-ET +2332 G
USA 65917481 100%RHA-NA TR TV TL TY TD
4-06 90 EVEV 11/07/2008
PTA +2.70T +3.02UDC +.89FLC 91%R 4/2013

COMESTAR LAUTAMIRIA JEEVES-ET +2100 G
CAN 105752968 100%RHA-NA
2-11 86 +V+VV 03/16/2009
PTA +950M +73F +35P 78%R 4/2013
PTA +565NM +.14%F +.02%P
PTA +4.2PL 2.83SCS -.2DPR 9%DCE
PTA +2.38T +2.27UDC +1.96FLC 78%R 4/2013
AGE X DAYS MILK DCRM % FAT % PRT DCRC
*** 2-00 2 305 26050 94 4.7 1231 3.4 875 94X
365 30100 94 4.8 1438 3.4 1033 94

Next Dams: Bolton VG87-2yrs x Titanic VG89-2yrs
20* x Igniter VG88 18* x Emerson VG-2yrs x
Blackstar VG87 23*

Butlerville



*Comestar Lautamiria Jeeves VG86-2yrs
2nd Dam of Lots 47 & 48*

47

EDG Laci Uno 2082-ET

DOB: 03/03/2013 USA 72437629 GTPI +2395
PTA +2099M +71F +64P 73%R 4/2013
PTA +736NM -.00%F +.00%P
PTA +5.2PL +2.85SCS +.8DPR 7%DCE
PTA +3.29T +2.75UDC +1.77FLC 73%R 4/2013

AMIGHETTI NUMERO UNO-ET +2456 G
ITA 17990915143 100%RHA-NA TV TL TY TD
07/15/2010
PTA +992M +89F +47P 76%R 4/2013
PTA +836NM +.20%F +.06%P 100%US
PTA +6.3PL 2.59SCS +1.3DPR 6%DCE
PTA +3.08T +2.70UDC +2.21FLC 75%R 4/2013

FARNEAR-TBR-BH LACI-ET +2313 G
USA 69822336 100%RHA-NA
03/27/2011
PTA +2141M +68F +59P 74%R 4/2013
PTA +705NM -.04%F -.02%P
PTA +5.3PL 2.88SCS +.1DPR 7%DCE
PTA +3.03T +2.79UDC +1.45FLC 73%R 4/2013

Sold for \$95,000 International Intrigue 2011

LONG-LANGS OMAN OMAN-ET +2185 G
USA 135746776 100%RHA-NA TV TL TY TD
4-11 85 VVV+ GM 12/12 04/30/2004
PTA +2.17T +1.64UDC +1.96FLC 98%R 4/2013

AMIGHETTI SHOTTLE AVE-ET +2062 G
ITA 17990346074 100%RHA-NA
03/01/2006
PTA +2.84T +2.49UDC +2.40FLC 80%R 4/2013

DE-SU OBSERVER-ET +2332 G
USA 65917481 100%RHA-NA TR TV TL TY TD
4-06 90 EVEV 11/07/2008
PTA +2.70T +3.02UDC +.89FLC 91%R 4/2013

COMESTAR LAUTAMIRIA JEEVES-ET +2100 G
CAN 105752968 100%RHA-NA
2-11 86 +V+VV 03/16/2009
PTA +950M +73F +35P 78%R 4/2013
PTA +565NM +.14%F +.02%P
PTA +4.2PL 2.83SCS -.2DPR 9%DCE
PTA +2.38T +2.27UDC +1.96FLC 78%R 4/2013
AGE X DAYS MILK DCRM % FAT % PRT DCRC
*** 2-00 2 305 26050 94 4.7 1231 3.4 875 94X
365 30100 94 4.8 1438 3.4 1033 94

**Next Dams: Bolton VG87-2yrs x Titanic VG89-2yrs
20* x Igniter VG88 18* x Emerson VG-2yrs x
Blackstar VG87 23***

Butlerview Farm



*Comestar Lautamiria Jeeves VG86-2yrs
2nd Dam of Lots 47 & 48*

48

EDG Laci Layne 2123-ET

DOB: 03/23/2013 USA 72437670 GTPI +2266
PTA +1643M 52F +47P 73%R 4/2013
PTA +687NM -.03%F -.01%P
PTA +5.5PL +2.68SCS +.7DPR 5%DCE
PTA +2.47T +2.73UDC +1.93FLC 73%R 4/2013

KELLERCREST SUPER LAYNE-ET +2253 G
USA 69725085 100%RHA-NA TR TV TL TY TD
2-10 85 VVV+ 07/20/2010
PTA +1239M +26F +36P 77%R 4/2013
PTA +677NM -.07%F +.00%P 100%US
PTA +7.0PL 2.60SCS +2.0DPR 5%DCE
PTA +2.55T +2.51UDC +2.14FLC 77%R 4/2013
P9 50K GTPI

FARNEAR-TBR-BH LACI-ET +2313 G
USA 69822336 100%RHA-NA
03/27/2011
PTA +2141M +68F +59P 74%R 4/2013
PTA +705NM -.04%F -.02%P
PTA +5.3PL 2.88SCS +.1DPR 7%DCE
PTA +3.03T +2.79UDC +1.45FLC 73%R 4/2013

Sold for \$95,000 International Intrigue 2011

CHARLESDALE SUPERSTITION-ET +2107 G
USA 62065919 100%RHA-NA TR TV TL TY TD
GM 12/12 12/29/2004
PTA +1.91T +1.75UDC +1.02FLC 99%R 4/2013

KELLERCREST SHOTTLE LONI-ET +1861 G
USA 62424919 100%RHA-NA TV TL
7-04 91 EEVVEE 2E GMD DOM 09/29/2005
PTA +1.94T +1.40UDC +1.77FLC 88%R 4/2013
AGE X DAYS MILK DCRM % FAT % PRT DCRC
*** 5-02 2 305 41960 100 4.3 1795 2.9 1236 100
365 47870 100 4.2 2017 3.0 1439 100

DE-SU OBSERVER-ET +2332 G
USA 65917481 100%RHA-NA TR TV TL TY TD
4-06 90 EVEV 11/07/2008
PTA +2.70T +3.02UDC +.89FLC 91%R 4/2013

COMESTAR LAUTAMIRIA JEEVES-ET +2100 G
CAN 105752968 100%RHA-NA
2-11 86 +V+VV 03/16/2009
PTA +950M +73F +35P 78%R 4/2013
PTA +565NM +.14%F +.02%P
PTA +4.2PL 2.83SCS -.2DPR 9%DCE
PTA +2.38T +2.27UDC +1.96FLC 78%R 4/2013
AGE X DAYS MILK DCRM % FAT % PRT DCRC
*** 2-00 2 305 26050 94 4.7 1231 3.4 875 94X
365 30100 94 4.8 1438 3.4 1033 94

**Next Dams: Bolton VG87-2yrs x Titanic VG89-2yrs
20* x Igniter VG88 18* x Emerson VG-2yrs x
Blackstar VG87 23**

Butlervie



Boldi Snowman Lillico
 Dam of Lot 49

49

EDG Lillico Uno 2108-ET

DOB: 03/16/2013 USA 72437655 GTPI +2273
 PTA +1365M +73F +52P 73%R 4/2013
 PTA +709NM +.09%F +.04%P
 PTA +4.6PL +2.63SCS +.6DPR 6%DCE
 PTA +2.46T +1.98UDC +1.90FLC 73%R 4/2013
FULL SISTER TO THE #2 GTPI HEIFER ON THE MAY RUN!!

AMIGHETTI NUMERO UNO-ET +2456 G
 ITA 17990915143 100%RHA-NA TV TL TY TD
 07/15/2010
 PTA +992M +89F +47P 76%R 4/2013
 PTA +836NM +.20%F +.06%P 100%US
 PTA +6.3PL 2.59SCS +1.3DPR 6%DCE
 PTA +3.08T +2.70UDC +2.21FLC 75%R 4/2013

BOLDI SNOWMAN LILLICO-ETS +2183 G
 CAN 11151242 100%RHA-NA
 05/19/2011
 PTA +2104M +69F +72P 75%R 4/2013
 PTA +580NM -.03%F +.03%P
 PTA +2.5PL 2.88SCS -1.5DPR 6%DCE
 PTA +2.33T +1.92UDC +2.21FLC 74%R 4/2013

Big numbers of both sides of the border!
One of the oldest Snowman daughters in North America and she looks incredible!!
Full sister to Let it Snow!!

LONG-LANGS OMAN OMAN-ET +2185 G
 USA 135746776 100%RHA-NA TV TL TY TD
 4-11 85 VVV+ GM 12/12 04/30/2004
 PTA +2.17T +1.64UDC +1.96FLC 98%R 4/2013

AMIGHETTI SHOTTLE AVE-ET +2062 G
 ITA 17990346074 100%RHA-NA
 03/01/2006
 PTA +2.84T +2.49UDC +2.40FLC 80%R 4/2013

FLEVO GENETICS SNOWMAN-ET +2135 G
 NLD 388965513 100%RHA-NA TV TL
 01/14/2005
 PTA +2.13T +1.61UDC +2.52FLC 89%R 4/2013

MSCHARTROIS PLANET LEONI-ET +2067 G
 USA 66050509 100%RHA-NA
 07/07/2009
 PTA +1949M +43F +59P 80%R 4/2013
 PTA +444NM -.10%F +.00%P
 PTA +3.0PL 2.97SCS -1.3DPR 8%DCE
 PTA +2.79T +2.40UDC +1.32FLC 77%R 4/2013

**Next Dams: Shottle VG88-2yrs 4* x Lila Z EX-94 16*
 x Formations EX-94-3E 6* x Starbuck EX-94-5E 2***

Butlerview Farm



Velthuis Snowman Lorette
 Dam of Lot 50

50

EDG Lorette McCut 2142-ET

DOB: 03/30/2013 USA 72437689 GTPI +2435
 PTA +1972M +73F +58P 75%R 4/2013
 PTA +736NM +.01%F +.00%P
 PTA +5.2PL +2.66SCS -.9DPR 6%DCE
 PTA +3.77T +3.40UDC +3.10FLC 74%R 4/2013
BIG TIME TPI WITH BIG TIME TYPE!!

DE-SU BKM MCCUTCHEN 1174-ET +2393 G
 USA 69990138 99%RHA-I TV TL TY TD
 1-11 88 VVVV 11/25/2010
 PTA +1345M +67F +52P 75%R 4/2013
 PTA +655NM +.07%F +.04%P 100%US
 PTA +4.0PL 2.80SCS +.2DPR 5%DCE
 PTA +3.82T +3.35UDC +2.91FLC 73%R 4/2013

VELTHUIS SNOWMAN LORETTE-ETS +2304 G
 CAN 11294716 100%RHA-NA
 04/19/2011
 PTA +2014M +72F +66P 74%R 4/2013
 PTA +684NM -.01%F +.02%P
 PTA +4.6PL 2.75SCS -.6DPR 7%DCE
 PTA +2.78T +2.36UDC +2.08FLC 73%R 4/2013

One of the oldest Snowman's in North America!
Due in August and looks awesome!
Her Uno daughter is +2511 GTPI

DE-SU 521 BOOKEM-ET +2204 G
 USA 66636657 99%RHA-I TR TV TL TY TD
 3-08 86 VV+V 02/21/2009
 PTA +2.67T +2.26UDC +1.44FLC 78%R 4/2013

SULLY SHOTTLE MAY-TW +2118 G
 USA 138218285 100%RHA-NA
 6-01 90 EEEEE DOM 03/27/2007
 PTA +2.92T +2.56UDC +3.28FLC 85%R 4/2013
 AGE X DAYS MILK DCRM % FAT % PRT DCRC
 * 2-02 3 305 28300 92 3.2 897 3.2 893 83
 365 34110 92 3.2 1095 3.1 1066 83

FLEVO GENETICS SNOWMAN-ET +2135 G
 NLD 388965513 100%RHA-NA TV TL
 01/14/2005
 PTA +2.13T +1.61UDC +2.52FLC 89%R 4/2013

MS CHARTROISE LORELEI-ET +2168 G
 USA 66050514 VG87-2yrs CAN
 07/12/2009
 PTA +1836M +74F +69P 80%R 4/2013
 PTA +560NM +.02%F +.05%P
 PTA +2.9PL 2.95SCS -.7DPR 8%DCE
 PTA +2.55T +1.91UDC +.77FLC 76%R 4/2013
 2-01 365d 38605 1426 3.7% 1292 3.2%

Next Dams: Shottle VG88-2yrs 4* x Lila Z EX-94 16*
x Formations EX-94-3E 6* x Starbuck EX-94-5E 2*

Butlerview Farm



Aurora-Rama GChip Havily-ET
Lot 51

51

Aurora-Rama GChip Havily-ET

DOB: 02/03/2012 USA 71216168 GTPI +2273
PTA +831M +57F +27P 73%R 4/2013
PTA +696NM +.10%F +.01%P
PTA +5.2PL 2.36SCS +1.1DPR 4%DCE
PTA +2.99T +2.73UDC +2.16FLC 72%R 4/2013

#8 GTPI GOLDCHIP IN THE WORLD – HER EMBRYOS SOLD WORLDWIDE!!

MR CHASSITY GOLD CHIP-ET +2090 G
USA 140145553 100%RHA-NA TR TV TL TY TD
3-01 92 EEVE 09/04/2009
PTA +710M +37F +15P 76%R 4/2013
PTA +449NM +.04%F -.02%P 100%US
PTA +2.8PL 2.58SCS -.6DPR 3%DCE
PTA +3.87T +3.10UDC +3.13FLC 76%R 4/2013
IMP GTPI

SCREAMING VISION O HEIDA-ET +2109 G
USA 62125743 100%RHA-NA TL
4-02 88 EVVVV DOM 08/22/2005
PTA +1272M +55F +38P 82%R 4/2013
PTA +599NM +.03%F +.00%P
PTA +3.8PL 2.59SCS +1.4DPR 6%DCE
PTA +1.74T +1.85UDC +1.43FLC 81%R 4/2013
AGE X DAYS MILK DCRM % FAT % PRT DCRC
*** 1-11 3 305 27940 102 4.6 1273 3.0 842 86X
365 33450 102 4.5 1495 3.0 1012 86
*** 4-01 3 305 40820 102 4.8 1947 2.9 1192 86X
365 46750 102 4.7 2185 3.0 1393 86
LIFE 1209 113670 4.4 5055 3.1 3547

6 brothers in AI

BRAEDALE GOLDWYN +1944 G
CAN 10705608 100%RHA-NA TV TL TY
CAN 08Y GP 84 GM 12/11 01/03/2000
PTA +3.00T +2.57UDC +2.46FLC 99%R 4/2013

REGANCREST S CHASSITY-ET +2071 G
USA 62496899 100%RHA-NA TL TY
4-05 92 EEEVE GMD DOM 12/13/2005
PTA +3.44T +2.43UDC +2.38FLC 85%R 4/2013
AGE X DAYS MILK DCRM % FAT % PRT DCRC
*** 3-10 2 365 42280 93 4.3 1798 2.5 1070 93

O-BEE MANFRED JUSTICE-ET +2000 G
USA 122358313 100%RHA-NA TR TV TL TD
7-07 94 EEEE GM 12/11 03/08/1998
PTA -.07T -.35UDC +1.07FLC 99%R 4/2013

DARLAWN MARSHELL HEAVEN-ET +1703 G
USA 131435032 100%RHA-NA
3-04 86 +EVVV GMD DOM 06/19/2001
PTA +1261M +22F +30P 90%R 4/2013
PTA +217NM -.09%F -.03%P
PTA +.2PL 2.67SCS -1.1DPR 7%DCE
PTA +1.62T +1.58UDC +.58FLC 89%R 4/2013
AGE X DAYS MILK DCRM % FAT % PRT DCRC
* 2-04 2 305 31000 94 3.9 1218 3.0 942 94
365 35580 94 3.9 1374 3.1 1087 94

Butlerview Farm



Farnear Showoff Mickey-ET
Lot 52

52

Farnear Showoff Mickey-ET

DOB: 09/20/2011 USA 70639330 TY GTPI +2173
 PTA +1649M +70F +56P 72%R 4/2013
 PTA +616NM +.04%F +.02%P
 PTA +4.5PL 2.95SCS -1.2DPR 6%DCE
 PTA +2.78T +2.37UDC +1.02FLC 71%R 4/2013
DUE 2/28/13 TO ALTAOAK

LADYS-MANOR PL SHAMROCK-ET +2337 G
 USA 68977120 100%RHA-NA TR TV TL TY TD
 2-06 85 V+VV 09/11/2009
 PTA +1996M +69F +53P 76%R 4/2013
 PTA +789NM -.02%F -.03%P 100%US
 PTA +7.1PL 2.81SCS +.4DPR 4%DCE
 PTA +2.92T +2.18UDC +1.10FLC 76%R 4/2013
 50K GTPI

FARNEAR DANCING MICKEY-ET +1924 G
 USA 66840486 100%RHA-NA
 3-08 86 +V++E 06/18/2009
 PTA +646M +71F +28P 80%R 4/2013
 PTA +454NM +.18%F +.03%P
 PTA +2.8PL 2.86SCS -1.7DPR 6%DCE
 PTA +2.06T +2.09UDC +1.21FLC 80%R 4/2013
 AGE X DAYS MILK DCRM % FAT % PRT DCRC
 *** 2-00 2 305 23190 95 4.6 1069 3.5 810 95
 365 26730 95 4.7 1243 3.5 938 95

Outcross Pedigree!

ENSENADA TABOO PLANET-ET +2176 G
 USA 60597003 100%RHA-NA TR TV TL TY TD
 4-11 90 EEVV GM 12/12 03/03/2003
 PTA +1.93T +1.44UDC -.47FLC 99%R 4/2013

LADYS-MANOR RUBY D SHAWN-ET +2117 G
 USA 62360741 100%RHA-NA TY
 5-04 90 EEVVE GMD DOM 10/14/2005
 PTA +3.46T +3.02UDC +2.26FLC 88%R 4/2013
 AGE X DAYS MILK DCRM % FAT % PRT DCRC
 *** 4-04 2 305 33440 100 4.7 1561 3.1 1033 95

ENGLAND-AMMON MILLION-ET +1532 G
 USA 61547476 100%RHA-NA TR TV TL TY TD
 6-07 92 EEEE GM 4/11 04/30/2003
 PTA +1.53T +1.90UDC +1.04FLC 99%R 4/2013

FARNEAR DANCING QUEEN-ET +1929 G
 USA 61976573 100%RHA-NA
 5-02 90 EEVVE DOM 12/15/2004
 PTA +746M +46F +26P 84%R 4/2013
 PTA +430NM +.07%F +.01%P
 PTA +2.8PL 2.91SCS -.5DPR 7%DCE
 PTA +2.47T +2.26UDC +1.32FLC 83%R 4/2013
 AGE X DAYS MILK DCRM % FAT % PRT DCRC
 *** 2-10 2 305 32040 95 4.3 1393 3.2 1027 95X
 365 38030 95 4.3 1639 3.2 1224 95
 *** 5-00 2 305 31900 93 3.9 1251 3.2 1015 93
 318 32810 93 3.9 1291 3.2 1048 93

Next Dams: VG87 x VG87 x EX-2E x EX-90 x VG88

Butlerview Farms



Sandy-Valley Robust Ruby
 Dam of Lot 53 & 54

53

EDG Ruby Shot 2159

DOB: 04/08/2013 USA 72437706 GTPI +2286
 PTA +1858M +78F +54P 73%R 4/2013
 PTA +845NM +.04%F -.01%P
 PTA +7.1PL +2.56SCS +.0DPR 6%DCE
 PTA +1.67T +1.55UDC +1.50FLC 73%R 4/2013

54 **EDG Ruby Shot 2160**

DOB: 04/08/13 USA 72437707 GTPI +2271
 PTA +1441M +62F +47P 73%R 4/2013
 PTA +717NM +.04%F +.01%P
 PTA +5.7PL +2.70SCS +.9DPR 6%DCE
 PTA +2.41T +1.99UDC +2.19FLC 73%R 4/2013

BUTZ-BUTLER SHOTGLASS-ET +2333 G
 USA 70476870 100%RHA-NA TV TL TY TD
 06/01/2011
 PTA +2123M +80F +60P 74%R 4/2013
 PTA +788NM +.01%F -.01%P 100%US
 PTA +5.2PL 2.54SCS +.0DPR 7%DCE
 PTA +2.37T +1.85UDC +2.21FLC 73%R 4/2013

FLEVO GENETICS SNOWMAN-ET +2135 G
 NLD 388965513 100%RHA-NA TV TL
 01/14/2005
 PTA +2.13T +1.61UDC +2.52FLC 89%R 4/2013

GIL-GAR SHOTTLE SATIN-ET +2057 G
 USA 56295548 100%RHA-NA
 2-10 85 ++V+E 07/19/2009
 PTA +2.08T +2.42UDC +1.58FLC 76%R 4/2013
 AGE X DAYS MILK DCRM % FAT % PRT DCRC
 * 2-06 2 137 11730 3.8 448 2.8 332

SANDY-VALLEY ROBUST RUBY-ET +2412 G
 USA 69998487 100%RHA-NA
 01/28/2011
 PTA +1924M +87F +63P 73%R 4/2013
 PTA +870NM +.06%F +.02%P
 PTA +6.8PL 2.81SCS +.2DPR 5%DCE
 PTA +2.37T +2.31UDC +1.61FLC 71%R 4/2013

ROYLANE SOCRA ROBUST-ET +2245 G
 USA 64966739 100%RHA-NA TR TV TL TD
 3-03 88 VVVV 12/23/2008
 PTA +1.98T +1.96UDC +2.00FLC 76%R 4/2013

SANDY-VALLEY PLANE SAPPHIRE +2126 G
 USA 66454736 100%RHA-NA TY
 2-03 87 VV+VV 05/22/2009
 PTA +2306M +54F +57P 78%R 4/2013
 PTA +532NM -.11%F -.04%P
 PTA +4.0PL 3.00SCS -.4DPR 6%DCE
 PTA +2.63T +2.13UDC +.90FLC 76%R 4/2013
 AGE X DAYS MILK DCRM % FAT % PRT DCRC
 *** 2-00 2 305 33470 95 3.3 1111 2.8 930 95
 365 39130 95 3.3 1301 2.8 1101 95

Just fresh and looks outstanding, incredible rear udder!
Her Numero Uno dtr sold for \$58,000 US
Two daughters over +2500 GTPI
Seven daughters over +2400 GTPI

**Next Dams: Bolton EX-90 x Forbidden VG87 x
 Marshall VG89-2yrs x Rudolph VG87-2yrs x Valiant
 EX-90 x Snow-N Denises Dellia EX-95-2E**

Butlervie



Lookout Pesce Mag Sarah Red
 Dam of Lot 55

55

K-Manor Sarah Sabella-ET *RC

DOB: 10/22/2012 USA 72127293 RC GTPI +2065
 PTA +1465M +38F +42P 71%R 4/2013
 PTA +455NM -.06%F -.01%P
 PTA +2.8PL 2.74SCS -.4DPR 6%DCE
 PTA +2.67T +2.28UDC +2.52FLC 69%R 4/2013
Maternal sister sold for \$120,000 CAN

HICKORYMEA PARKER P-ET +2057 G
 USA 140909627 100%RHA-NA TR PC TV TL TD
 10/31/2010
 PTA +191M +33F +20P 75%R 4/2013
 PTA +542NM +.11%F +.05%P 100%US
 PTA +4.4PL 2.47SCS +1.0DPR 5%DCE
 PTA +2.24T +2.15UDC +2.16FLC 76%R 4/2013
 P9 3K GTPI

LOOKOUT PESCE MAG SARAH-RED-ET +2031
 CAN 107027282 100%RHA-NA
 02/09/2011
 PTA +1442M +40F +40P 68%R 4/2013
 PTA +479NM -.05%F -.01%P
 PTA +3.8PL 2.70SCS -.4DPR 7%DCE
 PTA +2.05T +1.89UDC +2.70FLC 66%R 4/2013

*Her daughters have sold to \$120,000 in the Genomic
 Giants Sale 2013!
 Just fresh and will be scored in July!*

SCHILLVIEW GARRETT-ET +2163 G
 USA 52805710 100%RHA-NA TV TL TY TD
 GM 12/12 10/14/2004
 PTA +1.76T +.97UDC +2.50FLC 98%R 4/2013

HICKORYMEA GOLDWYN OUGHT-P +1791 G
 USA 137995680 100%RHA-NA PO
 3-03 86 VV+VV 09/18/2006
 PTA +2.17T +2.23UDC +1.56FLC 79%R 4/2013
 AGE X DAYS MILK DCRM % FAT % PRT DCRC
 *** 2-01 2 305 22400 100 4.5 1000 3.2 718 100
 365 26180 100 4.5 1174 3.2 846 100

ARRON DOON WEST PORT MAGNA P +1846 G
 CAN 7823945 100%RHA-NA RC PC BY TV TL TD
 2-10 88 E+VE 02/21/2008
 PTA +1.70T +1.86UDC +1.93FLC 75%R 4/2013

CHARPENTIER MR BURNS SI-RED-ET +1797
 CAN 105180030 100%RHA-NA
 CAN 02Y VG 86 12/02/2008
 PTA +1137M# +29F# +45P# 46%R 4/2013
 PTA +.1PL# 3.08SCS# -.8DPR# 9%DCE#
 PTA +2.32T#+1.31UDC#+1.96FLC# 44%R 4/2013
 AGE X DAYS MILK DCRM % FAT % PRT DCRC
 CAN 2-05 2 305 27619 3.5 956 3.1 867
 365 32608 3.5 1153 3.2 1042

2nd Sr 3 Yr-Old, Quebec Spring Show 2003

**Next Dams: FBI VG89 x VG85-2yrs 13* x x Glen
 Drummond Splendour VG86-2yrs 36* x VG88 18* x
 EX 13* x EX-2E 7* x VG4***

Butlerview Farms



Ufm-Dubs Sheray EX-90
2nd Dam of Lot 56

56

Comyn-PBCD OS 296 109F-ET

DOB: 10/03/2011 USA 70938242 TY GTPI +2189
PTA +1247M +70F +38P 74%R 4/2013
PTA +625NM +.09%F +.00%P
PTA +4.3PL 2.64SCS -.4DPR 6%DCE
PTA +2.88T +2.62UDC +1.62FLC 72%R 4/2013
DUE 10/23/13 TO SUPERSIRE

DE-SU OSMOND-ET +2077 G
USA 65917483 100%RHA-NA TR BY TV TL TD
3-04 88 VVEV 11/09/2008
PTA +1020M +43F +35P 88%R 4/2013
PTA +616NM +.02%F +.02%P 100%US
PTA +6.3PL 2.62SCS -.8DPR 6%DCE
PTA +2.35T +2.24UDC +.81FLC 78%R 4/2013
50K GTPI

UFM-DUBS SHERAE-ET +1962 G
USA 65780200 100%RHA-NA
3-01 83 V+G++ 09/10/2009
PTA +978M +58F +30P 78%R 4/2013
PTA +483NM +.08%F +.00%P
PTA +3.6PL 2.83SCS +.4DPR 8%DCE
PTA +1.79T +1.25UDC +1.72FLC 80%R 4/2013

ENSENADA TABOO PLANET-ET +2176 G
USA 60597003 100%RHA-NA TR TV TL TY TD
4-11 90 EEVV GM 12/12 03/03/2003
PTA +1.93T +1.44UDC -.47FLC 99%R 4/2013

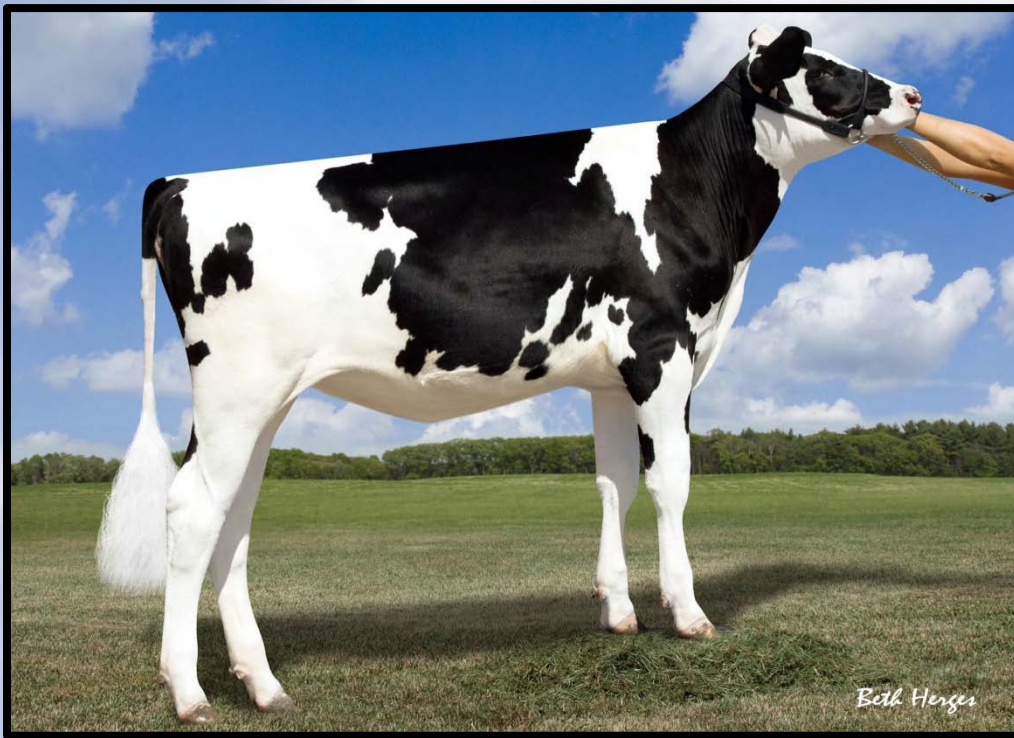
DE-SU OMAN 6121-ET +1870 G
USA 61681442 100%RHA-NA TL
2-08 86 VV+VV GMD DOM 03/02/2004
PTA +1.81T +1.83UDC +.65FLC 97%R 4/2013
AGE X DAYS MILK DCRM % FAT % PRT DCRC
*** 2-01 3 305 29850 99 4.3 1293 3.0 904 86

BRANDT-VIEW Z EARNIT CRI-ET +1814 G
USA 61089279 100%RHA-NA TV TL TY
GM 8/09 05/20/2003
PTA +.87T -.16UDC +1.07FLC 98%R 4/2013

UFM-DUBS SHERAY-ET +1948 G
USA 62658242 100%RHA-NA TL TY TD
6-05 90 EV+VE DOM 03/09/2006
PTA -16M +35F +11P 87%R 4/2013
PTA +382NM +.14%F +.04%P
PTA +2.8PL 2.82SCS +1.1DPR 7%DCE
PTA +2.70T +2.55UDC +2.03FLC 87%R 4/2013
AGE X DAYS MILK DCRM % FAT % PRT DCRC
*** 2-01 2 305 21180 93 4.2 886 3.4 720 93
365 24680 93 4.2 1048 3.5 853 93
*** 6-00 2 305 27610 94 4.4 1213 3.3 903 94
365 31760 94 4.4 1402 3.3 1057 94

Next Dams: Shottle VG87-2yrs x EX-90-2E x EX-90

Butlerview Farm



Ufm-Dubs Sherun
Dam of Lot 57

57

Butlerview Mogul Shagn-ET

DOB: 02/17/2013 USA 72127479 GTPI +2258
PTA 923+M +46F +37P 73%R 4/2013
PTA +626NM +.05%F +.04%P
PTA +4.5PL +2.79SCS +1.5DPR 5%DCE
PTA +2.94T +2.95UDC +2.85FLC 73%R 4/2013

MOUNTFIELD SSI DCY MOGUL-ET +2403 G
840003006972816 100%RHA-NA TR TV TL TY TD
06/22/2010
PTA +1449M +78F +50P 76%R 4/2013
PTA +784NM +.10%F +.03%P 100%US
PTA +4.9PL 2.66SCS +.0DPR 5%DCE
PTA +3.03T +3.19UDC +3.17FLC 76%R 4/2013
P9 50K GTPI

UFM-DUBS SHERUN-ET +2150 G
USA 68863367 100%RHA-NA
2-05 83 +++GV 11/09/2010
PTA +820M +40F +32P 76%R 4/2013
PTA +597NM +.04%F +.03%P
PTA +5.2PL 2.71SCS +1.5DPR 5%DCE
PTA +2.43T +2.19UDC +1.80FLC 77%R 4/2013

Her Man O Man sister sold for \$38,500 in the 2009 Planet Sale!

COYNE-FARMS DORCY-ET +2251 G
USA 139005002 100%RHA-NA BY TV TL
4-09 87 VVV+ 09/17/2007
PTA +2.97T +3.17UDC +2.97FLC 96%R 4/2013

MOUNTFIELD MARSH MAXINE-ET +2012 G
USA 62784081 100%RHA-NA
2-07 88 VV+VE DOM 04/23/2006
PTA +2.07T +2.24UDC +2.39FLC 86%R 4/2013
AGE X DAYS MILK DCRM % FAT % PRT DCRC
*** 2-03 2 159 14320 4.3 611 3.2 454

CHARLESDALE SUPERSTITION-ET +2107 G
USA 62065919 100%RHA-NA TR TV TL TY TD
GM 12/12 12/29/2004
PTA +1.91T +1.75UDC +1.02FLC 99%R 4/2013

UFM-DUBS SHERAY-ET +1948 G
USA 62658242 100%RHA-NA TL TY TD
6-05 90 EV+VE DOM 03/09/2006
PTA -16M +35F +11P 87%R 4/2013
PTA +382NM +.14%F +.04%P
PTA +2.8PL 2.82SCS +1.1DPR 7%DCE
PTA +2.70T +2.55UDC +2.03FLC 87%R 4/2013
AGE X DAYS MILK DCRM % FAT % PRT DCRC
*** 2-01 2 305 21180 93 4.2 886 3.4 720 93
365 24680 93 4.2 1048 3.5 853 93
*** 6-00 2 305 27610 94 4.4 1213 3.3 903 94
365 31760 94 4.4 1402 3.3 1057 94

Next Dams: Shottle VG87-2yrs x EX-90-2E x EX-90

Butlerview Farm



Vision-Gen Sh Sho A12024 VG85-2yrs
 Dam of Lot 58

58

Butlerview Meridian Sun-ET

DOB: 01/03/2013 USA 72127416 GTPI +2092
 PTA +639M +37F +22P 71%R 4/2013
 PTA +443NM +.05%F +.01%P
 PTA +3.4PL 2.82SCS +.5DPR 6%DCE
 PTA +3.44T +3.04UDC +2.80FLC 70%R 4/2013
OVER +3.00 POINTS FOR TYPE AND UDDERS!!

SULLY HART MERIDIAN-ET +2266 G
 USA 69951907 100%RHA-NA TY TD
 12/11/2010
 PTA +1798M +42F +53P 75%R 4/2013
 PTA +535NM -.09%F +.00%P 100%US
 PTA +3.0PL 2.86SCS +.5DPR 5%DCE
 PTA +3.84T +3.16UDC +2.14FLC 75%R 4/2013
 P9 3K GTPI

VISION-GEN SH SHO A12024-ET +2048 G
 USA 69517360 100%RHA-NA
 2-11 85 V+GVV 05/02/2010
 PTA +46M +35F +13P 71%R 4/2013
 PTA +399NM +.13%F +.04%P
 PTA +3.1PL 2.73SCS +.4DPR 7%DCE
 PTA +3.52T +3.23UDC +2.75FLC 71%R 4/2013

Shallow udder that's going to last a long time!
Her Numero Uno daughter is +2483 GTPI!!

RONELEE TOYSTORY DOMAIN-ET +2022 G
 USA 137974489 100%RHA-NA TV TL TY TD
 3-06 90 EEVV GM 12/12 10/31/2006
 PTA +2.81T +2.55UDC +2.04FLC 97%R 4/2013

SULLY PLANET MANITOBA-ET +2233 G
 USA 139853931 100%RHA-NA
 2-06 83 +V+++ DOM 02/16/2009
 PTA +3.13T +2.37UDC +1.94FLC 80%R 4/2013
 AGE X DAYS MILK DCRM % FAT % PRT DCRC
 *** 2-03 2 305 29100 94 3.9 1126 3.1 896 94
 365 33290 94 3.9 1306 3.1 1041 94

PICSTON SHOTTLE-ET +1975 G
 GBR 598172 100%RHA-NA TV TL TY
 GM 12/11 07/23/1999
 PTA +2.54T +1.95UDC +1.73FLC 99%R 4/2013

KY-BLUE GW DANA-ET +1886 G
 USA 139457788 100%RHA-NA
 4-06 91 EE+VE 04/02/2008
 PTA -588M +17F +5P 81%R 4/2013
 PTA +230NM +.15%F +.09%P
 PTA +1.4PL 2.81SCS +.1DPR 7%DCE
 PTA +3.62T +3.13UDC +2.84FLC 79%R 4/2013
 AGE X DAYS MILK DCRM % FAT % PRT DCRC

**Next Dams: Outside EX-92 x Chief Adeen EX-94-2E
 x Starbuck Ada EX-94**

Butlerview Farm



Lismore Observer Tiger
 Dam of Lot 59

59

EDG Tiger Tigger 2039-ET

DOB: 02/10/2013 USA 72437586 GTPI +2286
 PTA +1347M +66F +40P 71%R 4/2013
 PTA +695NM +.06%F +.00%P
 PTA +5.2PL 2.60SCS +.6DPR 5%DCE
 PTA +2.77T +2.76UDC +2.00FLC 71%R 4/2013

S-S-I DOMAIN LITHIUM-ET +2250 G
 840003004672704 100%RHA-NA TV TL TY TD
 09/25/2010
 PTA +1283M +45F +43P 75%R 4/2013
 PTA +679NM -.01%F +.02%P 100%US
 PTA +5.9PL 2.61SCS +1.5DPR 6%DCE
 PTA +2.39T +2.16UDC +2.42FLC 75%R 4/2013
 P9 50K GTPI

LISMORE OBSERVER TIGER-ET +2248 G
 USA 68729958 100%RHA-NA
 03/14/2011
 PTA +1353M +61F +42P 75%R 4/2013
 PTA +674NM +.04%F +.00%P
 PTA +4.9PL 2.52SCS +.6DPR 6%DCE
 PTA +2.70T +2.75UDC +1.15FLC 74%R 4/2013

Sells in the International Intrigue 2013!
Milking Observer with a big frame!
Has two daughters over +2400 GTPI

RONLEE TOYSTORY DOMAIN-ET +2022 G
 USA 137974489 100%RHA-NA TV TL TY TD
 3-06 90 EEVV GM 12/12 10/31/2006
 PTA +2.81T +2.55UDC +2.04FLC 97%R 4/2013

GLEN-TOCTIN BOLT LUCILLE-ET +2217 G
 USA 140018015 100%RHA-NA TY
 3-04 87 VVEVV DOM 09/07/2008
 PTA +2.83T +2.55UDC +2.61FLC 81%R 4/2013
 AGE X DAYS MILK DCRM % FAT % PRT DCRC
 *** 2-04 2 305 23580 100 4.1 966 3.2 753 100

DE-SU OBSERVER-ET +2332 G
 USA 65917481 100%RHA-NA TR TV TL TY TD
 4-06 90 EVEV 11/07/2008
 PTA +2.70T +3.02UDC +.89FLC 91%R 4/2013

LISMORE SHOTTLE 9245 +1995 G
 USA 65529536 100%RHA-NA
 4-05 90 EEVVV DOM 03/02/2008
 PTA +902M +48F +35P 80%R 4/2013
 PTA +499NM +.06%F +.03%P
 PTA +3.4PL 2.56SCS -.1DPR 8%DCE
 PTA +1.90T +1.73UDC +1.36FLC 79%R 4/2013
 AGE X DAYS MILK DCRM % FAT % PRT DCRC
 ** 1-09 3 305 23040 87 3.9 908 3.0 687 87
 365 27280 87 3.9 1067 3.0 823 87
 ** 3-11 3 305 33250 89 4.2 1396 2.9 979 89
 333 35440 89 4.2 1476 3.0 1055 89

Butlerview Farm

*Please join us for an exciting
week! Everything will be
priced. . . your opportunity to
own the best!*



Butlerview Farm