

# Canadian National Milking Shorthorn Fall Sale 2012

**Saturday, September 8th, 2012**

A remote sale featuring top consignments from breeders in  
Ontario, Manitoba and Prince Edward Island.  
Bidding open from 12 to 5 pm ET



**Valley Crest Alice 39 EX-93-4E**  
5th Mature Cow, World Dairy Expo 2008  
Her daughter by Mocha sells!



**Fieldcrest Ideal-P EX-92-4E**  
CMSS Cow of the Year 2008  
Her polled Logic daughter and  
polled Adam-P son sell!

For more information, contact:  
**Ryan Barrett - CMSS Secretary-Manager**  
Tel: (902) 439-9386 or (902) 436-7881  
Email: [milking.shorthorn@gmail.com](mailto:milking.shorthorn@gmail.com)

More photos and up to the minute sale information available online at:  
**[www.cmss.on.ca/sale2012.php](http://www.cmss.on.ca/sale2012.php)**

# Sale Details

**Bidding will be open from 12 noon to 5 pm Eastern time on September 8th, 2012.**

**Bids will be accepted by phone or text (902-439-9386)  
or by email (milking.shorthorn@gmail.com).**

Bidders who have not previously done business with the CMSS should register in advance of the sale by contacting the sale manager, Ryan Barrett, at the number or email address above. If you are planning to bid on multiple animals and have not previously done business with the Society we may ask for a letter of credit from your financial institution. If you call and you go to voice mail, please leave a message with your name, the lots you are bidding on and your bid and the sale manager will get back to you promptly.

If health tests have been performed, results will be noted. If you would like additional health tests to be performed, please contact the sale manager at least two (2) full weeks in advance of the sale date.

All consignors have the right to set a reserve price on each consignment, and bidding will start at \$50 less than the reserve price. Animals not meeting their reserve price will not sell.

All consignments will remain at their home farms until payment is received in full and transportation arrangements are made. Consignors agree to pay half of the transportation cost up to \$150. For example, if the trucking cost was \$200, the consignor and buyer would each pay \$100. However, if the trucking costs \$350, the consignor will pay \$150 and the buyer will pay \$200. It is the responsibility of the consignor and seller to work together to arrange transportation, but the sale manager will assist with coordinating trucking where multiple animals are headed to a similar area.

Multiple photos of each consignment are available by viewing the online catalogue at [www.cmss.on.ca/sale2012.php](http://www.cmss.on.ca/sale2012.php). Some consignments also have short videos.

# Lady Grove Mocha Alice 12

# Lot 1

reg. pending

Born/Né: 13 October 2011

Purity: 81.3%

Colour: Light roan

**Tested Negative for EBL (Leucosis) and Johne's Disease**

*This is an exciting opportunity to add a heifer from a high type and high components cow family by one of the most exciting bulls available right now. The first daughters of "Mocha" are showing great dairy strength and superb udders along with great final scores. Her dam, Alice 39, is a former Canadian Cow of the Year Nominee with a lifetime fat percentage of 4.9%, a whole percent over breed average. She also has an EX daughter in the Lady Grove herd and some more exciting heifers coming on! She also has sons and daughters in the UK, resulting from exported embryos. This is a cow family packed with quality...don't miss this opportunity for a heifer to build a family on!*

Consigned by Ivan & Diane Naylor, Kleefeld, MB  
Tel: (204) 433-7982 | Email: idnaylor@xplor.net.ca

Sire:

## Clarefield Mocha

Australian Illawarra sire

15 classified daughters: 2 VG 12 GP 1 G

US proof: +305M +22F +0.06% +8P -0.01% +0.2 Type

Paternal Grand Sire:

## Glenbrook Ultimate

Paternal Grand Dam:

## Worthwhile Millie EX

Dam:

## Valley Crest Alice 39 EX-93-4E

2009 Canadian Cow of the Year Nominee

5th Mature Cow, World Dairy Expo 2008

2-8 245d. 4641M 241F 5.2% 148P 3.2% BCA: 187-238-182

3-8 305d. 6351M 321F 5.0% 208P 3.3% BCA: 231-289-231

4-9 305d. 6158M 296F 4.8% 195P 3.2% BCA: 210-251-203

5-9 305d. 6488M 330F 5.1% 212P 3.3% BCA: 214-273-214

6-11 305d. 7441M 359F 4.8% 253P 3.4% BCA: 244-294-256

8-9 305d. 6234M 296F 4.7% 213P 3.4% BCA: 208-247-215

10-2 proj. 8656M 388F 4.5% 271P 3.1% BCA: 270-308-261

Lifetime: 7 lact 45,701M 2226F 4.9% 1499P 3.3% BCA: 223-271-223

Daughter: Valley Crest Alice 55 EX-92

6-2 proj. 9190M 371F 4.0% 315P 3.4% BCA: 295-297-312

Maternal Grand Sire:

## Valley Crest Monster

Maternal Grand Dam:

## Valley Crest Alice 20 EX-92

6-1 305d. 9636M 4.8% 3.3% BCA: 310-366-312

7-1 305d. 9278M 3.5% 3.2% BCA: 295-258-294

Lifetime: 7 lact. 48,290M 1941F 4.0% 1576P 3.3%

BCA: 244-244-247

All Canadian Mature Cow 1999

1st Five Year Old, RAWF 2000

3rd Dam: **Valley Crest Alice 11 VG-85**

3-2 305d 6139M 258F 4.2% 228P 3.7% BCA: 235-246-269



Dam: **Valley Crest Alice 39 EX-93-4E**

# Oceanbrae Logic Model-P

Lot 2

MSCANF9993372 Born/Né: 10 August 2011 Purity: 83.2% Colour: Red, with white  
LPI +1615 (Aug'12) - #4 PA LPI heifer in Canada EBV: +491M +30F +0.17% +13P -0.04% +8 Conf

*"Model-P" is one of the highest parent average index heifers in Canada and is polled!  
She is a maternal sister to Oceanbrae Ironman-P, currently in sampling with Semex.  
She is sired by the #2 LPI and #1 Type sire in Canada (Logic) and is out of Fieldcrest Ideal-P EX-92-4E,  
former Canadian Cow of the Year with lifetime production at almost 75,000 kgs of milk. This is a one of the  
highest indexing pedigrees every offered in the National Sale and Model-P is a sharp, dairy  
heifer in her own right, suitable for the show ring and, eventually, the bulk tank!*

Consigned by Fred Barrett, Oceanbrae Farms, Miscouche, PEI  
Tel: (902) 436-7881 | Email: mhbarrett@pei.sympatico.ca

For transport to Ontario or Quebec, trucking cost is approx \$300 or less, of which the consignor will pay half.  
For trucking costs to Western Canada or the USA, contact the consignor for an estimate.

Sire:

## GMC Rebel Logic

LPI: +1719 EBV: +133M +28F +0.39% +5P +0.02% +15 Conf  
#2 LPI sire, #1 Conformation sire in August 2012

Paternal Grand Sire:

## Pinehurst Rebel 9th

Paternal Grand Dam:

## Kingsdale Lucy 5th EX-95

Dam:

## Fieldcrest Ideal-P EX-92-4E

LPI +1511 (Aug'12) EBV: +849M +31F -0.05% +20P -0.09% +1 Conf  
2-5 305d 8510M 314F 3.7% 268P 3.1% BCA: 344-311-331 (+85 +83 +77)  
3-8 305d 9315M 334F 3.6% 292P 3.1% BCA: 317-285-304 (+50 +52 +43)  
4-9 305d 10607M 347F 3.3% 341P 3.2% BCA: 341-280-338 (+59 +30 +57)  
5-10 305d 9358M 341F 3.6% 312P 3.3% BCA: 291-269-297 (+21 +32 +23)  
6-10 305d 11145M 380F 3.4% 356P 3.2% BCA: 346-299-339 (+72 +59 +72)  
8-0 305d 10784M 409F 3.8% 262P 3.4% BCA: 341-327-351 (+35 +66 +46)  
9-6 proj. 10075M 387F 3.8% 309P 3.1% BCA: 315-305-297  
Lifetime: 7 lact 74,379M 2692F 3.6% 2426P 3.3% BCA: 328-297-322  
2010 CMSS Cow of the Year  
Dam of Oceanbrae Ironman-P at Semex

Maternal Grand Sire:

## Seagrave Thor

Maternal Grand Dam:

## Fieldcrest Ida VG-85

2-6 305d 6407M 3.7% 3.2% BCA: 261-238-255  
3-6 305D 7562M 3.6% 3.2% BCA: 273-243-271



See a video of this heifer online  
at [www.cmss.on.ca/sale2012.php](http://www.cmss.on.ca/sale2012.php)



Dam: Fieldcrest Ideal-P EX-92-4E

# Knoxdale E White Socks

Lot 3

MSCANF10842373 Born/Né: 7 June 2011 Purity: 100% Colour: Light Roan  
PA LPI +1173 (Aug'12) EBV: +349M +17F +0.05% +9P -0.02% +7 Conf

*"White Socks" comes from a deep cow family that features 5 of the next 6 dams scored Very Good and includes some previous champions at Canadian shows. Her dam was scored Very Good as a Two Year Old and was projected over 6000 kgs M in first lactation before she was sold.*

*"White Socks" is sired by Elmo, a Logic son out of former #1 LPI cow Knoxdale Elsa, who also comes from a strong cow family that traces back to a Hauxwell cow family.*

Consigned by Knoxdale Farms, Fenelon Falls, ON  
Tel: (705) 887-5711 | Email: [knoxdalefarm@hotmail.com](mailto:knoxdalefarm@hotmail.com)

Sire:

## Knoxdale Elsa's Elmo

PA LPI: +1716 EBV: +347M +29F +0.26% +13P +0.06% +10 Conf

Dam:

## Knoxdale DJ Santa's Stocking VG-85-2yr

LPI +630 (Aug'12) EBV: +350M +5F -0.16% +5P -0.10% +4 Conf  
2-5 219d. 4367M 157F 3.6% 143P 3.3%  
(sold in mid-lactation for dairy purposes)

3rd Dam: **Knoxdale Stocking GP-80**

3-11 305d 6973M 228F 3.3% 234P 3.4% BCA: 249-202-257

4th Dam: **Hauxwell White Sox 5th VG-85**

Lifetime: 6 lact 41,829M 1555F 3.7% 1264P 3.0%

5th Dam: **Hauxwell White Sox 2nd VG-85**

2-4 305d 6299M 216F 3.4% 216P 3.4% BCA: 249-209-264  
HM All Canadian Summer Yearling 1996

6th Dam: **Hauxwell White Sox VG-86**

5-3 305d 7039M 256F 3.6% 245P 3.5% BCA: 238-217-255  
All Canadian Four Year Old 1997  
HM All Canadian Mature Cow 1998

Maternal Grand Sire:

## GMC Rebel Logic

LPI: +1719 EBV: +133M +28F +0.39% +5P +0.02%  
+15 Conf #2 LPI sire, #1 Conf sire in August 2012

Paternal Grand Dam:

## Knoxdale Elsa VG-88

5 lact: 49,874M 3.8%F 3.4%P (319-300-329)

Maternal Grand Sire:

## Oceanbrae Diamond Jack

LPI +750 (Aug'12)  
EBV: +318M +8F -0.08% +5P -0.08% +3 Conf

Maternal Grand Dam:

## Knoxdale Rebel Redsox VG-87

2-6 305d 6938M 246F 3.5% 218P 3.1%  
3-6 305d 8324M 298F 3.6% 260P 3.1%  
4-7 279d 7959M 249F 3.1% 234P 2.9%  
6-10 proj 8134M 219F 2.7% 244P 3.0%



# Cedar Creek Idol Aster 15

# Lot 4

MSCANF11250329 Born/Né: 17 April 2011 Purity: 85.2% Colour: Red  
PA LPI +646 (Aug'12) EBV: +196M +7F -0.01% +3P -0.05% +5 Conf

**Bred July 2nd, 2012 to GMC Rebel Logic. Confirmed safe in calf. Due April 10th, 2013.**

*Consignor has entered her for the 2012 National Show and retains the right to exhibit her at the show and arrange transportation and transfer after the show.*

*"Aster" is sired by Oceanbrae Idol, the POD son of 2010 Cow of the Year Ideal-P. She is stylish and dairy and will hit the show ring in Lindsay in September. Her dam is a VG-88 daughter of the high index American sire "Famous" who is then backed by two more VG dams.*

Consigned by Doug Wherry and Keith Van Camp, Oshawa, ON  
Tel: (905) 728-0979 | Email: dowherr@nexicom.net

Sire:

## **Oceanbrae Idol**

PA LPI +1080 (Apr'12)

EBV: +570M +19F -0.07% +11P -0.12% +4 Conf

Maternal brother to Oceanbrae Ironman-P

Dam:

## **Cedar Creek Famous Aster 9 VG-88**

5-5 305d 6832M 244F 228P BCA: 221-199-226 (+16 +13 +22) (unofficial)

6-4 proj. 7870M 299F 235P BCA: 245-235-224 (unofficial)

3rd Dam: **Cedar Creek Aster 5C VG-85**

2-5 305d 5549M 201F 3.6% 206P 3.7% BCA: 233-208-265

Maternal Grand Sire:

## **Innisfail Prince of Diamonds**

LPI +859 (Dec'11) Rel: 71%

+225M +4F -0.08% +0P -0.13% +9 Conf

Paternal Grand Dam:

## **Fieldcrest Ideal-P EX-92-4E**

+1511 LPI (Aug'12)

EBV: +849M +31F -0.05% +20P -0.09% +1 Conf

2010 CMSS Cow of the Year

Maternal Grand Sire:

## **Vinra Bar-D Famous**

6 classified daughters: 2 VG 1 GP 3 G

US proof: +723M +22F -0.03% +24P +0.01% +0.4 Type

Maternal Grand Dam:

## **Cedar Creek Aster 5 VG-86**

3-9 288d. 6443M 220F 3.4% 211P 3.3% (235-197-238)



# Oceanbrae OLP Mila

# Lot 5

MSCANF9993343 Born/Né: 28 November 2010 Purity: 100% Colour: Red, with white  
PA LPI +440 (Aug'12) EBV: +50M +8F +0.11% +2P +0.01% +4 Conf

**Bred February 9th, 2012 to Oceanbrae Ironman-P. Due November 14th, 2012..** Checked safe in calf.

*"Mila" is backed by 5 generations of Very Good or Excellent dams, including her EX-91-5E dam who is scored 96 points for Mammary System! Her dam, Michelle 4th, has calved consistently each year producing over 60,000 kgs in 8 lactations and is still working on her eight lactation.*

*She was specifically bred to "Plato" due to Plato's high potential to transmit fat. Already, most Plato daughters are testing 0.3 to 0.5% better for fat than their dams!*

Consigned by Fred Barrett, Oceanbrae Farms, Miscouche, PEI  
Tel: (902) 436-7881 | Email: mhbarrett@pei.sympatico.ca

For transport to Ontario or Quebec, trucking cost is approx \$300 or less, of which the consignor will pay half.  
For trucking costs to Western Canada or the USA, contact the consignor for an estimate.

Sire:

## Oceanbrae Logic's Plato

LPI: +1294 (Aug'12) EBV: +92M +27F +0.40% +2P -0.01% +8 Conf  
19 classified daughters: 1 VG 10GP 8G

*See a video of this heifer online  
at [www.cmss.on.ca/sale2012.php](http://www.cmss.on.ca/sale2012.php)*

Maternal Grand Sire:

## GMC Rebel Logic

LPI: +1719 EBV: +133M +28F +0.39% +5P +0.02%  
+15 Conf #2 LPI sire, #1 Conf sire in August 2012

Paternal Grand Dam:

## Oceanbrae Pepper 2nd EX-91-3E

2009 CMSS Cow of the Year

Dam:

## Oceanbrae Michelle 4th EX-91-5E

LPI -415 (Aug'12) EBV: +7M -11F -0.19% +1P +0.02% -1 Conf  
2-3 305d 7083M 256F 3.6% 240P 3.4% BCA: 306-275-320 (+47 +50 +66)  
3-3 305d 7250M 300F 4.1% 237P 3.3% BCA: 273-278-273 (-1 +30 +5)  
4-3 305d 8940M 283F 3.2% 298P 3.3% BCA: 312-246-320 (+33 +4 +37)  
5-4 305d 8828M 284F 3.2% 292P 3.3% BCA: 298-239-301 (+27 -3 +29)  
6-4 305d 9785M 282F 2.9% 314P 3.2% BCA: 324-233-317 (+45 -6 +42)  
7-8 305d 9138M 293F 3.2% 290P 3.2% BCA: 279-225-271 (-33 -49 -39)  
8-9 proj. 9188M 308F 3.4% 285P 3.1% BCA: 282-243-269  
Lifetime: 60,230M 2006F 3.3% 1972P 3.3% BCA: 296-248-296

Maternal Grand Sire:

## Mericrest Outlaw

LPI -480 (Aug'12)  
+200M -16F -0.40% +4P -0.04% +1 Conf

Maternal Grand Dam:

## Oceanbrae Michelle 2nd EX-90-2E

5-5 305d 8251M 327F 4.0% 280P 3.4% (262-262-272)  
6-7 305d 8001M 304F 3.8% 279P 3.5% (254-244-271)  
Lifetime: 48,770M 1884M 3.9% 1631P 3.3%

3rd Dam: **Oceanbrae Doris Michelle VG-85**

4th Dam: **Oceanbrae Doris 40X VG-87**

4th Dam: **Sandy River Doris EX-90**



Dam: **Oceanbrae Michelle 4th EX-91-5E**



# Lynmark Frolic Celia

# Lot 6

MSCANF11158511 Born/Né: 5 November 2010 Purity: 86% Colour: Light Roan  
PA LPI +630 (Aug'12) EBV: +178M +8F +0.01% +10P +0.10% -3 Conf

**Bred August 16th, 2012 to Clarefield Mocha. Will be checked in calf before leaving the farm.**

*"Celia" is sired by one of the best high-purity production sires in the breed (Frolic) and comes from a deep cow family full of VG and EX cows and Star Brood Cows! Her 3rd Dam is a Five Star Brood Cow and has produced over 80,000 kgs of milk in 10 lactations. The 2nd Dam is well above breed average for both fat and protein percentage as well as being Very Good 86 points.*

Consignor's Note: Due to the drought causing hardship for many, payment terms are available on these two heifers. Please contact the consignor and sale manager prior to the sale.

Consigned by Lynmark Farms, Norwood, ON  
Tel: (705) 639-1414 | Email: lynmarkfarms@nexicom.net

Sire:

## Vinra Peerless Frolic

LPI +868 (Aug'12) EBV: +370M +18F +0.05% +15P +0.10% -4 Conf  
50 classified daughters: 0 EX 9 VG 31 GP 10 G 0 F

Paternal Grand Sire:

## Merriville Peerless

-105 LPI +515M +4F -0.27% +11P -0.07% -4 Conf  
85 classified daug: 7 EX 22 VG 40 GP 16 G

Paternal Grand Dam:

## Vinra Frost Fawn-EXP

Dam:

## Lynmark LL Cello GP-83

LPI +391 (Aug'12) EBV: -14M -3F -0.03% +4P +0.09% -1 Conf  
2-2 305d 5878M 226F 3.8% 207P 3.5% BCA: 240-226-259 (+14 +10 +25)  
3-5 proj 6779M 239F 3.5% 243P 3.6% BCA: 238-210-261

Maternal Grand Sire:

## Wildwood DG Lady's Lance

LPI +1053 (Aug'12)  
+1M +3F +0.06% +4P +0.10% +3 Conf

Maternal Grand Dam:

## Lynmark-HW Out Claire VG-86

2-3 305d 4002M 186F 4.7% 142P 3.5% (167-190-182)  
3-3 305d 6212M 241F 3.9% 216P 3.5% (224-215-240)  
4-6 305d 7624M 276F 3.6% 261P 3.4% (263-236-276)  
5-8 305d 7116M 253F 3.6% 244P 3.4% (238-211-249)  
6-8 305d 8222M 370F 4.5% 293P 3.6% (270-303-296)  
Lifetime: 5 lact. 34,430M 1384M 4.0% 1210P 3.5%

3rd Dam: **Hauxwell Clara 20th EX-90**

Five Star Brood Cow  
Lifetime Production Award Level 3 (80,000+ M)

4th Dam: **Hauxwell Clara 15th VG-85-2yr**

One Star Brood Cow



# Prinsville Logic's Fiona

# Lot 7

MSCANF11103032 Born/Né: 1 October 2010 Purity: 87% Colour: Red  
PA LPI +687 (Aug'12) EBV: -88M +5F +0.15% -4P -0.04% +9 Conf

**Bred January 26th, 2012 to Treeton Pingerly. Due in early November.**

*"Fiona" is sired by #2 LPI and #1 Type sire GMC Rebel Logic out of a VG-87 "Design."  
The 2nd Dam is classified EX-90, including EX-95 for Mammary System.  
"Fiona" is a very dairy heifer due later this fall for those needing to fill incentives later this year.*

Consigned by Prinsville Dairy Farms, Bloomfield, ON  
Tel: (613) 393-5087 | Email: daprinzen@sympatico.ca

Sire:

## **GMC Rebel Logic**

LPI: +1719 EBV: +133M +28F +0.39% +5P +0.02% +15 Conf  
#2 LPI sire, #1 Conformation sire in August 2012

Dam:

## **Prinsville Design's Fiona VG-87**

LPI -325 (Aug'12) EBV: -309M -18F -0.10% -13P -0.09% +3 Conf  
2-2 305d 6387M 214F 3.4% 192P 3.0% BCA: 278-228-256  
2nd Two Year Old, National Show 2008

Sister to Consignment: **Prinsville Jurist Fashion GP-83**

2-2 305d 6738M 244F 3.6% 217P 3.2% BCA: 283-249-278  
3-2 proj. 6856M 269F 3.9% 244P 3.6% BCA: 263-254-287

Paternal Grand Sire:

## **Pinehurst Rebel 9th**

Paternal Grand Dam:

## **Kingsdale Lucy 5th EX-95**

Maternal Grand Sire:

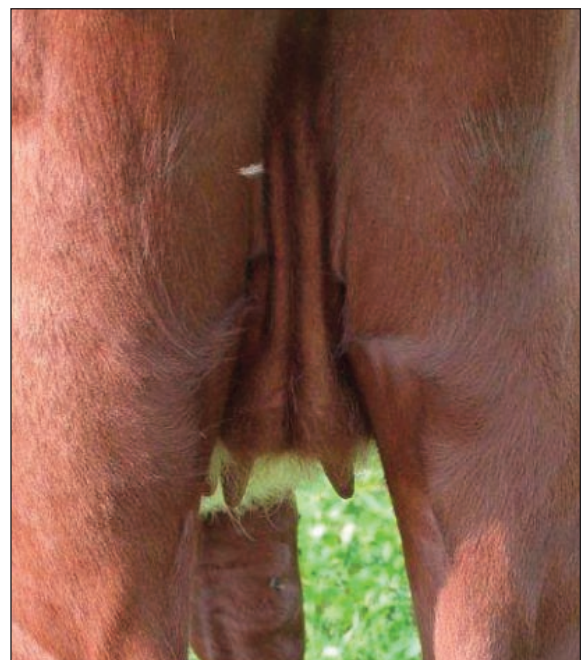
## **Glenbrook Buttercup's Design**

LPI -512 (Aug'12)  
EBV: -577M -25F -0.03% -16P +0.00% +2 Conf  
82 Classified Daughters: 4 EX 22 VG 37 GP 19 G

Maternal Grand Dam:

## **Debrae Dropstad Fashion EX-90**

2-6 305d 6841M 243F 3.5% 213P 3.1%  
BCA: 274-241-263



# Richford Fairway Penny

Lot 8

MSCANF10815040

Born/Né: 2 September 2019

Purity: 100%

Colour: Red, with white

**Bred February 6th, 2012 to Oceanbrae Ironman-P. Due November 14th, 2012**

*"Penny" will be one of the first calved daughters of the UK young sire Fairway who was heavily used as a young sire across Canada due to outcross, high purity genetics. Her dam is from the famous "Pepper" family at Oceanbrae that includes her 3rd dam, Oceanbrae Pepper 2nd EX-91-3E, the 2009 Cow of the Year. This is a correct, well-grown heifer with good production genetics in her sire stack and cow family.*

Consigned by Don Richardson, St. Marys, ON  
Tel: (519) 349-2707 | Email: karenr@quadro.net

Sire:

**Lisnamulligan Fairway**

UK Young Sire

Dam:

**Oceanbrae Jurist Peppermint GP-81**

LPI +790 (Aug'12) EBV: +277M +20F +0.13% +10P +0.04% +2 Conf  
2-1 305d 7495M 276F 3.7% 236P 3.1% BCA: 312-282-303

3rd Dam: **Oceanbrae Pepper 2nd EX-91-3E**

7-9 305 10805M 543F 5.0% 332P 3.1% (342-434-322)  
5 Lact: 47800M 2140F 4.5% 1541P 3.2% (305-340-298)  
2009 CMSS Cow of the Year  
2009 Class Leader - Mature Cows

3rd Dam: **Merrittview Ladysman Pepper VG-85**

4th Dam: **Merrittview Pepper K 5A EX-90**

Maternal Grand Sire:

**Orchardhome Lord Walton 3rd**

Maternal Grand Dam:

**Eaves Fairy 198th** (by Peerless)

Maternal Grand Sire:

**B Jurist**

+1832 LPI (Aug'12)

+416M +37F +0.33% +19P +0.15% +5 Conf

22 Classified Daughters: 2 EX 6 VG 8 GP 6 G

Maternal Grand Dam:

**Oceanbrae Salt N'Pepper GP-83**

3-9 288d. 6443M 220F 3.4% 211P 3.3%

BCA: 235-197-238

See a video of this heifer online  
at [www.cmss.on.ca/sale2012.php](http://www.cmss.on.ca/sale2012.php)



3rd Dam: **Oceanbrae Pepper 2nd EX-91-3E**

# Lyndale GSR Gidday

Lot 9

MSCANF11158501 Born/Né: 1 September 2010 Purity: 100% Colour: Red, with white  
PA LPI +235 (Aug'12) EBV: -8M -7F -0.11% -1P -0.03% +5 Conf 2nd Senior Calf, National Show 2011

**Bred May 3rd to Cate's Tangerine Perles Titan. Checked safe in calf**

*"Gidday" is a Storm Ruler daughter out of a Very Good Two Year Old from the "Molly" family, that includes the 2nd Dam, Hauxwell Miss Molly 5th, a Star Brood Cow, former All Canadian cow and strong lifetime production performer. Her dam is currently projected for over 8600 kgs of milk in 3rd lactation. Her maternal sister was 1st Sr. Calf and HM Junior Champion at the National Show in 2010.*

Consignor's Note: Due to the drought causing hardship for many, payment terms are available on these two heifers. Please contact the consignor and sale manager prior to the sale.

Consigned by Lynmark Farms and Doug Wherry, Norwood, ON  
Tel: (705) 639-1414 | Email: lynmarkfarms@nexicom.net

Sire:

## Glenbrook Storm Ruler

LPI +259 (Aug'12) EBV: -137M -7F -0.02% -4P -0.01% +6 Conf  
75 classified daughters: 4 EX 17 VG 38 GP 15 G 1 F

Dam:

## Lyndale Hello Molly VG-85-2yr

LPI +210 (Aug'12) EBV: +121M -7F -0.19% +2P -0.04% +3 Conf  
2-10 305d 6296M 213F 3.4% 217P 3.5% BCA: 242-201-255 (+34 +6 +42)  
3-10 305d 7608M 259F 3.4% 252P 3.3% BCA: 268-225-271 (+35 +8 +32)  
5-5 proj. 8638M 309F 3.6% 283P 3.3% BCA: 280-251-280  
3rd Two Year Old, National Show 2009

Paternal Grand Sire:

## Wilmington Virgins Ruler

Paternal Grand Dam:

## Glenbrook Graceful 5th EX

Maternal Grand Sire:

## Kuszmar Alfair's Othello

LPI: -333 (Aug'12) EBV: -233M -17F -0.12% -8P  
-0.03% +1 (PA) Conf  
7 classified daug: 1 EX 3 VG 3 GP

Maternal Grand Dam:

## Hauxwell Miss Molly 5th EX-91-5E

One Star Brood Cow  
Cow of the Year Nominee 2009  
All Canadian Senior Calf 1996  
10-3 305d 9598M 294F 3.1% 290P 3.0% (305-239-282)  
11-11 305d 8891M 287F 3.2% 278P 3.1% (286-235-275)  
Lifetime: 9 lact. 76,347M 2469F 3.2% 2457P 3.2%  
BCA: 264-215-259  
7 Classified Daughters: 5 VG 1 GP 1 G



# Maple Inn Rebel Lite

# Lot 10

MSCANF11027413

Born/Né: 25 March 2011

Purity: 87.5%

Colour: Red

**Bred December 21st, 2011 to Oceanbrae Diamond Jack (+711 LPI) Due September 30th, 2012**

*"Rebel Lite" is a well grown, strong topped heifer due this fall to #4 LPI sire Diamond Jack. Her maternal sister was Reserve Junior Champion at the National Show as a Senior Yearling in 2007. Her sire (Libby's Rebel) has sired numerous Champions in the United Kingdom. If you are looking for milk this fall, this heifer may be for you!*

Consigned by Mike Sullivan, Peterborough, ON  
Tel: (705) 745-0830 | Email: mapleinnfarms@gmail.com

Sire:

**Kingsdale Libby's Rebel**

LPI -342 (Aug12) EBV: -157M -11F -0.08% -4P +0.02% -1 Conf

37 Classified Daughters: 0 EX 8 VG 18 GP 12 G 0 F

Paternal Grand Sire:

**Pinehurst Rebel 9th**

Paternal Grand Dam:

**Kingsdale Elizabeth EX**

Dam:

**Cedar Creek Skylight 10 G-76**

4-5 219d 5136M 159F 3.1% 146P 2.8%

Her daughter: **Maple Inn Logic Lacy**

Reserve Junior Champion, National Show 2007

Maternal Grand Sire:

**Oceanbrae Leigh's Dynasty**

Maternal Grand Dam:

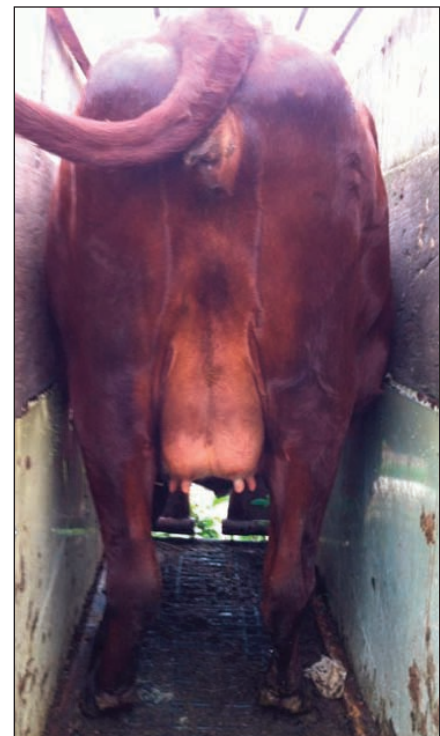
**Cedar Creek VCA Skylight 3**

3-3 305d 6166M 203F 3.3% 193P 3.1%

BCA: 236-192-227 (unofficial)

3rd Dam: **Oceanbrae Sky Light VG-85**

2-3 305d 5773M 206F 178P BCA: 248-217-235 (unofficial)



# Prinsville Ruler Fashion GP-81

Lot 11

MSCANF9945698      Born/Né: 3 July 2009      Purity: 76.2%      Colour: Red, with white  
2-3 proj at 296d 6201M 215F 3.5% 195P 3.1% BCA: 251-213-241  
Classification Breakdown: 80 Mammary, 80 Feet & Legs, 81 Dairy Strength, 86 Rump

LPI -336 (Aug'12) EBV: -86M -7F -0.06% -5P -0.07% +2 Conf

**Bred February 20th, 2012 to Mapleton Vly J Zumba. Due November 27th, 2012**

*"Fashion" is a Good Plus Two Year Old who completed a good first lactation and is due again in late November with her second calf. Her dam is an EX-90 Valley Crest Dropstad daughter who scored EX-95 for Mammary System. A maternal sister to "Fashion" is scored VG-87 as a fourth calver. Will sell dry as of the sale date.*

Consigned by Prinsville Dairy Farms, Bloomfield, ON  
Tel: (613) 393-5087 | Email: daprinzen@sympatico.ca

Sire:

## **Glenbrook Storm Ruler**

LPI +259 (Aug'12) EBV: -137M -7F -0.02% -4P -0.01% +6 Conf  
75 classified daughters: 4 EX 17 VG 38 GP 15 G 1 F

Dam:

## **Debrae Dropstad Fashion EX-90**

2-6 305d 6841M 243F 3.5% 213P 3.1% BCA: 274-241-263

Paternal Grand Sire:

## **Wilmington Virgins Ruler**

Paternal Grand Dam:

## **Glenbrook Graceful 5th EX**

Maternal Grand Sire:

## **Dropstad**

LPI: +771 (Aug'12)  
EBV: +378M +29F +0.22% +7P -0.08% -1 Conf

Maternal Grand Dam:

## **Debrae Red Fashion G-77**

3-3 305d 5860M 253F 4.3% 196P 3.3%  
BCA: 223-239-228



# Oceanbrae Islander-P

# Lot 12

MSCANF9993370 Born/Né: 10 August 2011 Purity: 80.3% Colour: Red  
LPI +725 (Aug'12) EBV: +382M +15F +0.00% +9P -0.05% -1 Conf

*"Islander-P" is a breeding age polled bull out of one of the top index cows in the country and a full brother to Ironman-P at Semex. "Islander-P" is well-grown, has great feet and legs and a quiet temperament. His dam (Ideal-P) is a three time Class Leader as well as 2010 Cow of the Year. He is sired by Adam-P, with high components and strong dairy strength traits in his US proof. "Islander-P" is potentially homozygous polled but has not been tested for polled status.*

Consigned by Fred Barrett, Oceanbrae Farms, Miscouche, PEI  
Tel: (902) 436-7881 | Email: mhbarrett@pei.sympatico.ca

For transport to Ontario or Quebec, trucking cost is approx \$300 or less, of which the consignor will pay half.  
For trucking costs to Western Canada or the USA, contact the consignor for an estimate.

Sire:

## Kulp-Gen OK Acdmy Adam-P

US proof: -593M +10F +0.20% -2P +0.10% +0.5 Type  
Canadian classified daughters: 8 GP 2 G

Paternal Grand Sire:

## Valley View OK Academy

Paternal Grand Dam:

## Rovin Derek Ali Accent-P

Dam:

## Fieldcrest Ideal-P EX-92-4E

LPI +1511 (Aug'12) EBV: +849M +31F -0.05% +20P -0.09% +1 Conf  
2-5 305d 8510M 314F 3.7% 268P 3.1% BCA: 344-311-331 (+85 +83 +77)  
3-8 305d 9315M 334F 3.6% 292P 3.1% BCA: 317-285-304 (+50 +52 +43)  
4-9 305d 10607M 347F 3.3% 341P 3.2% BCA: 341-280-338 (+59 +30 +57)  
5-10 305d 9358M 341F 3.6% 312P 3.3% BCA: 291-269-297 (+21 +32 +23)  
6-10 305d 11145M 380F 3.4% 356P 3.2% BCA: 346-299-339 (+72 +59 +72)  
8-0 305d 10784M 409F 3.8% 262P 3.4% BCA: 341-327-351 (+35 +66 +46)  
9-6 proj. 10075M 387F 3.8% 309P 3.1% BCA: 315-305-297  
Lifetime: 7 lact 74,379M 2692F 3.6% 2426P 3.3% BCA: 328-297-322  
2010 CMSS Cow of the Year  
Dam of Oceanbrae Ironman-P at Semex

Maternal Grand Sire:

## Seagrave Thor

Maternal Grand Dam:

## Fieldcrest Ida VG-85

2-6 305d 6407M 3.7% 3.2% BCA: 261-238-255  
3-6 305D 7562M 3.6% 3.2% BCA: 273-243-271



See a video of this bull online  
at [www.cmss.on.ca/sale2012.php](http://www.cmss.on.ca/sale2012.php)



Dam: Fieldcrest Ideal-P EX-92-4E

## 2 Embryos: Liriano x Logic Starshine

Lot 13

*This lot of six #1 embryos sells at a per embryo price. Embryos are exportable to the USA.*

*This cross screams show winning style! "Liriano" has had numerous daughters finish at the top of their class at recent National Shows in the United States, and his first daughters in lactation are also impressive! The dam of the embryos, Logic Starshine, was the Grand Champion at the Canadian National Show last year and recently completed a second lactation with just under 10,000 kgs in 305 days. Progeny of these embryos will be registered as 75% purity in Canada or -EXP in the USA and progeny would be eligible to show in either country.*

Consigned by: Prinsville Dairy Farms, Bloomfield, ON  
Tel: (613) 393-5087 Email: daprinzen@sympatico.ca

Sire:

### **Mysha-WO Advent Liriano**

US PTA (Aug'12): +1021M +44F +0.04% +25P -0.04% +1.0 Type  
Numerous All American nominees and winners in last two years

Paternal Grand Sire:

**KHW Kite Advent-Red**  
Red Holstein

Paternal Grand Dam:

**Mysha Lady Di EX-92**  
Grand Champion, World Dairy Expo 2005

Dam:

### **Prinsville Logic Starshine VG-89 (4-4)**

LPI +1491 (Aug'12) EBV: +387M +16F +0.01% +10P -0.01% +10 Conf

2-0 305d 8032M 249F 3.1% 264P 3.3% BCA: 304-233-307 (+71 +24 +73)  
3-11 305d 9810M 314F 3.2% 320P 3.3% BCA: 336-268-337 (+88 +50 +88)  
1st Four Year Old and Grand Champion, National Show 2011  
Junior Champion, National Show 2007  
Junior Champion, National Show 2008

Maternal Grand Sire:

**GMC Rebel Logic**  
LPI: +1719 EBV: +133M +28F +0.39% +5P +0.02%  
+15 Conf #2 LPI sire, #1 Conf sire in August 2012

Maternal Grand Dam:

**Debrae Design Star VG-87**  
4-8 305d 8054M 313F 3.9% 251P 3.1% (263-257-251)  
5 lact: 26883M 1037F 3.9% 856P 3.2% (225-222-221)

*daughter of Liriano:*



**Corstar Liriano Maize EXP VG-89**

*dam of embryos:*



**Prinsville Logic Starshine VG-89**

# Terms and Conditions

Transportation will be arranged with successful bidders after the sale, and the CMSS will help to make arrangements if necessary. Consignors will pay 50% of transportation costs for live animals up to a maximum of \$150, with buyer paying the remainder costs. For embryo consignments, the buyer agrees to pay all necessary transportation (and/or movement permits if applicable).

(a) Unless otherwise noted, every animal is sold as physically sound without noticeable blemish.

(b) Any female pregnant when sold or that has freshened within 90 days prior to the date of sale is by these facts considered a breeder. Should any female not pregnant when sold fail to conceive within six months of the sale date, or if less than 15 months old when sold by the time she reached the age of 21 months, that matter should be reported to the Seller in writing. The Seller will then have the privilege of 6 months of time in which to prove the animal a breeder before refunding full purchase price.

(c) Females bred when sold are presumed to be pregnant, but pregnancy is not guaranteed. The Seller makes no warranty that a female noted as safe in calf in the sale catalogue will deliver a live calf or that she will carry her calf to full term, nor is there any guarantee that the calf will not be mummified. Embryo transfer pregnancies as the same status as natural pregnancies

(d) The highest bidder will be the buyer. In case of dispute, the animal will again be put up for bids. If there is no further bidding, the animal will be sold to the person from whom the last bid was accepted. The consignor has the option of putting a reserve bid on a consignment. Bidding will take place as normal until 9 pm EDT. If the reserve has not yet been reached, the highest bidder will be asked if they would like to meet the reserve. If they decline, the next highest bidder will be contacted. If no bidder reaches the reserve by the end of the bidding period, the animal is not sold, and the consignor will pay a set fee for cataloguing and advertising instead of the customary commission.

(e) The consignor is responsible for submitting registration papers for transfer, and then sending the transferred paper to the new buyer upon receipt of payment.

(f) Payment is due by check to the Canadian Milking Shorthorn Society within 7 days of the sale. After payment is received, the animal is free to be transported to the new buyer. The CMSS will then pay the consignor minus commission fees. All prices are in Canadian dollars. Potential buyers who have not before done business with the CMSS should contact sale staff at least 24 hours before the sale to confirm financial arrangements.

(g) Arrangements should be made for transportation within 2 weeks between the buyer and consignor, unless both parties agree to an extension of this time frame. For animals purchased by American buyers, they are free to discuss housing options with the consignor until transportation can be arranged.